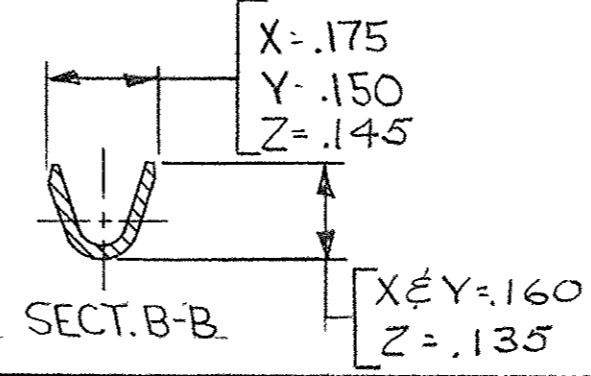
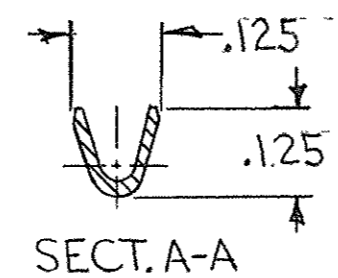
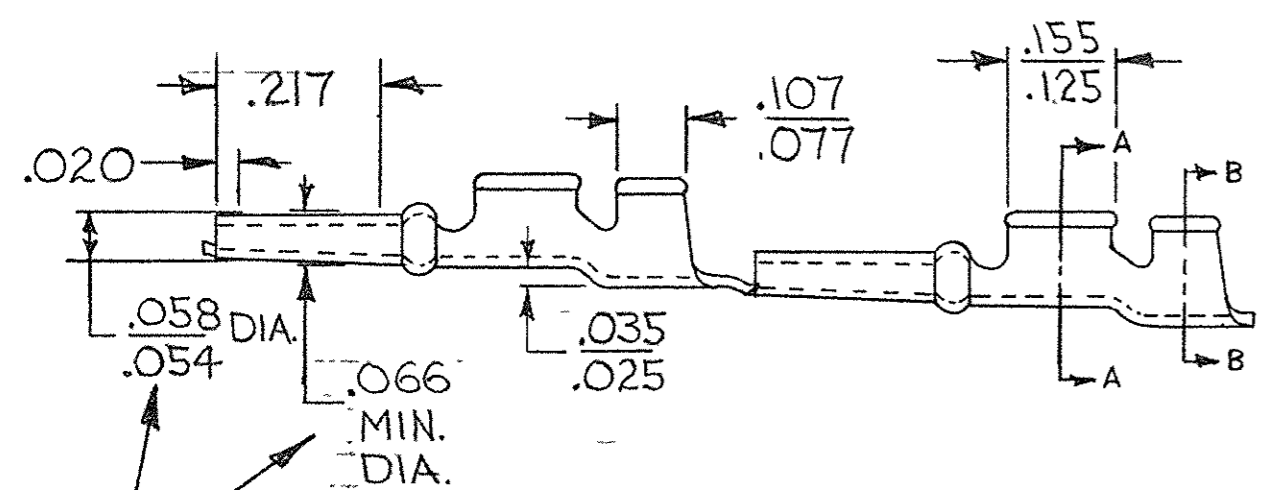
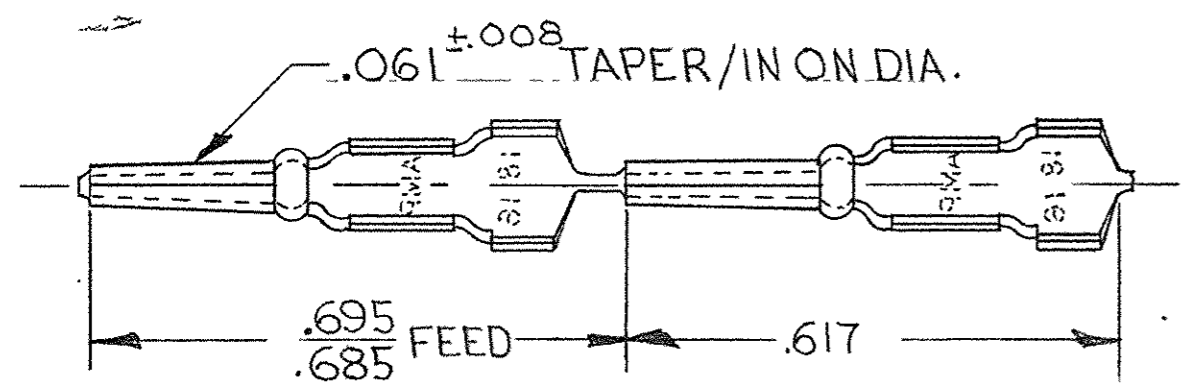


41656

© 1962 BY AMP INCORPORATED. ALL RIGHTS RESERVED. AMP PRODUCTS COVERED BY PATENTS AND/OR PATENTS PENDING. APPROVED PER GOVT CONTRACT NO.

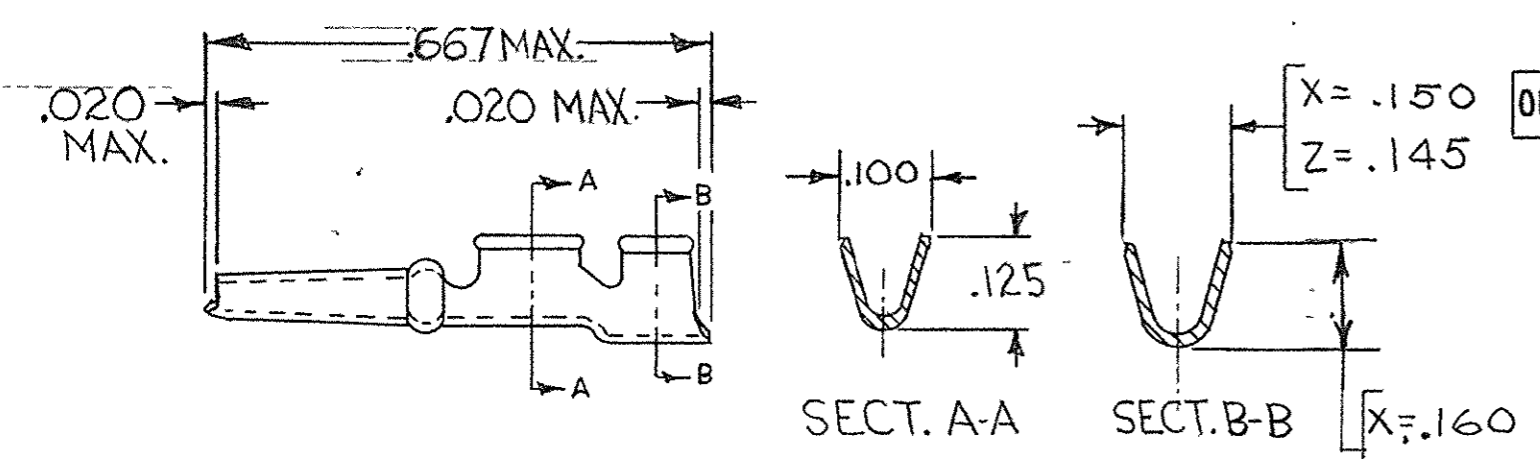
1. PART NO. 66202-1 HAS MILLED SERRATIONS.

REVISIONS				
SYM	ZONE	DESCRIPTION	DATE	APPROVAL
W		REVISED & REDRAWN T-781	8/9/63	MAM J.K.
Y		REVISED U-230	10-16-63	M.S. J.K.
Z		REVISED U-411	12-5-63	DR. J.K.
AA		REVISED W-62	3-29-65	M.S. D.S.H.
AB		REVISED 1182	1-25-67	D.R. D.H.
AC		REVISED 1179	2-10-67	M.S. D.H.
AD		OBSOLETE 41223 2102	5-12-69	DR. D.H.
AE		OBS. 60173-4, 42237-2, 60066-4(2102) 2459	4-2-70	M.S. D.H.
AF		OBSOLETE 41865 PER ECN 3343	2-4-72	J.W. D.H.
AG		PRINT DIST WAS "39" LOC WAS "AB" 9347	10-7-72	CO
AH		REVISED HAND TOOL NUMBERS	5-9-73	R.C.H.
AJ		OBS. 41675-1, 42237-3, 41658-1, 42774-1, 2, 3-4, 41223-1(60184-1) 1099	1-2-79	D.H.
AK		REVISED PLATING EA 1515	8-1-80	DS
AL		BRIGHT TIN-LEAD WAS BRIGHT TIN EA 1818	6-16-81	DS
AM		UPDATED NAME EA 2071	3-82	DS
AN		REVISED GOLD PLATING EA 2139	6-16-82	DS
AP		OBS 66202-1 & 66203-1 ECN 53379	11-19-86	R.B.
AR		REMOVED 41223 ECN 53859	2-26-87	R.B.
AS		REV PER DF-0357	4/18/88	MS
AT		OBS 41674 PER DF-3970	8-11	MS
AU		REV PER OH14-0139-05	1-25-06	PY RG

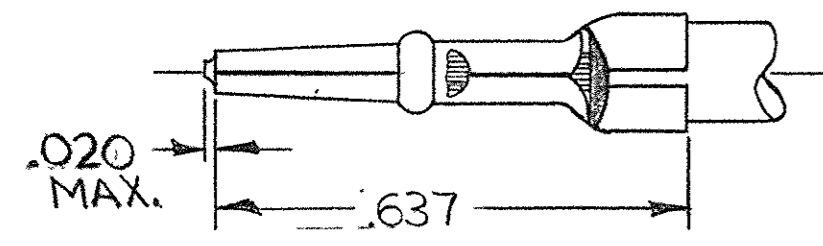


OUT OF ROUND NOT TO EXCEED TOLERANCE ON DIMENSIONS.

STRIP



LOOSE PIECE



MAX. INSTALLED EXTENSION

CRIMPED VERSION

LOOSE PIECE No.	WIRE SIZE	INSUL SIZE	INSUL CODE	FINISH	INSERT TOOL	HAND TOOL	C.H.
60066-6	60173-6	18-16	.070-.100	Z	.00005 GOLD OVER .00005 NICKEL	380306-3	90198 .058
41658-1	41675-1	18-16	.100-.140	X	.00005 GOLD OVER .00005 NICKEL	380306-3	90007 .058
60066-5	60173-5		.070-.100	Z	PLAIN		90198
60066-4	60173-4			Z	.0001 GOLD OVER .0001 SILVER		
60066-3	60173-3			Z	.00003 GOLD OVER .00005 NICKEL		90198
60066-2	60173-2			Z	.0002 SILVER		90198
60066-1	60173-1		.070-100	Z	.0001 BRIGHT TIN-LEAD		90198
OBS 66202-1	66203-1		.100-.140	X	.0001 BRIGHT TIN-LEAD		90007
42774-4	#			Y	PLAIN		47044
	42237-2			X	PLAIN		
60184-1	42237-3			X	.0002 GOLD OVER .00005 NICKEL		90007
42774-3	#			Y	.00003 GOLD OVER .00005 NICKEL		47044
42774-2	#			Y	.0002 SILVER		47044
42774-1	#			Y	.0001 BRIGHT TIN-LEAD		47044
41865	42237-1			X	.0001 GOLD OVER .0001 SILVER		
41658	41675			X	.00003 GOLD OVER .00005 NICKEL		90007
41657	41674			X	.0002 SILVER		90007
5-41656-0		18-16	.100-.140	X	.0001 MATTE TIN	380306-3	90007 .058
41656	41673	18-16	.100-.140	X	.0001 BRIGHT TIN-LEAD	380306-3	90007 .058

LOC	PRINT	QTY REQD	NOMENCLATURE OR DESCRIPTION	PART OR IDENTIFYING NO
5/300	DF			

LIST OF MATERIALS OR PARTS LIST

UNLESS OTHERWISE SPECIFIED DIMENSIONS ARE IN INCHES TOLERANCES ON FRACTIONS DECIMALS ANGLES ± # ±.010 ± #	SIGNATURE	DATE	AMP INCORPORATED HARRISBURG, PENNSYLVANIA
MATERIAL	DR. M.A. Mahly	8/9/63	
HEAT TREAT	CHK J. Kaufman	8/19/63	PIN, TAPER, INSULATION SUPPORT, "53" SERIES
FINISH	DSGN ENGR K. Kallweit	8/14/63	
SEE TABLE	APPD J. Wenzel	8/14/63	CODE IDENT NO 00779
	DSGN APPD		SIZE C
	OTHER APPD		NUMBER 41656
			SCALE 4-1
			WT CALC ACTUAL SHEET

CUSTOMER DRAWING 1