

4

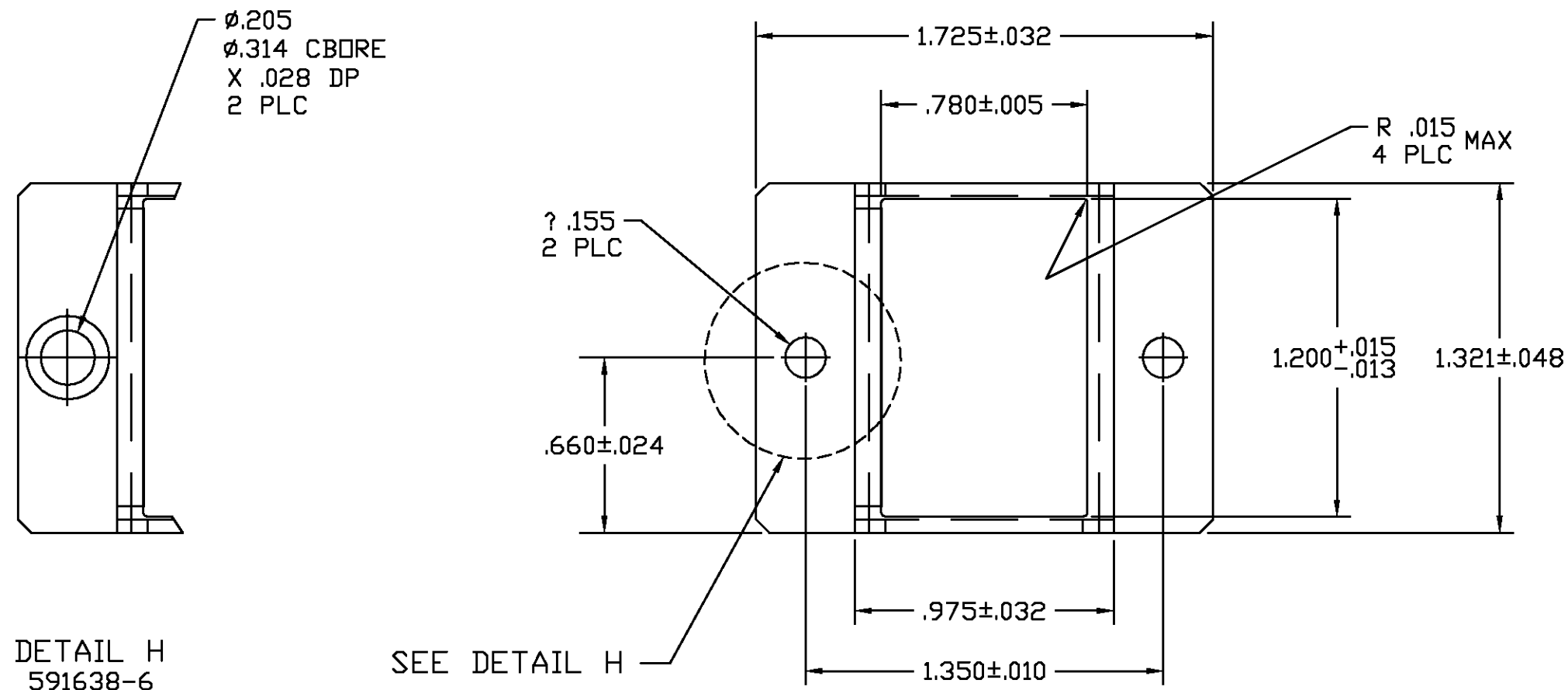
3

2

1

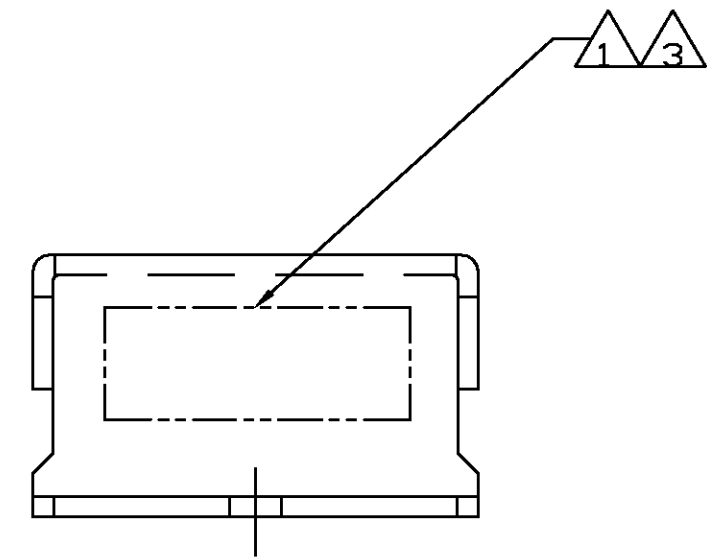
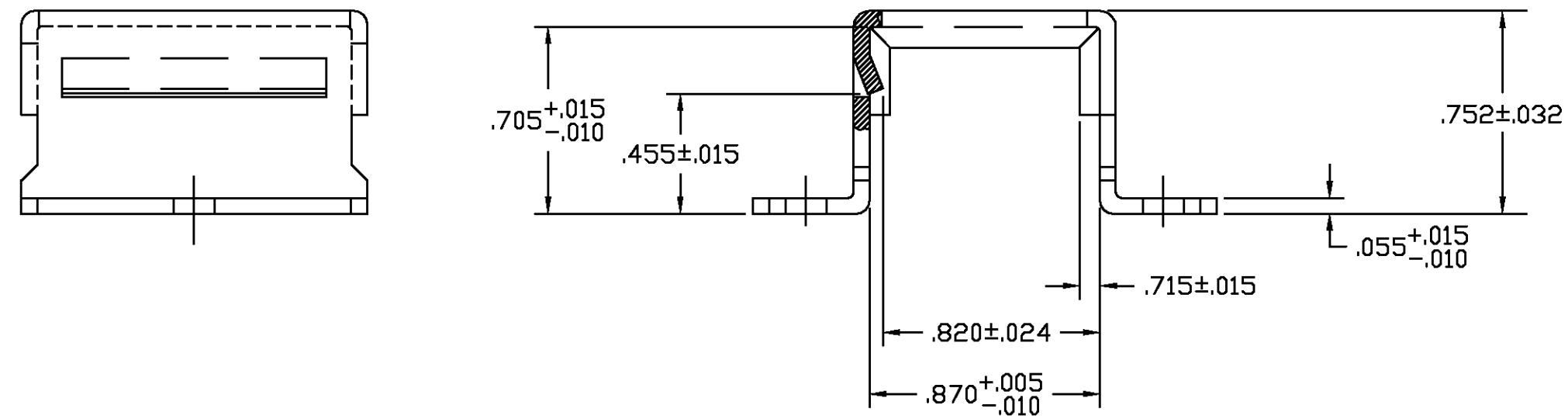
THIS DRAWING IS UNPUBLISHED. RELEASED FOR PUBLICATION .19  
 © COPYRIGHT 19 BY AMP INCORPORATED, ALL RIGHTS RESERVED.

| LOC | DIST | REVISIONS |     |                      |      |     |      |
|-----|------|-----------|-----|----------------------|------|-----|------|
| DF  | A0   | P         | LTR | DESCRIPTION          | DATE | DWN | APVD |
|     |      | C         |     | REV PER 0600-8021-98 | 6-99 | CT  | DM   |



DETAIL H  
591638-6

SEE DETAIL H



- 1 MARK "AMP", AMP PART NO. AND DATE CODE .060 MINIMUM HIGH CHARACTERS AT APPROXIMATE AREA SHOWN.
- 2. THIS FRAME ASSEMBLY ACCOMMODATES SINGLE SIZE 12 FEED-BACK MODULE OR THREE MODULES OF SIZES 16, 20 AND 22.
- 3 MARK CUSTOMER PART NO. IF REQUIRED .060 MINIMUM HIGH CHARACTERS AT APPROXIMATE AREA SHOWN.

| DESCRIPTION             | FINISH   | CUSTOMER NO.  | PART NO. |
|-------------------------|--|---------------|----------|
| MTG. HOLES PER DETAIL H | ELECTROLESS NICKEL PER QQ-N-290                |               | 591638-6 |
|                         | BLACK ANODIZED PER MIL-A-8625 TYPE II, CLASS 2 | 8400-052-0000 | 591638-5 |
|                         | BLACK ANODIZED PER MIL-A-8625 TYPE II, CLASS 2 | G383962-2     | 591638-4 |
|                         | BLACK ANODIZED PER MIL-A-8625 TYPE II, CLASS 2 |               | 591638-1 |

|                                       |  |                                  |  |                                       |
|---------------------------------------|--|----------------------------------|--|---------------------------------------|
| THIS DRAWING IS A CONTROLLED DOCUMENT |  | DWN<br>C. C. THOMAS<br>17 JUN 99 | AMP Incorporated<br>Harrisburg PA 17105-3608 |                                       |
| DI MENSIONS:<br>INCHES                | TOLERANCES UNLESS OTHERWISE SPECIFIED: | CHK<br>D. MILLER<br>6-17-99      | APVD<br>D. MILLER<br>6-17-99                 | NAME<br>BRACKET, GROUNDING MODULE, TJ |
|                                       | 0 PLC ± -                              |                                  |  | SIZE<br>A2                            |
|                                       | 1 PLC ± -                              |                                  |  | CAGE CODE<br>00779                    |
|                                       | 2 PLC ± .01                            |                                  |  | DRAWING NO<br>C=591638                |
|                                       | 3 PLC ± .005                           |                                  |  | RESTRICTED TO                         |
|                                       | 4 PLC ± -                              |                                  |  |                                       |
| MATERIAL                              | FINISH                                 | WEIGHT                           | SCALE<br>2:1                                 | SHEET<br>1 OF 1                       |
|                                       |  |                                  | REV<br>C                                     |                                       |

591638  
B