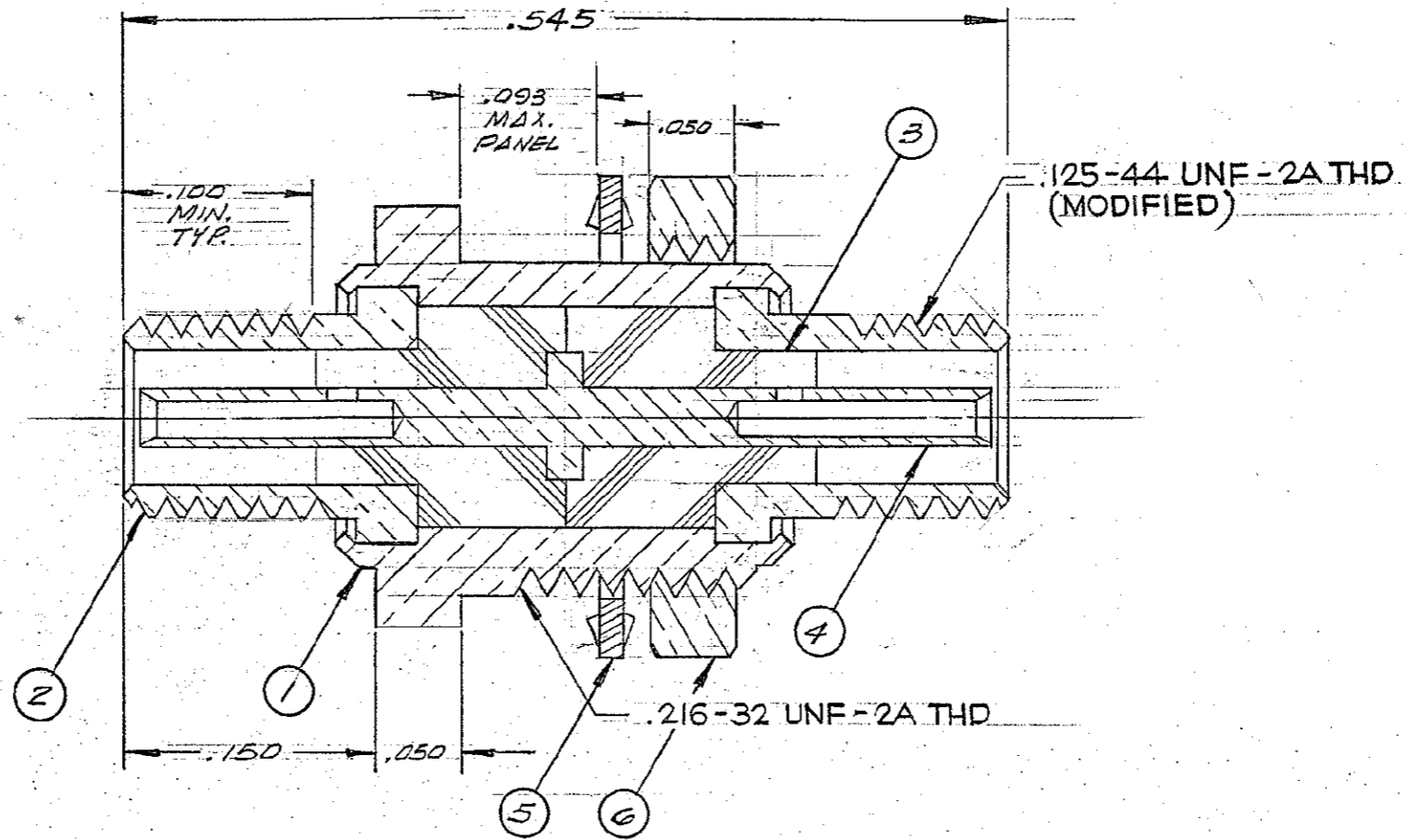
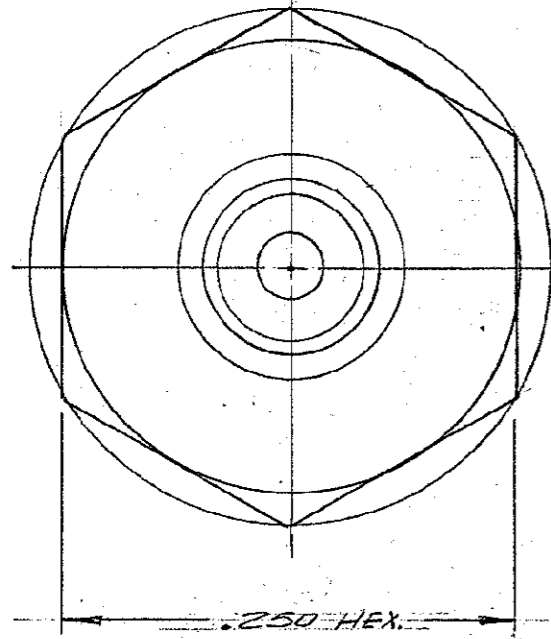


CDDE 143-0005-0001 C

These drawings and specifications are the property of Microdot Inc., are issued in strict confidence and shall not be divulged, be reproduced or copied, or used as the basis for the manufacture or sale of any article without written permission of Microdot Inc.



QTY	PART NUMBER	NOMENCLATURE	MAT'L & SPEC.	FINISH	ITEM
1	014-0062-0002	NUT	BRASS, PER QQ-B-626	2	6
1	014-0063-0002	LOCK WASHER	#425 BRONZE ALLOY	2	5
1	014-0061-0002	CONTACT	COPPER ALLOY	2	4
2	014-0060-0001	INSULATOR	TEFLON, L-P-403		3
2	014-0059-0002	ADAPTER	BRASS, PER QQ-B-626	2	2
1	014-0058-0002	HOUSING	BRASS, PER QQ-B-626	2	1

3. ELECTRICAL REQUIREMENTS:

TEST VOLTAGE 450 V.R.M.S.
INSULATION RESISTANCE: 10⁹ MEG OHMS MIN.

2. GOLD PLATE PER MIL-G-45204, TYPE II, CLASS 1.

1. THIS CONNECTOR MATES WITH ALL LEPRA/CON 142 SCREEN-ON-SERIES PLUGS.

NOTES: UNLESS OTHERWISE SPECIFIED

CX2043

STANDARD TOLERANCES UNLESS OTHERWISE SPECIFIED
DEC. ± .010
FRAC. ± _____
ANGLES ± _____
ECCENTRICITY _____
MAX. T.I.R. _____
HOLE DIA. ± _____
SURFACE ROUGHNESS _____
MICRO INCHES _____
THREADS TO MIL-S-7742
COMMERCIAL TOLERANCES APPLY TO STOCK DIMENSIONS

MALCO
A MICRODOT COMPANY, INC.
220 PASADENA AVE., SO. PASADENA, CAL

SURFACE TREATMENT NOTED

MATERIAL NOTED

APP. 6/22/67

CHECKED BY

DRAWN BY E. JANSEN

SCALE 10X

WT DATE 9/17/67

LEPRA/CON FEED THRU ADAPTER

PROD CODE 946
CODE CDM
DRAWING NUMBER 143-0005-0001 C

ASSEMBLY	NO REQ'D	LET	ECO	REVISION DESCRIPTION	BY	DATE	APP
		C	405%	UPDATE REVISION LETTER	ES	9/29/67	ES
		B	2895%	ITEM 5 MAT'L WAS: P/BRZE QQ-B-750	LM	11/9/67	ES
		A	45%	RELEASED FOR PRODUCTION	EJ	6/22/67	ES