

Type CB10 Series

Type CB10 Series



Low price, versatility and stable environmental characteristics are important benefits of this product. Featuring an innovative carbon resistive element printed on film in a fully enclosed package, this potentiometer style is normally chosen for a wide range of applications in industrial, professional and consumer equipment.

Key Features

- Low Cost
- Robust Enclosed Construction
- Spindle Adjust Versions
- Flame Retardant
- Arrow Position Indicator
- Top, Bottom and Side Adjust Styles
- Stable in High Humidity
- Edgewise Operation Style

Characteristics - Electrical

| | |
|---------------------------------|--|
| Resistance Range: | 100R to 10M Linear , 1K to 1M Non-Linear |
| Resistance Values: | 1, 2.2 & 4.7 in each decade |
| Resistance Tolerance: | ± 20% (± 30% above 1 Megohms) |
| End Resistance: | < 3% |
| Power Rating @ 40°C: | 0.15 Watts (derating to zero at 70°C) |
| Maximum Voltage: | Lin. 200V DC / Log. 150V DC |
| Rotational Noise (CRV): | <5% of Rn nominal |
| Temperature Coefficient: | ±500 ppm/°C (< 100K ohms) |
| Slider Current: | 50mA |
| Resolution: | Essentially Infinite |
| Electrical Adjustment: | 240° Nominal 1 Turn |

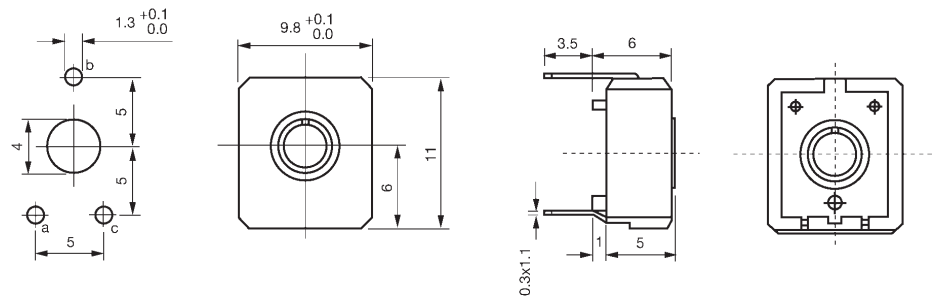
Characteristics - Mechanical

| | |
|-------------------------------|----------------|
| End Torque: | 50 mNm maximum |
| Starting Torque: | 4 to 20 mNm |
| Mechanical Adjustment: | 295° nominal |
| Weight: | 0.8 grams |

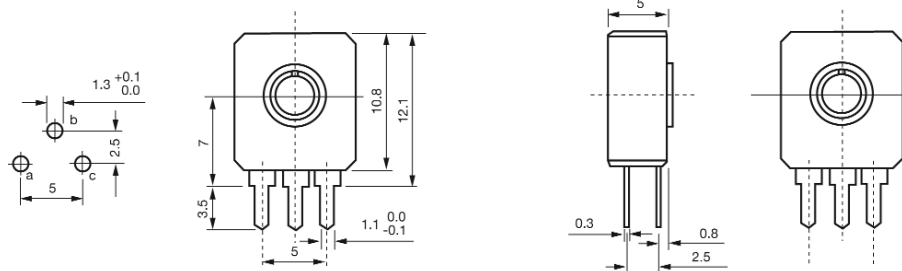
Characteristics - Environmental

| | |
|-----------------------------|--|
| Temperature Range: | -25°C to +70°C |
| Temperature Storage: | 1000 hours at 100°C |
| Rotational Life: | 500 cycles, minimum (10000 cycles-extended life versions) |
| Load Life at 40°C: | ΔR <10% after 1000 hours |
| Sealing: | Dust and Splash Proof |
| Climate Category: | 25/70/21 |

Dimensions CB10V

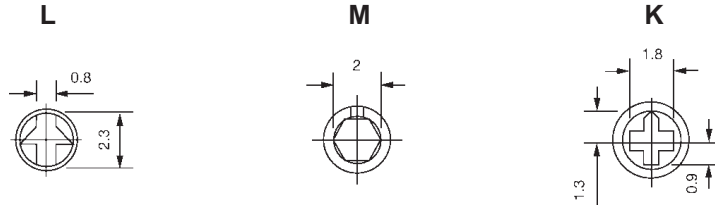


CB10H

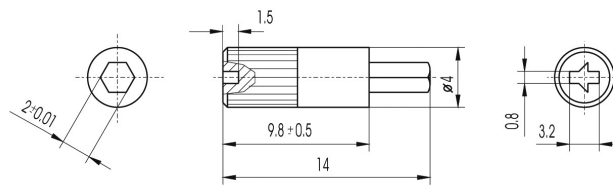


Type CB10 Series

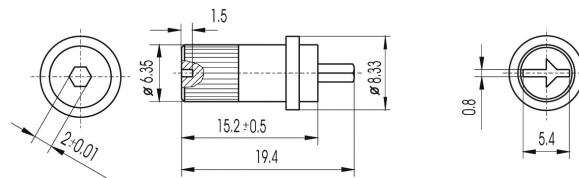
Adjustment Styles



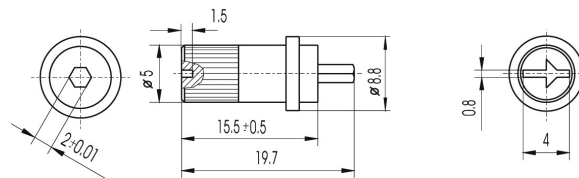
Plug-In Spindles / Edgewheels



| Colour | Part Number |
|--------|-------------|
| White | CB101161 |
| Black | CB101387 |
| Red | CB101490 |
| Blue | CB101598 |



| Colour | Part Number |
|--------|-------------|
| White | CB101446 |
| Black | CB101489 |
| Red | CB101502 |



| Colour | Part Number |
|--------|-------------|
| White | CB101544 |
| Black | CB101589 |
| Red | CB101776 |

How to Order

| Common Part | Adjustment Style | Orientation | Resistance Value | Tolerance | Features |
|----------------------------|--|--|--|--|----------------------------------|
| CB10 - 10mm Carbon Trimmer | L - Arrow Head M - Hex Centre K - Cross Slot | H - Vertical to PCB V - Horizontal to PCB | The first two digits are significant figures of resistance value and the third denotes the number of zeros following. e.g. 100R: 101 1K0: 102 10K: 103 100K: 104 | K - 10% (Special) M - 20% N - 30% (<1 Meg) | -- Standard E - Extended Life |