

Type CB15 Series



Low price, versatility and stable environmental characteristics are important benefits of this product. Featuring an innovative carbon resistive element printed on film in a fully enclosed package, this potentiometer style is normally chosen for a wide range of applications in industrial, professional and consumer equipment.

Key Features

- Low Cost
- Robust Enclosed Construction
- Spindle Adjust Versions
- Flame Retardant
- Arrow Position Indicator
- Top, Bottom and Side Adjust Styles
- Stable in High Humidity
- Edgewheel Operation Style

Characteristics - Electrical

Resistance Range:	100R to 4M7 Linear, 1K to 2M2 Non-Linear
Resistance Values:	1, 2.2 & 4.7 in each decade
Resistance Tolerance:	± 20% (± 30% above 1 Megohms)
Power Rating @ 40°C:	0.25 Watt Linear, 0.15 Watt Non Linear
Maximum Voltage:	300V DC Linear, 200V DC Non Linear
Rotational Noise (CRV):	<5% of Rn nominal
Temperature Coefficient:	<100 KΩ±500ppm; ≥100 KΩ±1000ppm
Resolution:	Essentially Infinite
Electrical Adjustment:	240° ±20°

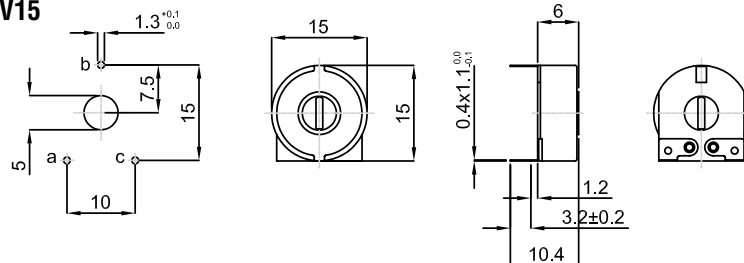
Characteristics - Mechanical

End Torque:	100 mNm minimum
Starting Torque:	4 to 25 mNm
Mechanical Adjustment:	280° ±5°
Weight:	1.5 grams

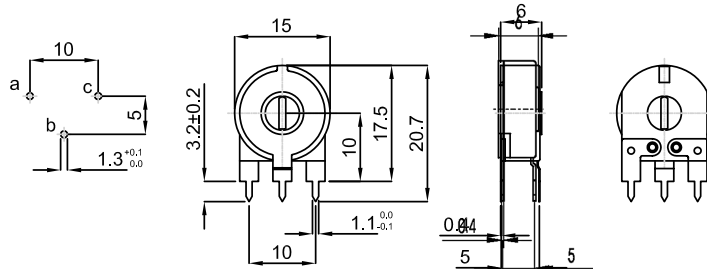
Characteristics - Environmental

Temperature Range:	-25°C to +70°C
Rotational Life:	10,000 cycles
Load Life at 40°C:	ΔR <10% after 1000 hours
Sealing:	Dust and Splash Proof
Climate Category:	IEC 293-1 Category 25/70/21

Dimensions CB15 - V15



CB15 - H5



Dimensions CB15 - V12

