

KSR2D Series Subminiature Detect Switch for SMT

Features/Benefits

- Saves PCB space
- G terminations
- Soft actuator
- RoHS compliant and compatible

Typical Applications

- Automotive
- Cellular phones & accessories
- Industrial electronics
- Computers & network equipment



Specification

FUNCTION: momentary action
CONTACT ARRANGEMENT: N.O.
TERMINALS: Gullwing type for SMT

Mechanical

Type	Operating force Newtons (grams)	Operating life (operations)	Travel
KSR2D3G	1,5 ± 0,5N	100,000	0,3 ± 0,15

Packaging

Switches are delivered on continuous tape, in reels of 2,500 pieces.

NOTE: Part numbers listed above do not represent all possible configurations.

For information on specific and custom switches, consult Customer Service Center.

Electrical

MAXIMUM POWER: 0.2 VA
MAXIMUM VOLTAGE: 32 VDC
MINIMUM VOLTAGE: 20 mV
MAXIMUM CURRENT DC: 10 mA
MINIMUM CURRENT DC: 1 mA

CONTACT RESISTANCE: 100 mΩ
INSULATION RESISTANCE (100 V): 10⁹ Ω
BOUNCE TIME: 1 ms

Environmental

OPERATING TEMPERATURE: -40°C to 125°C
STORAGE TEMPERATURE: -55°C to 125°C

Process

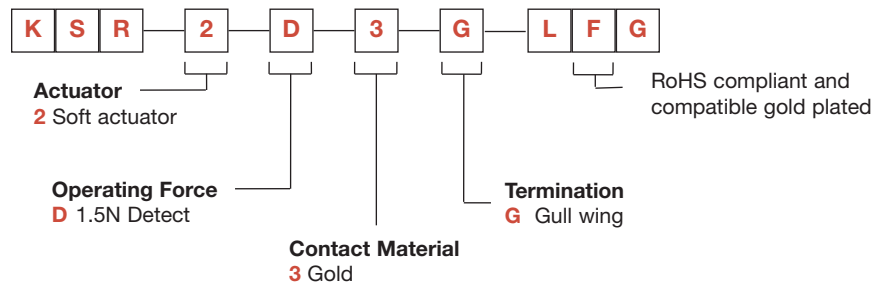
SOLDERING: Infrared reflow according to lead free soldering process

How To Order

Our easy build-a-switch concept allows you to mix and match options to create the switch you need. To order, select desired option from each category and place it in the appropriate box.

However, please note that all the combinations of these options are not feasible.

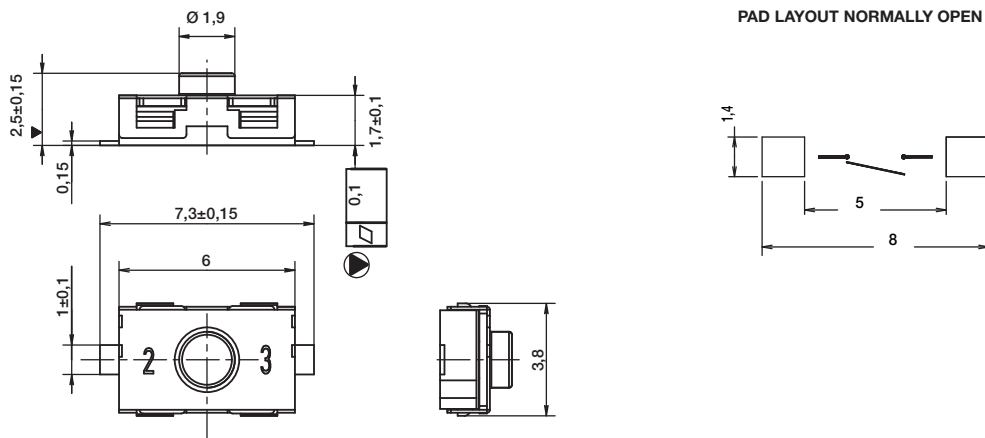
For any part number different from those listed above, please consult your local representative.



F

KSR2D

Detect



Dimensions are shown: mm
Specifications and dimensions subject to change