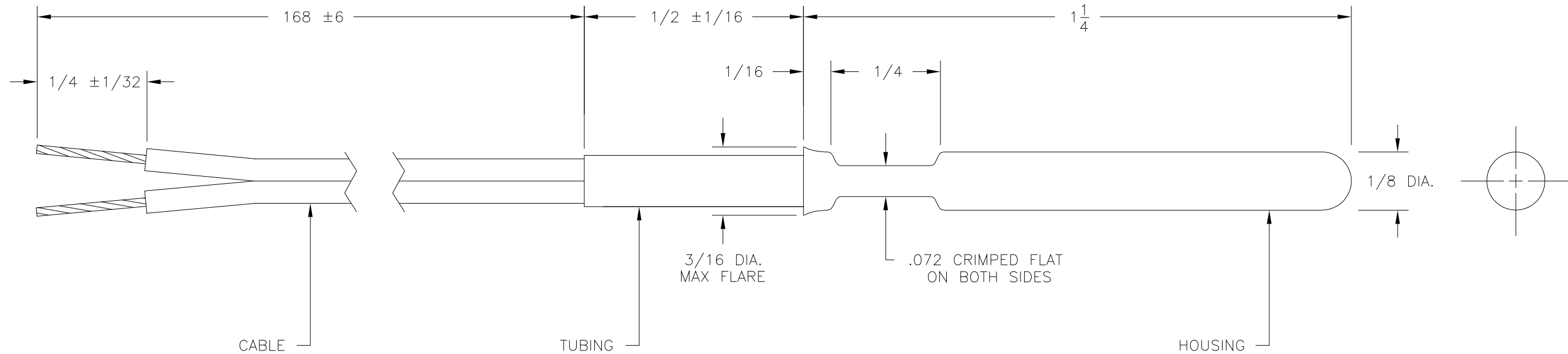
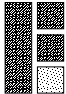


REV.	CHANGE	DATE	APPD.
A	RTE SHT REV PER ECO 9122	11.8.95	DL
B	168 WAS 150 - ECO 10320	8.26.96	MFP
C	RTE SHT REV PER ECO 12290	2.5.98	MD
D	INCREASED 900-312TU1-A09 TUBING FROM 1-1/2 TO 1-9/16 ECO 13901	11.30.99	



CABLE	26 AWG, 7-34 STRANDED, SILVER PLATED COPPER, TEFLON INSULATION, COLOR: WHITE
TUBING	TEFLON COLOR: NATURAL
HOUSING	304 STAINLESS STEEL
RESISTANCE	100K OHMS ±3°F AT 77°F
R-T CURVE	100K OHM ISO-CURVE ±3°F FROM 50°F TO 500°F
INSULATION RESISTANCE	1000 MEGOHMS MINIMUM AT 200 ±20 VDC

TOLERANCES UNLESS OTHERWISE NOTED, ALL DIMENSIONS ARE IN INCHES, AND TOLERANCES ARE AS SHOWN HERE. FRACTIONS = ±1/64 DECIMALS .XX = .01 .XXX = .005 ANGLES = 0°30'		DRAWN HS CHECKED MFP APPROVED SRP	DATE 17DEC93 DATE 12.20.93 DATE 12.21.93	 FENWAL ELECTRONICS 450 Fortune Boulevard, Milford, MA 01757-1745 (508) 478-6000 / FAX (508) 473-6035
USED ON ECO 6440		TITLE PROBE ASSEMBLY OUTLINE		
SHEET 1		OF 1	DO NOT SCALE DRAWING	
SCALE 4:1		SIZE B	DRAWING NUMBER 528-59AR12-104	
				REV. D

This information is the property of FENWAL ELECTRONICS. It is submitted in confidence, and is not to be disclosed or utilized without written permission.