

C&K DM Series Miniature Illuminated Power Rocker Switches



Features/Benefits

- 3 AMPS to 10 AMPS
- Illuminated LED
- Positive detent
- Recessed bracket available—prevents accidental actuation

Typical Applications

- Instrumentation
- Industrial
- Copy machines



Specifications

CONTACT RATING: DM14 and DM24 Models: 3 AMPS @ 125 V AC; 2 AMPS @ 250 V AC. DM54 and DM64 Models: 10 AMPS @ 125 V AC; 5 AMPS @ 250 V AC (UL/CSA).

ELECTRICAL LIFE: 10,000 make-and-break cycles at full load.

INSULATION RESISTANCE: $10^9 \Omega$ min.

DIELECTRIC STRENGTH: 1,000 Vrms min. @ sea level.

NOTE: Specification and materials listed above are for standard switches. For information on specific and custom switches, consult Customer Service Center.

Materials

HOUSING: 6/6 nylon (UL94V-2), black.

ACTUATOR: 6/6 nylon (UL94V-2), black.

MOVABLE CONTACTS: DM14 and DM24 Models: Copper, silver plated. DM54 and DM64 Models: Coin silver, silver plated.

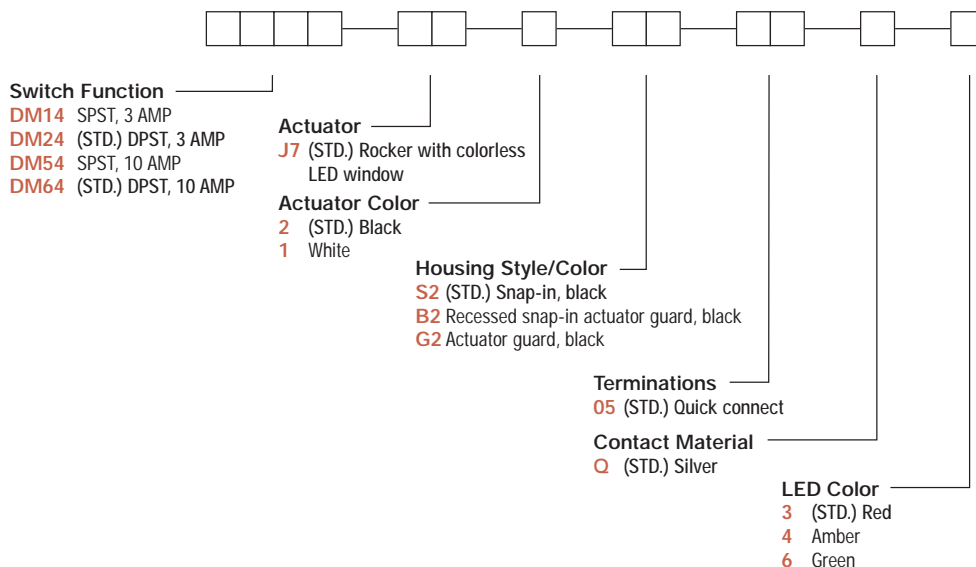
STATIONARY CONTACTS & TERMINALS: Copper or brass, silver plated.

LED TERMINALS: Brass, unplated.

CONTACT SPRING: Music wire or stainless steel.

Build-A-Switch

To order, simply select desired option from each category and place in the appropriate box. Available options are shown and described on pages G-61 and G-62. For additional options not shown in catalog, consult Customer Service Center.



Rocker



G

C&K DM Series Miniature Illuminated Power Rocker Switches

SWITCH FUNCTION

NO. POLES	MODEL NO.	AMP RATING*	SWITCH FUNCTION		CONNECTED TERMINALS		SCHEMATIC
			POS. 1	POS. 2	POS. 1	POS. 2	
SP	DM14 DM54	3 10	ON	OFF	1-1A	OPEN	<p>SPST</p>
DP	DM24 (STD.) DM64 (STD.)	3 10	ON	OFF	1-1A, 2-2A	OPEN	<p>DPST</p>
DPDT <p>Actuator shown in pos. 1 - 'ON' position.</p> <p>TERM. NOS. FOR REFERENCE ONLY SPST models (DM14 & DM54), omit terminals 2 and 2A.</p>							

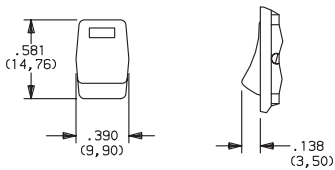
Part number shown: DM24J72S205Q3

* RATINGS: DM14 and DM24 models: 3 AMPS @ 125 V AC; 2 AMPS @ 250 V AC. DM54 and DM64 models: 10 AMPS @ 125 V AC; 5 AMPS @ 250 V AC.

All models with all options.

ACTUATOR

J7 (STD.) ROCKER WITH COLORLESS LED WINDOW

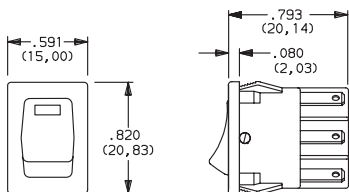


OPTION CODE	ACTUATOR COLOR
2	(STD.) BLACK
1	WHITE

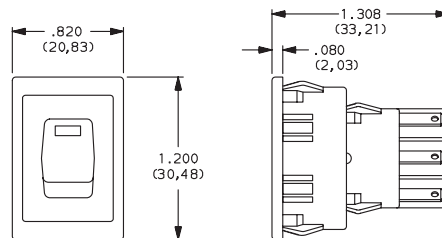
NOTE: Other colors available, consult Customer Service Center.

HOUSING STYLE/COLOR

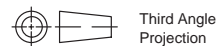
S2 (STD.) SNAP-IN, BLACK



B2 RECESSED SNAP-IN ACTUATOR GUARD, BLACK



NOTE: Housing finish: matte. Other colors available, consult Customer Service Center.



Dimensions are shown: IN (mm)
Dimensions subject to change

Rocker

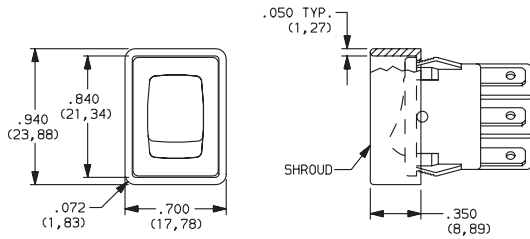
G

C&K DM Series Miniature Illuminated Power Rocker Switches

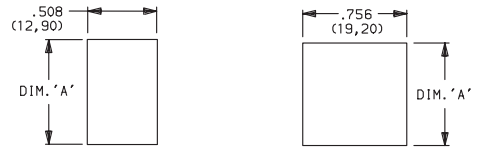
HOUSING STYLE/COLOR

G2 ACTUATOR GUARD, BLACK

New!



PANEL MOUNTING



'S2' & 'G2' housing style

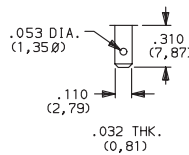
'B2' housing style

NOTE: Blank insert available for SP models only, see page G-63.

PANEL THK.	DIM 'A' 'S2' & 'G2' HOUSING STYLES	DIM 'A' 'B2' HOUSING STYLES
.030-.049 (0,75) (1,25)	.756 (19,20)	1.068 (27,13)
.049-.079 (1,25) (2,00)	.764 (19,40)	1.076 (27,33)
.079-.118 (2,00) (3,00)	.780 (19,80)	1.092 (27,74)

TERMINATIONS

05 (STD.) QUICK CONNECT



CONTACT MATERIAL

OPTION CODE	CONTACT AND TERMINAL MATERIAL	RATINGS	
Q (STD.)	SILVER 1.2	POWER	DM14 and DM24 Models: 3 AMPS @ 125 V AC; 2 AMPS @ 250 V AC. DM54 and DM64 Models: 10 AMPS @ 125 V AC; 5 AMPS @ 250 V AC.

CONTACT MATERIAL/APPLICATION RECOMMENDATIONS - SEE SECTION N.

¹ MOVABLE CONTACTS: DM14 and DM24 models: Copper, silver plated.
DM54 and DM64 models: Coin silver, silver plated.

All models with all options.

² STATIONARY CONTACTS & TERMINALS: Copper or brass, silver plated.

LED COLOR

OPTION CODE	LED COLOR	FORWARD V _{FD}	CURRENT I _{LED}	REVERSE V _R	INTENSITY M _{CD}	RECOMMENDED RESISTOR @ VOLTAGE		
						5V	12V	24V
3 (STD.)	Red	2.1	10	4V	1.6 typ.	270	1K	2.2K
4	Amber	2.2	20	4V	2.5 typ.	150	510	1.2K
6	Green	2.1	20	4V	2.0 typ.	150	510	1.2K



Dimensions are shown: IN (mm)
Dimensions subject to change

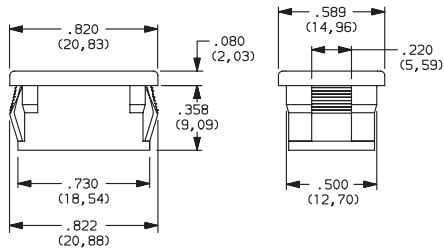
www.ittcannon.com



C&K DM Series Miniature Illuminated Power Rocker Switches

AVAILABLE HARDWARE

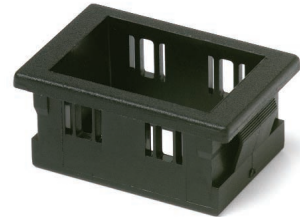
Blank Insert



PART NO.
057190200

Material: Zinc nylon 6/6
Finish: Matte

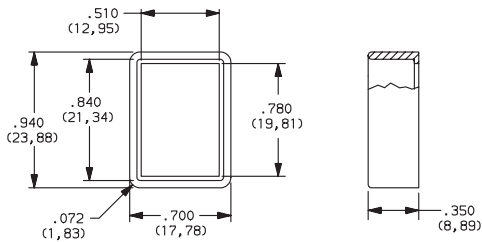
Recessed Bracket



PART NO.
057090100

Material: 6/6 Nylon
Finish: Matte

Actuator Guard



PART NO.
104C02000

Material: PBT thermoplastic
Finish: Matte

Rocker



G