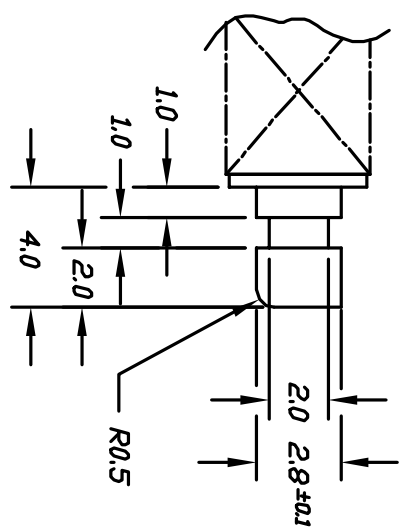
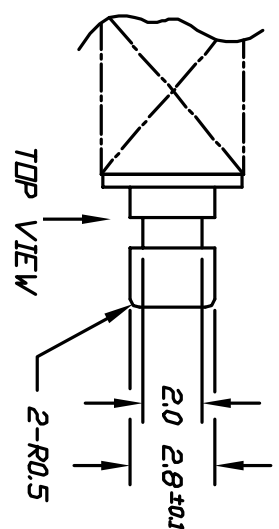


CIRCUIT: SPDT

CONTACT CONFIGURATION

- NOTES:
1. ALL DIMENSIONS IN MM
 2. GENERAL TOLERANCE: X.X=±0.4
X.XX=±0.25
 3. TERM. NOS. FOR REF. ONLY
 4. RATING: DC 30V, 0.3A
 5. CONTACT MATERIAL:
PHOSPHOR BRONZE W/ SILVER PLATING
 6. CONTACT RESISTANCE: 20 milli-Ohms max.
 7. DIELECTRIC STRENGTH: 1,000V rms @ Sea Level
 8. OPERATING FORCE: 230±100gf
 9. TRAVEL : FULL 3.5mm



(ACTUATOR DETAIL) SCALE 4:1

REV.	ECN No.	DESCRIPTION	DATE	CHKD
A	12310	RELEASED FOR PRODUCTION	7/19/02	CB

THE INFORMATION CONTAINED IN THIS DOCUMENT IS PROPRIETARY TO E-SWITCH AND IS NOT TO BE COPIED OR TRANSMITTED

TITLE		SCALE		DATE	DR	DWG	REV
LC 1258DA SP (Momentary)		2:1		1/18/00	MM	P070227	A

