

MH113* SERIES

MICRO HIGH FREQUENCY RF CABLES

SPECIFICATIONS

For complete specifications see www.samtec.com?MH113

Outer Contact Material:
Au plated Phosphor Bronze
Center Contact Material:
Au plated Phosphor Bronze (MHX)
Au plated BeCu (SMA)
Insulator Material:
PBT (MHX)
PTFE (SMA)
Operating Temperature:
-40 °C to +90 °C
Voltage Rating:
170 V max
Dielectric Withstanding Voltage:
200 Vrms
Frequency Range:
0~3 GHz
Contact Resistance:
Center Contact: 6 mΩ max
Outer Contact: 2 mΩ max
Insulator Resistance:
5,000 MΩ
Impedance: 50 Ω
RoHS Compliant: Yes

1.13 mm Cable:

Impedance: 50 Ω
Capacitance:
95 pF/meter
Max Attenuation (cable only):
2 dB @ 1 GHz
Conductor Size:
32 AWG, (1.13 mm) .045" dia.
Conductor Material:
Silver Plated Copper
Conductor Resistance:
0.60 Ω/meter max
Insulator Diameter:
(0.66 mm) .026"
Insulator Material: FEP
Shield Material:
Tinned Copper
Jacket Material: FEP
Jacket Diameter:
(1.13 mm) .045" dia
Bend Radius:
6.8 mm
Jacket Temp Rating:
-40 °C to +90 °C
RoHS Compliant: Yes

ALSO AVAILABLE (MOQ Required)

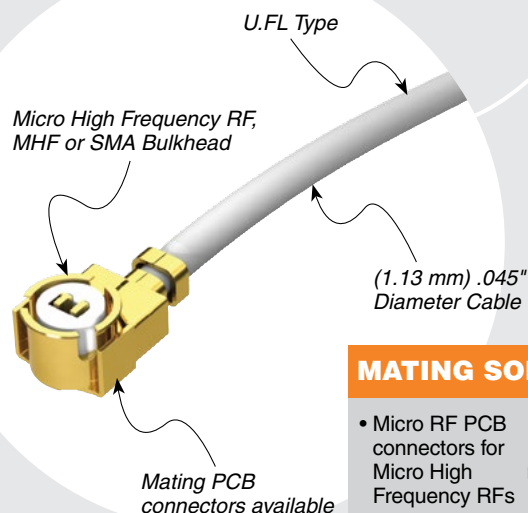
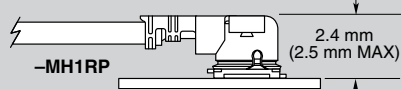
- Additional stripping and tinning options
 - Additional end connector combinations
 - Overall lengths
- Contact Samtec.

EXTRACTION TOOL

- -MH1RP = RSP-122893-01

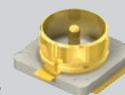
* MH113 Series was previously RF113 Series

APPLICATION



MATING SOLUTIONS

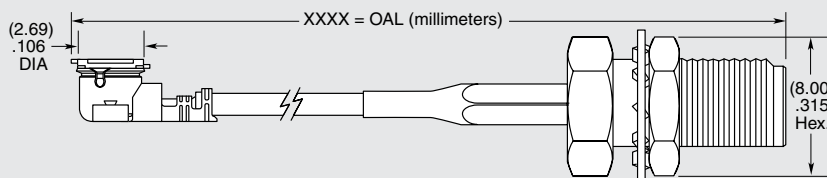
- Micro RF PCB connectors for Micro High Frequency RFs
- MH1RP end mates with RSP-122811-01 (Cycles: 30 max.)



MH113

END 1
CONNECTOREND 2
CONNECTOROVERALL
LENGTH

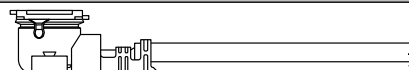
Specify
END OPTIONS
from chart



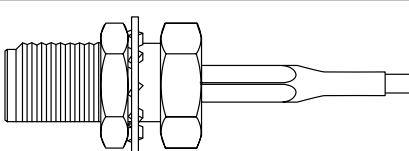
-0030
= 1.18" (30 mm)
-0050
= 1.97" (50 mm)
-0100
= 3.94" (100 mm)
-0150
= 5.91" (150 mm)
-0300
= 11.81" (300 mm)

END OPTIONS

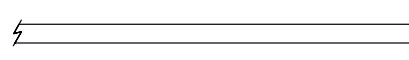
-MH1RP = MHF1 Type Plug
(3.9 μ" (.1 μm) Gold on Center Contact,
1.9 μ" (.05 μm) Gold on Shell)



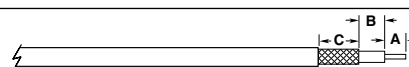
-01BJ1 = SMA Straight Bulkhead Jack
-01BJ2 = SMA Straight Bulkhead Jack, Reversed Polarity
-01SB1 = SMA Straight Jack, Sealed Bulkhead
-01SR1 = SMA Straight Jack, Sealed Bulkhead, Reversed Polarity
(30 μ" (0.76 μm) Gold on Center Contact, Gold Flash on Shell)



-SING =
Single Ended
(End 2 callout)



XXXXXX =
Stripped & Tinned
(End 2 callout)



STRIPPED & TINNED (Dimensions in mm)

CALLOUT	A	B	C
-303030	3.0	3.0	3.0
-303040	3.0	3.0	4.0
-403030	4.0	3.0	3.0
-403040	4.0	3.0	4.0
-404040	4.0	4.0	4.0

Both center conductor and braid shield are stripped, only the center conductor is tinned.

Due to technical progress, all designs, specifications and components are subject to change without notice.

WWW.SAMTEC.COM

All parts within this catalog are built to Samtec's specifications.
Customer specific requirements must be approved by Samtec and identified in a Samtec customer-specific drawing to apply.