

- NOTES:  
 1. MIN. PUSHOUT FORCE: .5 lb.  
 2. PLANARITY TO BE WITHIN .006 [.15].  
 3. Ⓞ REPRESENTS A CRITICAL DIMENSION FOR STATISTICAL PROCESS CONTROL.

UNLESS OTHERWISE NOTED

DIMENSIONS ARE IN INCHES		TOLERANCES ARE:	
ONE PLACE DECIMALS ± .1	THREE PLACE DECIMALS ± .005	ANGLES ± 2°	
TWO PLACE DECIMALS ± .01	FOUR PLACE DECIMALS ± .0020		

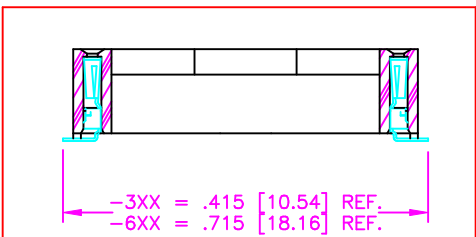
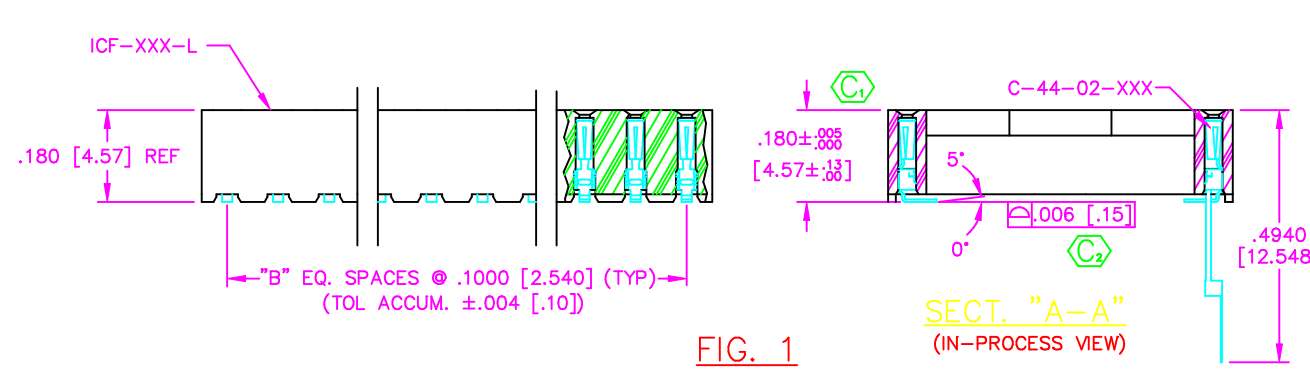
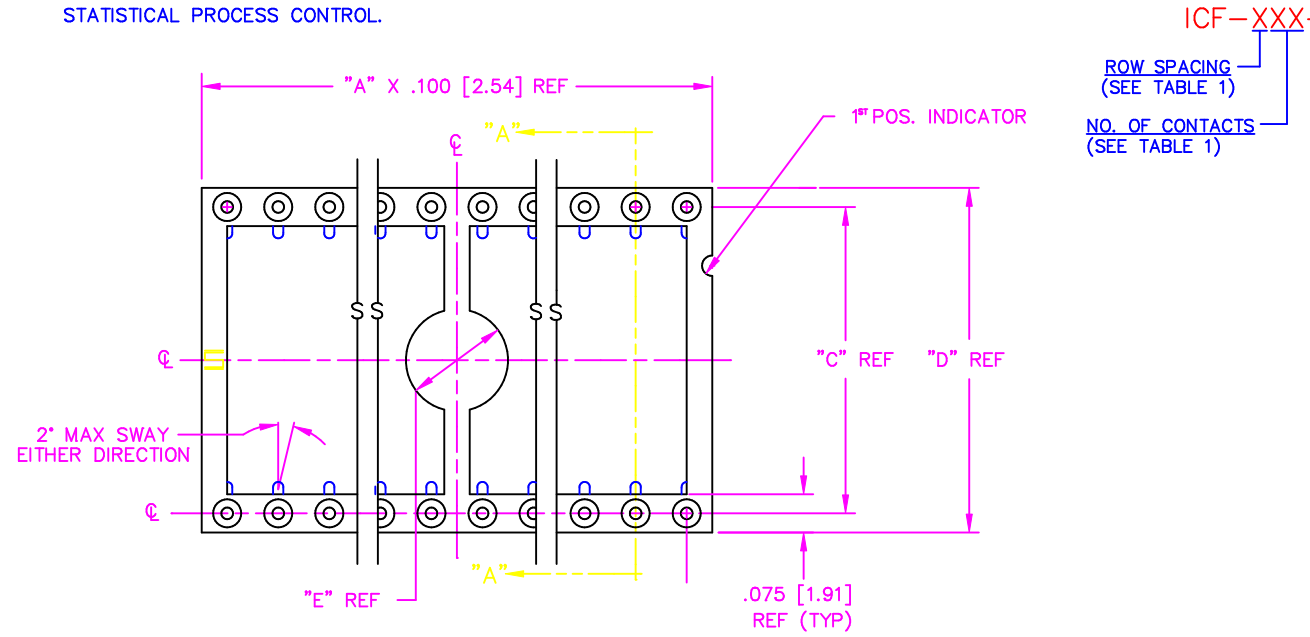


FIG. 2  
 LEAD STYLE 0  
 SAME AS FIG 1 EXCEPT AS SHOWN

- ICF-XXX-XXX-X-XX
- ROW SPACING (SEE TABLE 1)
  - NO. OF CONTACTS (SEE TABLE 1)
  - PACKAGING OPTION
    - TR: TAPE & REEL (FIG 5)
    - LEAVE BLANK FOR TUBE (FIG 4)
  - LEAD STYLES
    - I: TAILS IN - SEE FIG. 1
    - O: TAILS OUT - SEE FIG. 2
  - PLATING SPECIFICATION
    - S: SELECTIVE (USE C-44-02-S)
    - T: TIN (USE C-44-02-T)
    - F: FLASH SELECTIVE GOLD (USE C-44-02-F)
    - TL: TIN/LEAD (USE C-44-02-TL)
    - STL: SELECTIVE TIN/LEAD (USE C-44-02-STL)
    - TM: MATTE TIN (USE C-44-02-T)
    - FM: FLASH GOLD SELECTIVE, MATTE TIN TAIL (USE C-44-02-F)
    - SM: HEAVY GOLD SELECTIVE, MATTE TIN TAIL (USE C-44-02-S)

PACKAGE PARTS IN TUBE AS SHOWN (FIG 4)

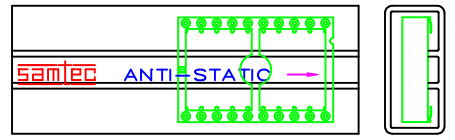
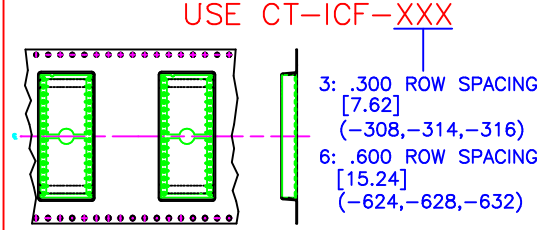


TABLE 2

SERIES	LEAD STYLE	PACKAGING TUBE	PLUG
.300 [7.62]	I	PT-1-24-01-25	TP-03
.600 [15.24]	I	PT-1-24-02-25	TP-03
.300 [7.62]	0	PT-1-24-03-25	TP-03
.600 [15.24]	0	PT-1-24-04-25	TP-03

PACKAGE PARTS IN TAPE & REEL AS SHOWN (FIG 5)



SURFACE MOUNT LEADS TO BE FACE DOWN IN THE POCKET

TABLE 1

"X"	"XX"	"A"	"B"	"C"	"D"	"E"
3	08	4	3	.3000 [7.620]	.375 [9.53]	.200 [5.08]
	14	7	6			
	16	8	7			
	18	9	8			
	20	10	9			
	22	11	10			
	24	12	11			
6	28	14	13	.6000 [15.240]	.675 [17.15]	.400 [10.16]
	24	12	11			
	28	14	13			
	32	16	15			
	40	20	19			
	48	24	23			

PROPRIETARY NOTE  
 THIS DOCUMENT CONTAINS INFORMATION CONFIDENTIAL AND PROPRIETARY TO SAMTEC INC. AND SHALL NOT BE REPRODUCED OR TRANSMITTED IN ANY FORM OR BY ANY MEANS, ELECTRONIC OR MECHANICAL, INCLUDING PHOTOCOPYING, RECORDING, OR BY ANY INFORMATION STORAGE AND RETRIEVAL SYSTEM, WITHOUT THE EXPRESS WRITTEN CONSENT OF SAMTEC INC.