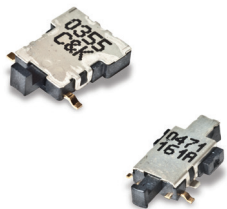


# KSM Series Side Actuated Detect Switches



## Features/Benefits

- Low profile – 1,5 mm
- Momentary, normally closed contact
- Gold contacts
- RoHS compliant and compatible

## Typical Applications

- Automotive
- Position sensing switch
- Edge card reset switch
- Smart card presence switch detector
- DSL and fiber optic networks

## Specifications

FUNCTION: Momentary action

CONTACT TYPE: SPST Normally closed

### Mechanical

TRAVEL TO BREAK: KSM1131D LFG 0,35 ± 0,15 mm

KSM6161 LFG 0,5 ± 0,20 mm

TOTAL TRAVEL: KSM1131D LFG 1,25 ± 0,2 mm

KSM6161 LFG 1,92 ± 0,2 mm

SWITCHING FORCE:

KSM1131D LFG 0,15N ≤ F<sub>ce</sub> ≤ 0,90 N

KSM6161 LFG 0,50N ≤ F<sub>ce</sub> ≤ 0,90 N

OPERATING LIFE: KSM1131D LFG 50,000 cycles

KSM6161 LFG 200,000 cycles

### Packaging

Switches are delivered on continuous tape, in reels of 2,000 pieces (KSM1131D LFG) and 1250 pieces (KSM6161 LFG)

## Electrical

MAXIMUM POWER:

KSM1131D LFG

0.2 VA

KSM6161 LFG

1.0 VA

MAXIMUM VOLTAGE:

24 VDC

32 VDC

MINIMUM VOLTAGE:

20 mV

20 mV

MAXIMUM CURRENT DC:

50 mA

50 mA

MINIMUM CURRENT DC:

1 mA

CONTACT RESISTANCE:

≤ 300 mΩ

≤ 900 mΩ

INSULATION RESISTANCE:

≥ 10<sup>9</sup> Ω

≥ 10<sup>9</sup>

DIELECTRIC STRENGTH:

≥ 250 Vrms

≥ 250 Vrms

BOUNCE TIME:

≤ 10 ms

≤ 1,25 ms

## Environmental

OPERATING TEMPERATURE: -40°C to +85°C

STORAGE TEMPERATURE: -55°C to +85°C

## Process

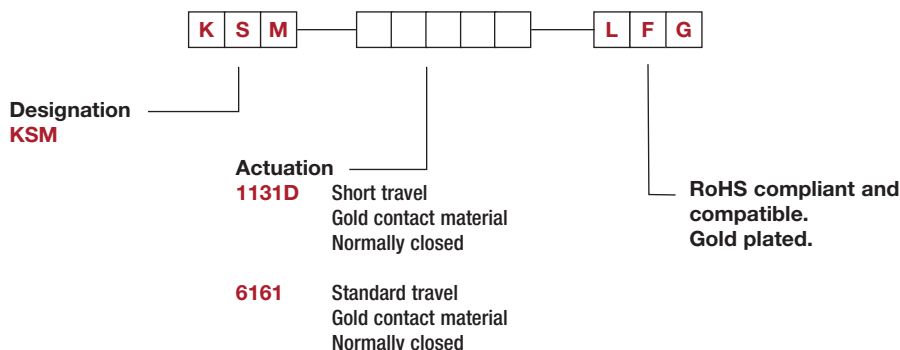
SOLDERING: Compatible with lead free reflow process

**NOTE:** Specifications listed above are for switches with standard options. For information on specific and custom switches, consult Customer Service Center.

## How To Order

Our easy build-a-switch concept allows you to mix and match options to create the switch you need. To order, select desired option from each category and place it in the appropriate box.

For any part number different from those listed above, please consult your local representative.

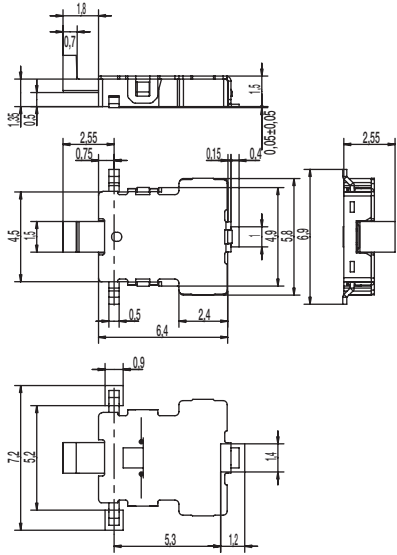


First Angle  
Projection

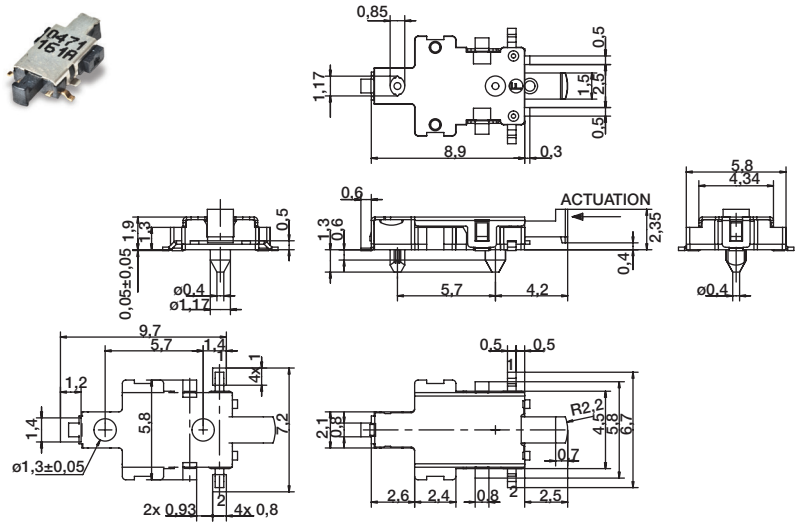
Dimensions are shown: mm  
Specifications and dimensions subject to change

# KSM Series Side Actuated Detect Switches

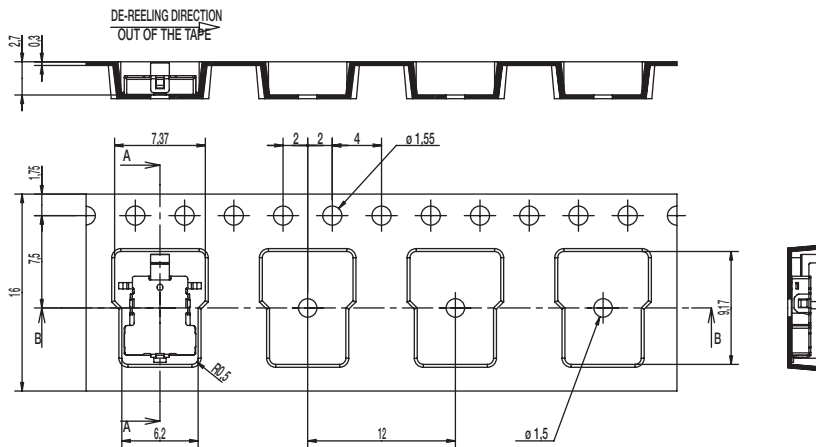
## KSM1131D LFG



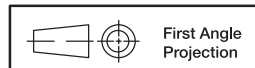
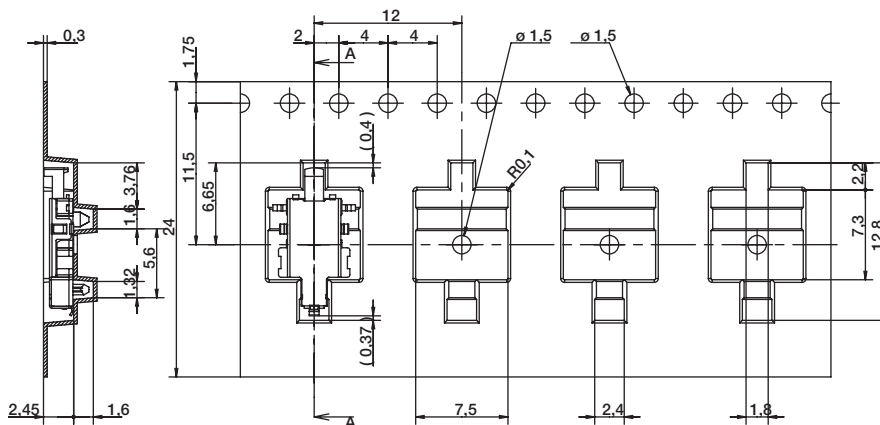
## KSM6161 LFG



## KSM1131D LFG



## KSM6161 LFG



Dimensions are shown: mm  
Specifications and dimensions subject to change

