

# R Series ROTA-SLIDE® Rotary Switches



Models Available

## Features/Benefits

- Multi-pole and multi-position
- Positive detent
- Panel and PCB mounting
- Enclosed
- RoHS Compliant

## Typical Applications

- Ceiling fans
- Industrial equipment
- Portable tools

## Specifications

CONTACT RATING: Q contact material: 5 AMPS @ 125 V AC; 2.5 AMPS @ 250 V AC; 0.5 AMP @ 125 V DC; 1/8 HP @ 125 and 250 VAC (UL/CSA).

See page K-20 for additional ratings.

ELECTRICAL LIFE: 10,000 make-and-break cycles at full load.

CONTACT RESISTANCE: Below 10 m  $\Omega$  typ. initial @ 2-4 V DC, 100 mA, for both silver and gold plated contacts.

INSULATION RESISTANCE: 10<sup>9</sup>  $\Omega$  min.

DIELECTRIC STRENGTH: 1,000 Vrms min. @ sea level.

INDEXING: 36°-one contact models, 10 position max.; two contact models, 5 position max.

OPERATING & STORAGE TEMPERATURE: -30°C to 95°C

## Materials

HOUSING & BUSHING: 6/6 nylon (UL 94V-2).

ACTUATOR: 6/6 nylon (UL 94V-2).

CONTACTS & TERMINALS: Q contact material: Copper, silver plated.

See page K-20 for additional contact materials.

CONTACT SPRING: Music wire or stainless steel.

MOUNTING NUT: Steel, zinc plated.

TERMINAL SEAL: Epoxy.

**NOTE:** Any models supplied with Q or B contact material are RoHS compliant.

**NOTE:** Specifications and materials listed above are for switches with standard options. For information on specific and custom switches, consult Customer Service Center.

## Build-A-Switch

To order, simply select desired option from each category and place in the appropriate box. Available options are shown and described on pages K-19 and K-20. For additional options not shown in catalog, consult Customer Service Center.

### Switch Function

- R100** SP, 36° Index, 10 pos. no stops
- R103** SP, 36° Index, 3 pos.
- R104** SP, 36° Index, 4 pos.
- R108** SP, 36° Index, 8 pos.
- R203** DP, 36° Index, 3 pos.
- R204** DP, 36° Index, 4 pos.
- R205** DP, 36° Index, 5 pos.

### Actuator

- 07** .500" high with .156" flat
- 05** .375" high with .156" flat
- 15** Screwdriver slot without bushing

### Mounting Style

- RR** 3/8-32 threaded bushing
- RN** PC without bushing
- RS** PC without bushing

### Terminations

- 03** Solder lug with hole
- 01** Solder lug with notch
- 02** PC Thru-hole
- WC** Wire Lead

### Contact Material

- Q** Silver
- B** Gold

### Seal

- NONE** No seal
- E** Epoxy seal



K

Rotary

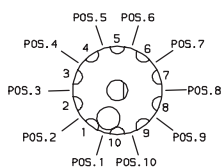
# R Series ROTA-SLIDE® Rotary Switches

## SWITCH FUNCTION



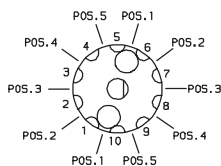
SP MODELS 36° INDEXING			
NO. POLES	MODEL NO.	SWITCH FUNCTION	TERMINALS
SP	<b>R100</b>	10 Position No Stops	All Terminals
	<b>R103</b>	3 Position	10-1-2-3
	<b>R104</b>	4 Position	10-1-2-3-4
	<b>R108</b>	8 Position	10-1-2-3-4-5-6-7-8

SP MODELS 36° INDEXING SCHEMATIC



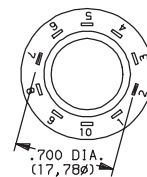
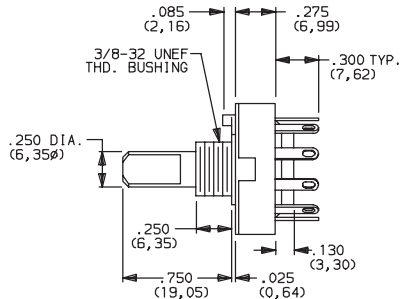
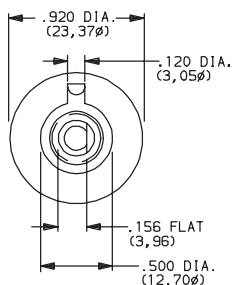
DP MODELS 36° INDEXING			
NO. POLES	MODEL NO.	SWITCH FUNCTION	TERMINALS
DP	<b>R203</b>	3 Position	10-1-2-3, 5-6-7-8
	<b>R204</b>	4 Position	All Terminals
	<b>R205</b>	5 Position	All Terminals

DP MODELS 36° INDEXING SCHEMATIC



All models **C&K** US with all options when ordered with 'Q' contact material.

**NOTE:** Break-before-make contacts. Actuators and contacts are shown in position 1. No common terminal is present. Switching function is provided by movable contacts shorting adjacent pairs of stationary contacts.



TERM. NOS.  
MOLDED ON HOUSING

Part number show: R10007RR03Q

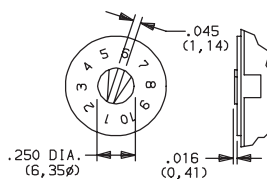
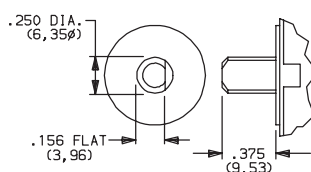
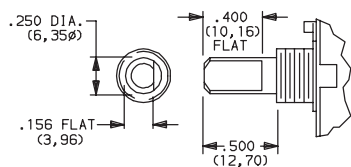
## ACTUATOR



**07** .50019" HIGH WITH .156" FLAT

**05** .375"19 HIGH WITH .156" FLAT

**15** SCREWDRIVER SLOT



Shown with 'RR' mounting style.  
For mounting styles without bushing,  
add .250 (6,35) to actuator length.

Shown with 'RN' mounting style.

Arrow on actuator marked red (std.).  
Shown with 'RS' mounting style.



Third Angle  
Projection

Dimensions are shown: Inch (mm)  
Specifications and dimensions subject to change

**C&K**

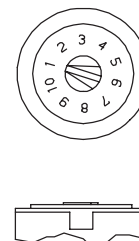
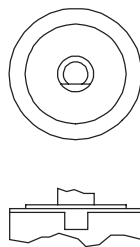
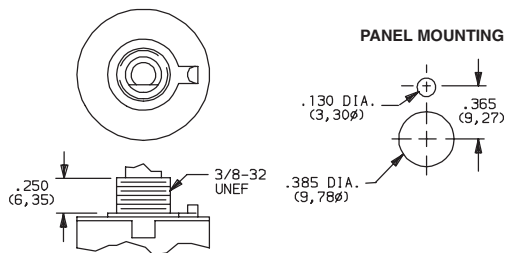
# R Series ROTA-SLIDE® Rotary Switches

## MOUNTING STYLE

**RR** 3/8-32 THREADED BUSHING

**RN** PC WITHOUT BUSHING

**RS** PC SCREWDRIVER SLOT WITHOUT BUSHING



Position numbers and characters are molded on housing.

Mounting nut included (part number 175000100).

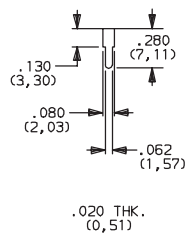
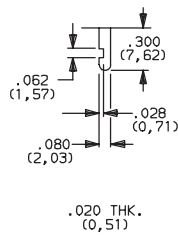
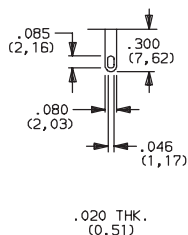
## TERMINATIONS

**03** SOLDER LUG WITH HOLE

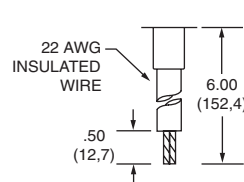
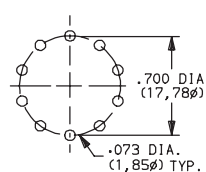
**01** SOLDER LUG WITH NOTCH

**02** PC THRU-HOLE

**WC** WIRE LEAD



### PC MOUNTING



## CONTACT MATERIAL

OPTION CODE	CONTACT AND TERMINAL MATERIAL	RATING	
		POWER	5 AMPS @ 125 V AC; 2.5 AMPS @ 250 V AC; 0.5 AMP @ 125 V DC (UL/CSA); 1/8 HP @ 125 and 250 VAC (UL/CSA).
<b>Q</b>	<b>SILVER</b> <sup>2</sup>		
<b>B</b>	<b>GOLD</b> <sup>1</sup>	LOW LEVEL/DRY CIRCUIT	0.4 VA MAX. @ 20 V AC or DC MAX.

\* Note: See Technical Data section of this catalog for RoHS compliant and compatible definition and specifications.

<sup>1</sup> CONTACTS & TERMINALS: Copper, with gold plate over nickel plate.

<sup>2</sup> CONTACTS & TERMINALS: Copper, silver plated. (Standard with all termination options.)

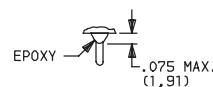
**NOTE:** Any models supplied with Q, B or G contact material are RoHS compliant.

All models **C&K** with all options when ordered with 'Q' contact material.

## SEAL

**NONE** NO SEAL

**E** EPOXY SEAL



**C&K**



Third Angle Projection

Dimensions are shown: Inch (mm)  
Specifications and dimensions subject to change