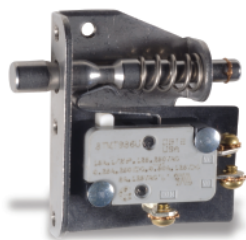


TL Series

Door Interlock Switches



Features/Benefits

- Push/pull motion
- Multiple mounting configurations
- Wide variety of termination options
- Ratings up to 15 AMPS

Typical Applications

- Computer enclosures
- Panel builders
- Industrial enclosures

Specifications

CONTACT RATING: 15 AMPS @ 125 & 250 V AC; 0.25 AMP @ 250 V DC; 0.5 AMP @ 125 V DC; 1/2 HP @ 125 & 250 V AC; 3 AMPS @ 125 V AC "L".

ELECTRICAL LIFE: 150,000 cycles at 15 AMPS @ 250 V AC.

INSULATION RESISTANCE: 1,000 M ohm min.

DIELECTRIC STRENGTH: 1,000 Vrms min. @ sea level.

OPERATING TEMPERATURE: -67°F to 302°F (-55°C to 150°C).

NOTE: Specifications and materials listed above are for switches with standard options. For information on specific and custom switches, consult Customer Service Center.

Materials

SWITCH HOUSING: Thermoplastic or general purpose phenolic (UL 94V-0).

MOUNTING BRACKET: Stainless steel.

PLUNGER: Stainless steel.

ACTUATOR BUTTON: Thermoplastic (UL 94V-0).

SPRING: Copper alloy.

PIVOT: Brass alloy.

MOVABLE CONTACT: Fine silver.

STATIONARY CONTACTS: Fine silver.

TERMINALS: Copper alloy.

Build-A-Switch

To order, simply select desired option from each category and place in the appropriate box. Available options are shown and described on pages J-83 and J-84. For additional options not shown in catalog, consult Customer Service Center.

Model

- 11TL** One TM Series SPDT switch
- 12TL** One TM Series SPDT switch
- 23TL** Two TM Series SPDT switches

Terminations

- 60** Screw
- 40** .187" Quick connect
- 4A** .250" Quick connect

Plunger

- 2** Stainless steel, not tapped
- 4** Stainless steel, tapped



Dimensions are shown: Inch (mm)
Specifications and dimensions subject to change

MODEL

[illegible]

J

Snap-acting

Technical drawing of the 6000 Series Solenoid Valve, showing front and side views with dimensions in inches and millimeters.

Front View Dimensions:

- Overall width: 1.87 [47,4]
- Top mounting hole spacing: .51 [13]
- Top mounting hole diameter: .265 [6,73]
- Top mounting hole center-to-center distance: .343 [8,71]
- Top mounting hole diameter: 1.50 [38,1]
- Top mounting hole diameter: .75 [19,1]
- Top mounting hole diameter: .16 [4]
- Top mounting hole diameter: 6-32 NC THD. (5)

Side View Dimensions:

- Overall height: 1.87 [47,4]
- Top mounting hole spacing: .375 MAX. FREE POS. [9,53]
- Top mounting hole spacing: .203 MIN. OPER. POS. [5,16]
- Top mounting hole spacing: .125 MAX DEPRESSED POS. [3,18]
- Top mounting hole spacing: .305 (2) [7,75]
- Top mounting hole spacing: .343 [8,71]
- Top mounting hole spacing: 1.50 [38,1]
- Top mounting hole diameter: ϕ .25 [6,4]
- Top mounting hole diameter: ϕ .21 [5,3]
- Top mounting hole diameter: 1.59 [40,3]

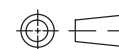
Labels:

- STAINLESS STEEL PLUNGER
- FLEXIBLE INSULATOR

Notes:

- Torque screws to 6in lbs max

Torque screws to
6in lbs max



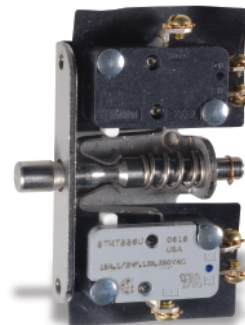
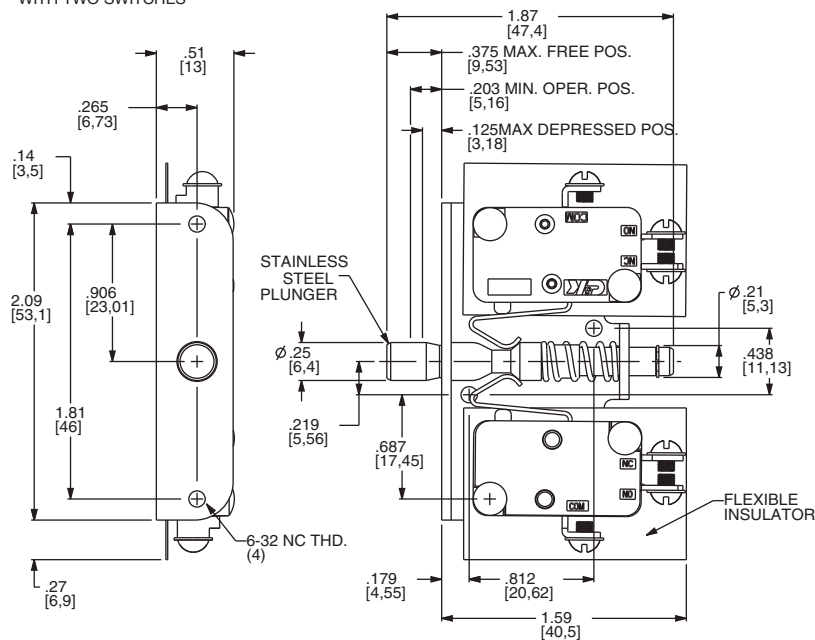
Third Angle Projection

Dimensions are shown: Inches (mm)
Specifications and dimensions subject to change

TL Series Door Interlock Switches

MODEL

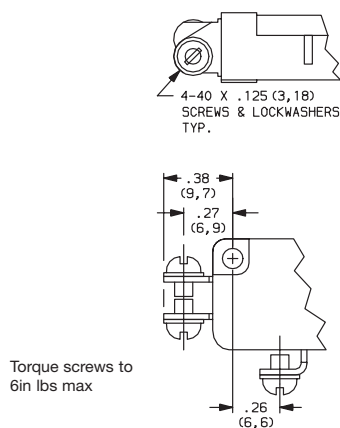
23TL WITH TWO SWITCHES



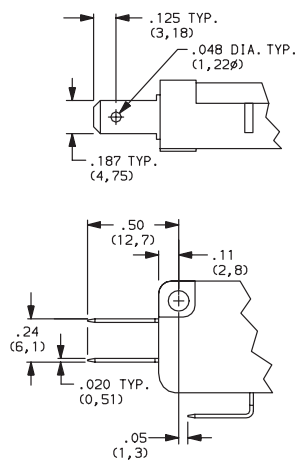
23TL602
SPDT

TERMINATIONS

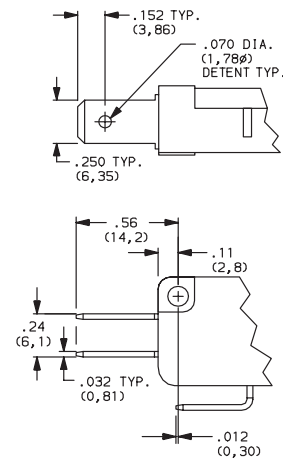
60 SCREW TERMINALS



40 .187" QUICK CONNECT



4A .250" QUICK CONNECT



PLUNGERS

2 STAINLESS STEEL, NOT TAPPED

4 STAINLESS STEEL, TAPPED 4-40 x .375 (9,52) min. depth

