

Technical specification:

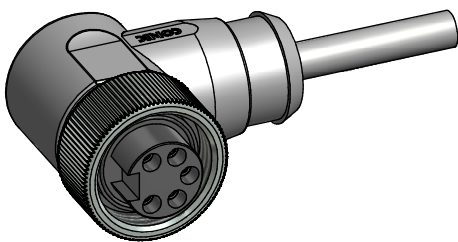
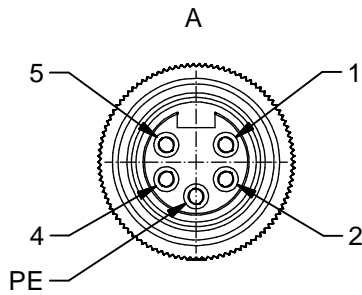
| | |
|--|--|
| Rated voltage: IEC 60664-1 | 300 V |
| Overvoltage category: IEC 60664-1 | 2 |
| Overvoltage: IEC 60664-1 | 2,7 kV |
| Current rating: IEC 60512-3 at 40°C | 0,75mm ² 1,5mm ² 8 A 10 A |
| Insulation resistance: IEC 60512 | >=100 MΩ |
| Pollution degree: IEC 60664-1 | 3/2 |
| Degree of protection: IEC 60529 | IP 68, in mated condition |
| Temperature range: IEC 60664-1 | -30°C ... +80°C |
| Mating cycles: IEC 60512-9a | >=100 |
| Termination: | crimped |

Materials:

| | |
|------------------|---------------------|
| Contact: | CuZn |
| Contact plating: | Nickel, gold plated |
| Contact carrier: | TPU, UL 94 |
| Coupling nut: | CuZn, nickel plated |
| Moulding body: | TPU, UL 94, grey |

Contact assignment:

- 1) black
- 2) blue
- PE) green-yellow
- 4) brown
- 5) white



| Part no: | Description: | Length L: | Cable: |
|----------|-------------------------------------|-----------|--|
| 41-01080 | SAL - 7/8 - RKW4PE - 2 / A3 | 2m | PVC, UL 2464, grey, 5x0,75mm ² Cable: 781-A37500 |
| 41-01081 | SAL - 7/8 - RKW4PE - 3 / A3 | 3m | |
| 41-01082 | SAL - 7/8 - RKW4PE - 5 / A3 | 5m | |
| 41-01083 | SAL - 7/8 - RKW4PE - 10 / A3 | 10m | |
| 41-xxxxx | SAL - 7/8 - RKW4PE - ... / A3 | x | |
| 41-01177 | SAL - 7/8 - RKW4PE - 2 / A3 / 150 | 2m | PVC, UL 2464, grey, 5x1,50mm ² Cable: 781-A38500 |
| 41-01178 | SAL - 7/8 - RKW4PE - 3 / A3 / 150 | 3m | |
| 41-01179 | SAL - 7/8 - RKW4PE - 5 / A3 / 150 | 5m | |
| 41-01180 | SAL - 7/8 - RKW4PE - 10 / A3 / 150 | 10m | |
| 41-xxxxx | SAL - 7/8 - RKW4PE - ... / A3 / 150 | x | |

D see data sheet cable

| | | | | |
|---|---|--|--------------------|-----------------|
| DO NOT ALTER CAD DRAWING BY HAND Directive 2002/95/EC RoHS compliant | Index: b 02.09.10 KH Ä3736 technical specification changed, part no. cable in table added, neutral line added | dim. in mm | title: | |
| | | | date | name |
| | tolerance of cable: L ≤ 4m: L + 40mm L > 4m: L + 1% | drawn 08.10.07 Franz appd. 08.10.07 Mankopf | dwg no: | |
| | general tolerance: 0 ± 0,50mm 0,0 ± 0,25mm 0,00 ± 0,10mm | | | 41K1A301 |
| <small>THIS DRAWING MAY NOT BE COPIED OR REPRODUCED IN ANY WAY, AND MAY NOT BE PASSED ON TO A THIRD PARTY WITHOUT WRITTEN PERMISSION. OWNERSHIP AND COPYRIGHT OF CONEC GmbH</small> | | | part no: see table | |