

**Technical specification:**

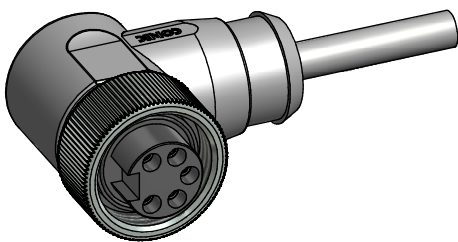
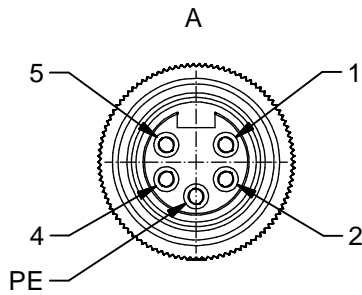
Rated voltage: IEC 60664-1	300 V
Overvoltage category: IEC 60664-1	2
Overvoltage: IEC 60664-1	2,7 kV
Current rating: IEC 60512-3 at 40°C	0,75mm <sup>2</sup> 1,5mm <sup>2</sup> 8 A 10 A
Insulation resistance: IEC 60512	>=100 MΩ
Pollution degree: IEC 60664-1	3/2
Degree of protection: IEC 60529	IP 68, in mated condition
Temperature range: IEC 60664-1	-30°C ... +80°C
Mating cycles: IEC 60512-9a	>=100
Termination:	crimped

**Materials:**

Contact:	CuZn
Contact plating:	Nickel, gold plated
Contact carrier:	TPU, UL 94
Coupling nut:	CuZn, nickel plated
Moulding body:	TPU, UL 94, grey

**Contact assignment:**

- 1) black
- 2) blue
- PE) green-yellow
- 4) brown
- 5) white



Part no:	Description:	Length L:	Cable:
41-01080	SAL - 7/8 - RKW4PE - 2 / A3	2m	PVC, UL 2464, grey, 5x0,75mm <sup>2</sup> Cable: 781-A37500
41-01081	SAL - 7/8 - RKW4PE - 3 / A3	3m	
41-01082	SAL - 7/8 - RKW4PE - 5 / A3	5m	
41-01083	SAL - 7/8 - RKW4PE - 10 / A3	10m	
41-xxxxx	SAL - 7/8 - RKW4PE - ... / A3	x	
41-01177	SAL - 7/8 - RKW4PE - 2 / A3 / 150	2m	PVC, UL 2464, grey, 5x1,50mm <sup>2</sup> Cable: 781-A38500
41-01178	SAL - 7/8 - RKW4PE - 3 / A3 / 150	3m	
41-01179	SAL - 7/8 - RKW4PE - 5 / A3 / 150	5m	
41-01180	SAL - 7/8 - RKW4PE - 10 / A3 / 150	10m	
41-xxxxx	SAL - 7/8 - RKW4PE - ... / A3 / 150	x	

D see data sheet cable

DO NOT ALTER CAD DRAWING BY HAND Directive 2002/95/EC RoHS compliant	Index: b 02.09.10 KH Ä3736 technical specification changed, part no. cable in table added, neutral line added	dim. in mm	title:	
			date	name
	tolerance of cable: L ≤ 4m: L + 40mm L > 4m: L + 1%	drawn 08.10.07 Franz appd. 08.10.07 Mankopf	dwg no:	
	general tolerance: 0 ± 0,50mm 0,0 ± 0,25mm 0,00 ± 0,10mm			<b>41K1A301</b>
<small>THIS DRAWING MAY NOT BE COPIED OR REPRODUCED IN ANY WAY, AND MAY NOT BE PASSED ON TO A THIRD PARTY WITHOUT WRITTEN PERMISSION. OWNERSHIP AND COPYRIGHT OF CONEC GmbH</small>			part no: see table	