

Technical specification:

Rated voltage: 60 V
IEC 61076-2-101

Current rating: 4 A at 40°C
IEC 61076-2-101

Insulation resistance: >=100 MΩ
IEC 60512

Pollution degree: 3/2
IEC 60664-1

Degree of protection: IP 67, in mated condition
IEC 60529

Temperature range: -30°C ... +80°C

Mating cycles: >=100
IEC 60512-9a

Materials:

Contact: CuZn

Contact plating: Nickel, gold plated

Contact carrier: PBT GF, UL 94

Sealing connector: FPM
chassis: NBR

Counternut: CuZn, nickel plated

Socket housing: CuZn, nickel plated

Grouting: Polyurethane-resin, UL 94

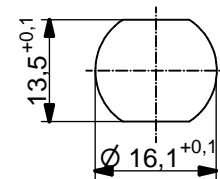
Installation specification:

recommended torque: 1-1,2 Nm

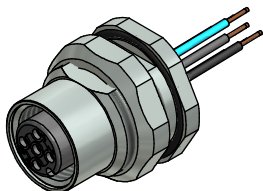
Conec installation tool: Torque wrench: 36-000200
Insert across flats 19: 36-000250

Contact assignment:

- 1) brown
- 2) white
- 3) blue
- 4) black
- 5) grey



Minimum wall thickness 1,5mm,
alternativ panel cut-out d=16,1

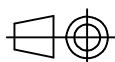


Part no:	Description:	Pos	Length L:	Wire:
43-01048	SAL - 12 - FKH5.1 - 0,5	5	0,5m	AWG 24 PVC, UL
43-xxxxx	SAL - 12 - FKH5.1 - ...	5	x	

DO NOT ALTER CAD DRAWING BY HAND

Directive 2002/95/EC RoHS compliant

Index: c 23.11.12 MG Ä4555
Data sheet revised, technical specification changed, materials corrected



dim. in mm

title:
**Female socket M12x1 with wire,
backmounting**

tolerance of wire: L <= 0,5m: L + 20mm
L > 0,5m: L + 4%

	date	name
drawn	04.04.07	Fromm
appd.	04.04.07	Mankopf

dwg no:

43K1A210

general tolerance: 0 ± 0,50mm
0,0 ± 0,25mm
0,00 ± 0,10mm



part no:

see table

THIS DRAWING MAY NOT BE COPIED OR REPRODUCED IN ANY WAY, AND MAY NOT BE PASSED ON TO A THIRD PARTY WITHOUT WRITTEN PERMISSION. OWNERSHIP AND COPYRIGHT OF CONEC GmbH