

**Technical specification:**

Rated voltage: 250 V  
IEC 61076-2-101

Current rating: 4 A at 40°C  
IEC 61076-2-101

Insulation resistance: >=100 MΩ  
IEC 60512

Pollution degree: 3/2  
IEC 60664-1

Degree of protection: IP 67, in mated condition  
IEC 60529

Temperature range: -30°C ... +85°C

Mating cycles: >=100  
IEC 60512-9a

**Materials:**

Contact: CuZn

Contact plating: Nickel, gold plated

Contact carrier: PBT GF, UL 94

Sealing chassis: NBR

Counternut: CuZn, nickel plated

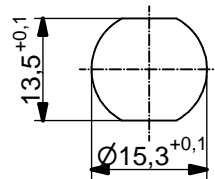
Socket housing: CuZn, nickel plated

Grouting: Polyurethane-resin, UL 94

**Installation specification:**

Recommended torque: 1-1,2 Nm

Conec installation tool: Torque wrench: 36-000200  
Insert across flats 19: 36-000250



Minimum wall thickness 1,5mm,  
alternativ panel cut-out d=15,3

Part no:	Description:	Pos	Length L:	D1
43-01251	SAL - 12B - FSH4 - P5,5 - 9	4	5,5mm	Ø5,0
43-01252	SAL - 12B - FSH4 - P12 - 9	4	12mm	Ø5,0

DO NOT ALTER CAD DRAWING BY HAND Directive 2011/65/EU RoHS compliant	Index: c 08.09.14 MG Ä5180 temperature range changed		title: Male socket M12x1 with dip solder, backmounting, PG9, Profibus DP		
			date	name	dwg no:  43K1A609
		drawn	12.02.08	Fromm	
		appd.	18.02.08	W.Schmidt	
general tolerance: 0 ± 0,50mm 0,0 ± 0,25mm 0,00 ± 0,10mm					
<small>THIS DRAWING MAY NOT BE COPIED OR REPRODUCED IN ANY WAY, AND MAY NOT BE PASSED ON TO A THIRD PARTY WITHOUT WRITTEN PERMISSION. OWNERSHIP AND COPYRIGHT OF CONEC GmbH</small>					