

Contact assignment:

- | | |
|------------|----------------|
| 1 - brown | 7 - black |
| 2 - blue | 8 - grey |
| 3 - white | 9 - red |
| 4 - green | 10 - violet |
| 5 - pink | 11 - grey-pink |
| 6 - yellow | 12 - red-blue |

Technical specification :

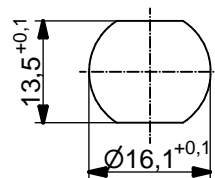
- | | |
|------------------------|---------------------------|
| Rated voltage: | 30 V |
| IEC 61076-2-101 | |
| Current rating: | 1,5 A at 40°C |
| IEC 61076-2-101 | |
| Insulation resistance: | >=100 MΩ |
| IEC 60512 | |
| Pollution degree: | 3/2 |
| IEC 60664-1 | |
| Degree of protection: | IP 67, in mated condition |
| IEC 60529 | |
| Temperature range: | -30°C ... +80°C |
| Mating cycles: | >=100 |
| IEC 60512-9a | |

Materials:

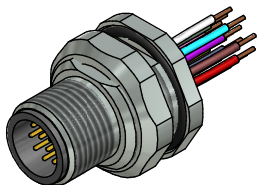
- | | |
|------------------|---------------------------|
| Contact: | CuZn |
| Contact plating: | Nickel, gold plated |
| Contact carrier: | PBT GF, UL 94 |
| Sealing chassis: | NBR |
| Counter nut: | CuZn, nickel plated |
| Socket housing: | CuZn, nickel plated |
| Grouting: | Polyurethane-resin, UL 94 |

Installation specification:

- | | |
|--------------------------|---|
| Recommended torque: | 1-1,2 Nm |
| Conec installation tool: | Torque wrench:
36-000200
Insert across flats 19:
36-000250 |



Minimum wall thickness 1,5mm, alternativ panel cut-out d=16,1



Part no:	Description:	Pos	Length L:	Wire:
43-01344	SAL - 12 - FSH12 - 0,5	12	0,5m	AWG 26 PVC, UL
43-xxxxx	SAL - 12 - FSH12 - ...	12	x	

DO NOT ALTER CAD DRAWING BY HAND Directive 2002/95/EC RoHS compliant	Index: c 30.11.12 MG Ä4555 Data sheet revised, technical specification changed, materials corrected	dim. in mm	title: Male socket M12x1 with wire, backmounting		
					date
	tolerance of wire: L ≤ 0,5m: L + 20mm L > 0,5m: L + 4%	drawn 17.10.08 Fromm appd. 17.10.08 Mankopf	dwg no: 43K1A776		
	general tolerance: 0 ± 0,50mm 0,0 ± 0,25mm 0,00 ± 0,10mm			part no: see table	

THIS DRAWING MAY NOT BE COPIED OR REPRODUCED IN ANY WAY, AND MAY NOT BE PASSED ON TO A THIRD PARTY WITHOUT WRITTEN PERMISSION. OWNERSHIP AND COPYRIGHT OF CONEC GmbH