

**Technical specification:**

Rated voltage: IEC 61076-2-101	4pol 5pol 240 V 60 V
Current rating: IEC 61076-2-101	4 A at 40°C
Insulation resistance: IEC 60512	>=100 MΩ
Pollution degree: IEC 60664-1	3/2
Degree of protection: IEC 60529	IP 67, in mated condition
Temperature range: IEC 60664-1	-30°C ... +80°C
Mating cycles: IEC 60512-9a	>=100

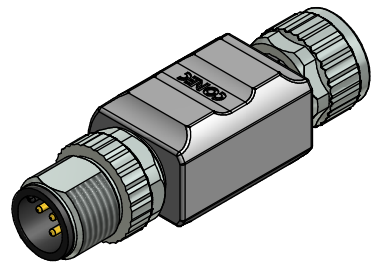
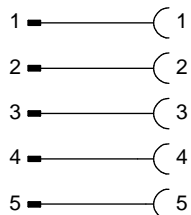
**Materials:**

Contact:	CuZn
Contact plating:	Nickel, gold plated
Contact carrier:	TPU GF, UL 94
Sealing:	FPM
Coupling nut/ screw:	GD-Zn, nickel plated
Moulding body:	TPU, UL 94, grey

**Installation specification:**

Recommended torque:	0,6 Nm
Conec installation tool:	Torque wrench: 36-000200 Insert across flats 13: 36-000220

**Contact assignment:**



Part no:	Description:
43-05130	SAL - 12 - TS4 - TK4
43-05131	SAL - 12 - TS5 - TK5

DO NOT ALTER CAD DRAWING BY HAND Directive 2002/95/EC RoHS compliant	Index: a 28.03.11 VF Ä3767 Coupling nut/ screw modified, spanner flats added, data sheet modified	dim. in mm	<b>title:</b> Adapter, male connector M12x1 - female connector M12x1  <b>dwg no:</b> 43K1A958  <b>part no:</b> see table						
	tolerance of cable:			<table border="1"> <tr> <th>date</th> <th>name</th> </tr> <tr> <td>drawn 06.10.09</td> <td>Fromm</td> </tr> <tr> <td>appd. 06.10.09</td> <td>Mankopf</td> </tr> </table>	date	name	drawn 06.10.09	Fromm	appd. 06.10.09
	date	name							
	drawn 06.10.09	Fromm							
appd. 06.10.09	Mankopf								
general tolerance:	<table border="0"> <tr> <td>0</td> <td>± 0,50mm</td> </tr> <tr> <td>0,0</td> <td>± 0,25mm</td> </tr> <tr> <td>0,00</td> <td>± 0,10mm</td> </tr> </table>	0	± 0,50mm	0,0	± 0,25mm	0,00	± 0,10mm		
0	± 0,50mm								
0,0	± 0,25mm								
0,00	± 0,10mm								
<small>THIS DRAWING MAY NOT BE COPIED OR REPRODUCED IN ANY WAY, AND MAY NOT BE PASSED ON TO A THIRD PARTY WITHOUT WRITTEN PERMISSION. OWNERSHIP AND COPYRIGHT OF CONEC GmbH</small>									