

Technical specification:

Rated voltage: 3pos
IEC 61076-2-101 30 V

Current rating: 4 A at 40°C
IEC 61076-2-101

Insulation resistance: >=100 MΩ
IEC 60512

Pollution degree: 3/2
IEC 60664-1

Degree of protection: IP 67, in mated condition
IEC 60529

Temperature range: -30°C ... +80°C
IEC 60664-1

Mating cycles: >=100
IEC 60512-9a

Materials:

Contact: CuZn

Contact plating: Nickel, gold plated

Contact carrier: TPU GF, UL 94

Sealing: FPM

Coupling nut/ screw: GD-Zn, nickel plated

Moulding body axial: TPU, UL 94, grey

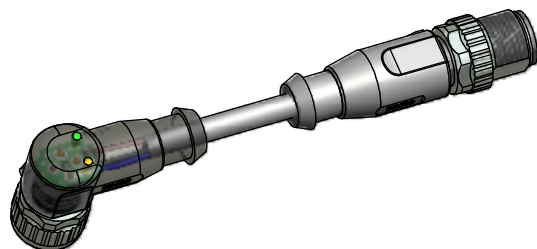
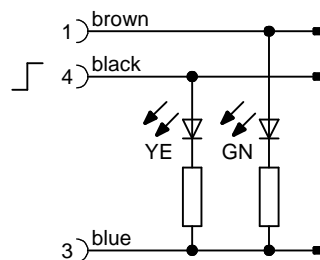
Moulding body angled: TPU, UL 94, translucent

Installation specification:

Recommended torque: 0,6 Nm

Conec installation tool: Torque wrench: 36-000200
Insert across flats 13: 36-000220

Contact assignment:



Part no:	Description:	Length L:	Cable:
43-10392	SAL - 12 - RKW3 - RS3 - 2L - 0,3 / A1	0,3m	PVC, grey, 3x0,34mm² Cable: 781-A13300
43-10393	SAL - 12 - RKW3 - RS3 - 2L - 0,6 / A1	0,6m	
43-10394	SAL - 12 - RKW3 - RS3 - 2L - 1,5 / A1	1,5m	
43-10395	SAL - 12 - RKW3 - RS3 - 2L - 3 / A1	3m	
43-xxxxx	SAL - 12 - RKW3 - RS3 - 2L - ... / A1	x	

D see data sheet cable

DO NOT ALTER CAD DRAWING BY HAND Directive 2002/95/EC RoHS compliant	Index: b 01.02.11 VF Ä3767 Coupling nut/ screw modified, spanner flats added, data sheet modified	dim. in mm	title: Connecting cable M12x1, female connector angled with LED - male connector axial	
	tolerance of cable: L ≤ 4m: L + 40mm L > 4m: L + 1%			
	THIS DRAWING MAY NOT BE COPIED OR REPRODUCED IN ANY WAY, AND MAY NOT BE PASSED ON TO A THIRD PARTY WITHOUT WRITTEN PERMISSION. OWNERSHIP AND COPYRIGHT OF CONEC GmbH	date		name
		drawn		14.03.07
	appd.	14.03.07	Mankopf	
	CONEC ®		dwg no: 43K1A453	
			part no: see table	