

## ISL6414 - Enhanced ISL6411

### Introduction

The ISL6414 integrates three ultra low noise, low dropout linear regulators providing a highly integrated single-chip solution for 802.11 wireless chipset architectures. It operates from 3.0V to 3.8V input and provides preset output voltages - LDO1 set at 1.8V, LDO2 and LDO3 set at 2.84V.

The device features power sequencing specifically for wireless chipsets. The outputs are sequenced such that LDO1, the 1.8V core regulator voltage, is always within regulation before LDO2, the 2.84V output LDO, is sequenced on. When powering down, power to the 2.84V LDO2 is removed before the 1.8V LDO1 core regulator is sequenced off.

Designed with an internal P-channel MOSFET pass transistor, the ISL6414 operates with a low supply current. An output fault detection circuit indicates loss of regulation on any of the three outputs. Other features include a logic controlled shutdown mode, short circuit and thermal shutdown protection, and reverse battery protection.

The ISL6414 also includes a RESET function. Integration of this function into the ISL6414 eliminates the additional RESET IC and external support components required in wireless chipset power supply applications. The IC asserts a RESET signal whenever the  $V_{CC}$  (IN) supply voltage drops below a preset threshold, keeping it asserted for at least 100ms after  $V_{CC}$  (IN) has risen above the reset threshold. Two RESET outputs are provided;  $\overline{\text{RESET}}$  is a push-pull active-LOW output, while RESET is an active-HIGH output.

### Applications

- PRISM® 3, PRISM GT™, and PRISM WWR Chipsets
- WLAN Cards
  - PCMCIA, Cardbus32, MiniPCI Cards
  - Compact Flash Cards
- Hand-Held Instruments

### ISL6414 Reference Design

TABLE 1. ISL6414 EVALUATION BOARD

BOARD NAME	IC PART NUMBER	PACKAGE
ISL6414EVAL1	ISL6414IR	16-Ld QFN

### Quick Start Evaluation

The evaluation board is shipped "ready to use" right from the box. The board accepts a 3.3V input from a standard power supply. The output can be exercised through the use of an external load.

There are posts available on the board for introducing power to the board and for drawing current from the regulated outputs. Post connectors are also available to monitor power good conditions FAULT (P11), RESET (P9) and  $\overline{\text{RESET}}$  (P10). Posts for Shutdown functions SHDN (P12) and SHDN3 (P13) allows low power mode function testing.

Each evaluation board kit is sent with 5 samples of ISL6414IR.

### Recommended Test Equipment

To test the functionality of the ISL6414, the following equipment is recommended:

- An adjustable 0V - 5V, 2A capable bench power supply
- An electronic load
- A Four channel oscilloscope with probes
- A Precision digital multimeter

### Power and Load Connections

**Input Voltage** - Connect the positive lead of the adjustable bench power supply to the 3.3V post (P3). Connect the ground lead of the supply to GND post (P4).

**Output Voltages** - The ISL6414EVAL1 provides fixed output voltages for use in Wireless Chipset applications. Internal trimmed resistor networks inside the chip set the nominal output voltages as below:

$$V_{OUT1} = 1.8V \text{ (P5)}$$

$$V_{OUT2} = 2.84V \text{ (P7)}$$

$$V_{OUT3} = 2.84V \text{ (P1)}$$

The outputs can be exercised through external load on connectors. The maximum currents are  $V_{OUT1}$  - 500mA,  $V_{OUT2}$  - 300mA and  $V_{OUT3}$  - 200mA.

**Output Loading, Sourcing Current** - To load the  $V_{OUT1}$  output connect the positive lead of the electronic load to the  $V_{OUT1}$  (P5) post and the return terminal of the same load channel to the GND (P6) post. Similarly connect the positive terminal of the second load channel to the  $V_{OUT2}$  (P7) post and the return terminal to the GND (P8) post to load the output of LDO2. The LDO3 output can be loaded by connecting the positive terminal of a third channel of the electronic load to the  $V_{OUT3}$  (P1) post and the return terminal to the GND (P2) post.

## Evaluation Board Performance

ISL6414EVAL1 Evaluation board provides easy platform to characterize performance of the IC.

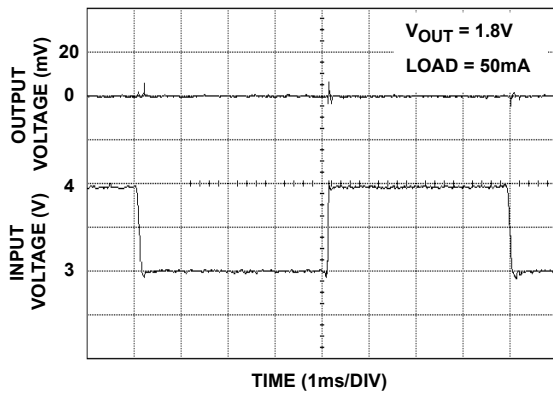


FIGURE 1. LINE TRANSIENT RESPONSE ( $V_{OUT1}$ )

## Output Performance

Figures below show transient response and regulation for LDO1, LDO2 and LDO3.

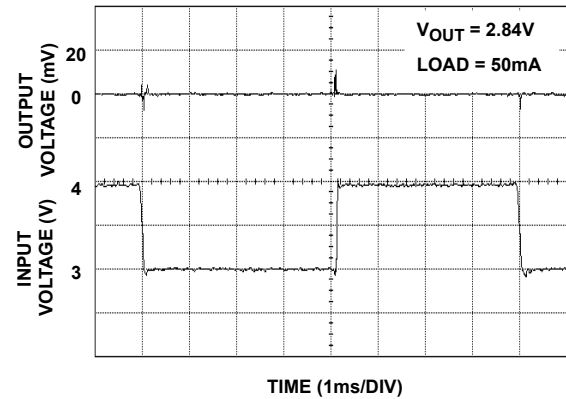


FIGURE 2. LINE TRANSIENT RESPONSE ( $V_{OUT2}$ )

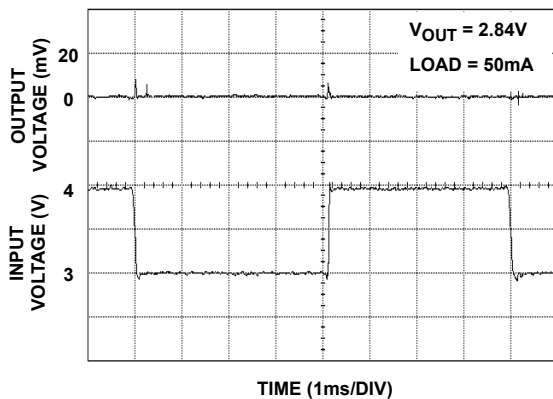


FIGURE 3. LINE TRANSIENT RESPONSE ( $V_{OUT3}$ )

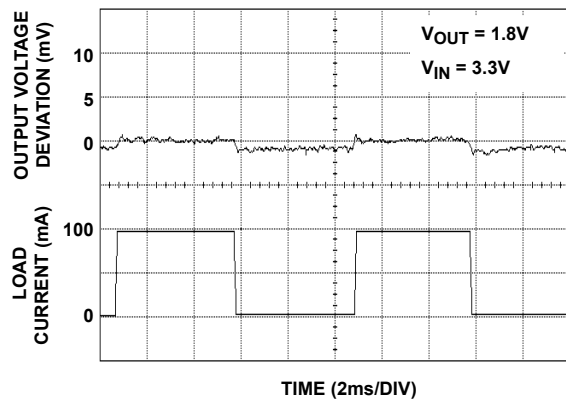


FIGURE 4. LOAD TRANSIENT RESPONSE ( $V_{OUT1}$ )

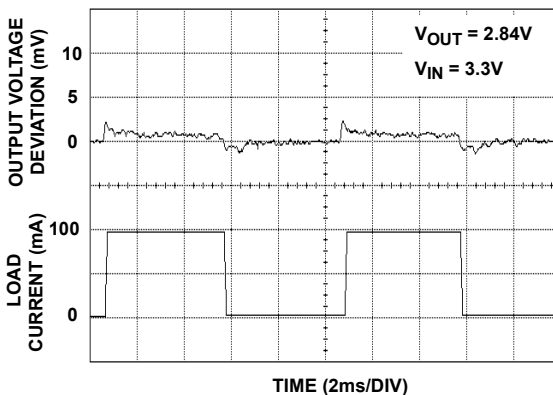


FIGURE 5. LOAD TRANSIENT RESPONSE ( $V_{OUT2}$ )

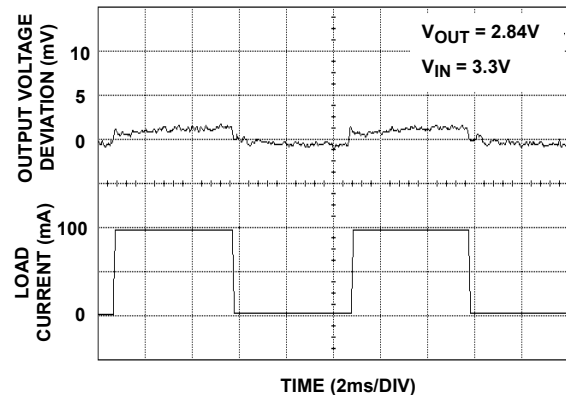


FIGURE 6. LOAD TRANSIENT RESPONSE ( $V_{OUT3}$ )

### Dropout Voltage

The ISL6414 features a typical  $0.5\Omega$   $r_{DS(ON)}$  P-channel MOSFET pass transistors. This provides several advantages over similar designs using PNP bipolar pass transistors. The P-Channel MOSFET requires no base drive, which reduces quiescent current considerably. PNP based regulators waste considerable current in dropout when the pass transistor saturates. They also use high base drive currents under large loads. The ISL6414 does not suffer from these problems and ultra low drop-out regulators to maintain 2.84V supplies within regulation with worst case minimum line input. Both LDO2 and LDO3 can supply full load with less than 3.0V input. Figure below shows the dropout voltage vs output load current for both LDO2 and LDO3.

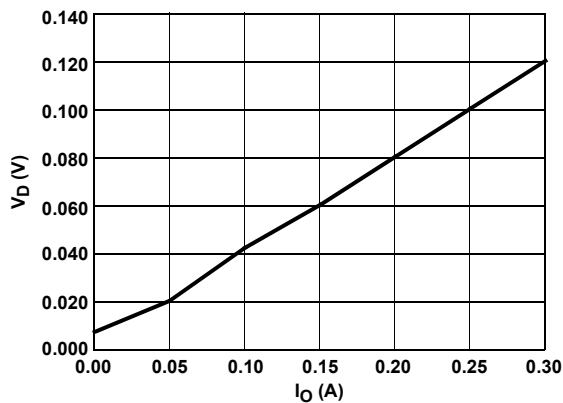


FIGURE 7. LD02 DROPOUT VOLTAGE

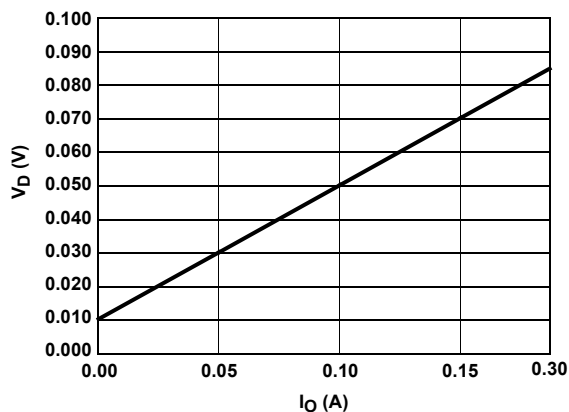


FIGURE 8. LD03 DROPOUT VOLTAGE

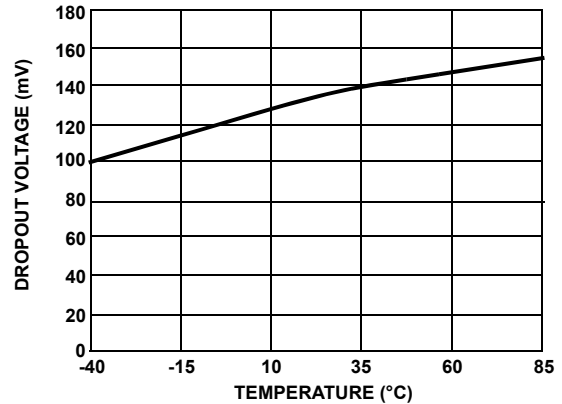


FIGURE 9. LD02 DROPOUT VOLTAGE vs TEMPERATURE

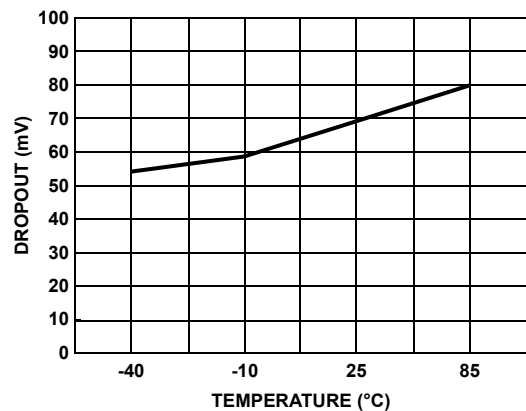


FIGURE 10. LD03 DROPOUT VOLTAGE vs TEMPERATURE

### Current Limit

The ISL6414 monitors and controls the pass transistor's gate voltage to limit the output current. The current limit for LDO1 is 550mA, LDO2 is 330mA and LDO3 is 250mA. Performance in over current event can be tested by applying over load on respective LDO outputs. The FAULT output will go low for over current condition on any of the three LDO. The ISL6414 based DC-DC converter is fully protected from short circuit to ground outputs due to the current limit and thermal protection features.

### Integrated RESET for MAC/ Baseband Processors

The ISL6414 includes a microprocessor supervisory circuit. This circuit eliminates the extra RESET IC and external components needed in wireless chipset applications. This block performs a single function; it asserts a RESET signal whenever the  $V_{IN}$  supply voltage decreases below a preset threshold 2.63V, keeping it asserted for a programmable time (set by external capacitor CT) after the  $V_{IN}$  pin voltage has risen above the RESET threshold.

The push pull output stage of the reset circuit provides both an active-Low RESET (P10) and an active-HIGH RESET (P9) output. This function is guaranteed to be in the correct state for  $V_{IN}$  down to 1V. In addition to issuing a reset to the microprocessor during power-up, power down and brownout conditions, this block is relatively immune to short duration, negative-going  $V_{IN}$  transients/glitches. Figure below shows the relations between RESET timing capacitor and programmable RESET delay.

### Thermal Overload Protection

Thermal overload protection limits total power dissipation in the ISL6414. When the junction temperature ( $T_J$ ) exceeds  $+150^{\circ}\text{C}$ , the thermal sensor sends a signal to the shutdown logic, turning off the pass transistor and allowing the IC to cool. The pass transistor turns on again after the IC's junction temperature cools  $20^{\circ}\text{C}$ , resulting in a pulsed output during continuous thermal overload conditions. Thermal overload protection protects the ISL6414 against fault conditions. For continuous operation, do not exceed the absolute maximum junction temperature rating of  $+150^{\circ}\text{C}$ .

### Shutdown

Driving the SHDN input (P12) LOW puts both LDO1 and LDO2 into shutdown mode. Driving the SHDN3 (P13) input LOW puts LDO3 in shutdown mode. Pulling the SHDN and SHDN3 pins LOW simultaneously, puts the entire chip into shutdown mode, and supply current drops to  $5\mu\text{A}$  typical. External pull up resistors are not required because both SHDN and SHDN3 inputs have internal pull-up resistors, so that in normal operation the outputs are always enabled. During shutdown mode using the SHDN pin, the FAULT output will remain HIGH (refer to Figure 11).

### Fault-Detection Circuitry

The FAULT pin monitors LDO1 output regulation, as well as fault conditions such as current limit and thermal shutdown. The FAULT output goes LOW, if the LDO1 output is out of regulation by  $\pm 5.5\%$  (typ.). During shutdown mode using the SHDN pin, the FAULT output will remain HIGH (refer to Figure 11).

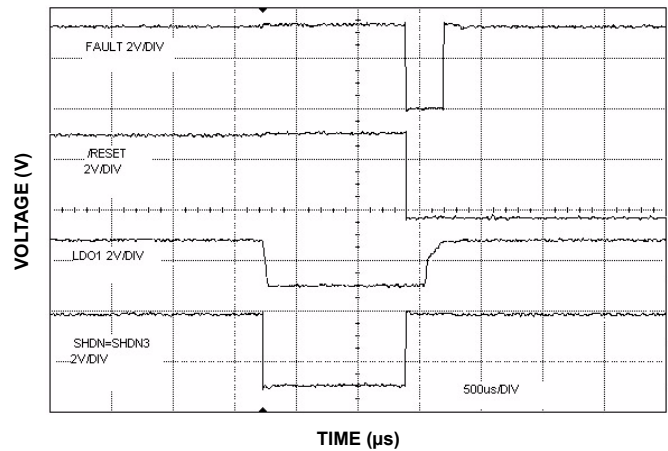


FIGURE 11. SHUTDOWN vs RESET and FAULT

### Operating Region and Power Dissipation

The maximum power dissipation of ISL6414 depends on the thermal resistance of the IC package and circuit board, the temperature difference between the die junction and ambient air, and the rate of air flow. The power dissipated in the device is:

$$P_T = P_1 + P_2 + P_3, \text{ where}$$

$$P_1 = I_{OUT1} (V_{IN} - V_{OUT1})$$

$$P_2 = I_{OUT2} (V_{IN} - V_{OUT2})$$

$$P_3 = I_{OUT3} (V_{IN} - V_{OUT3})$$

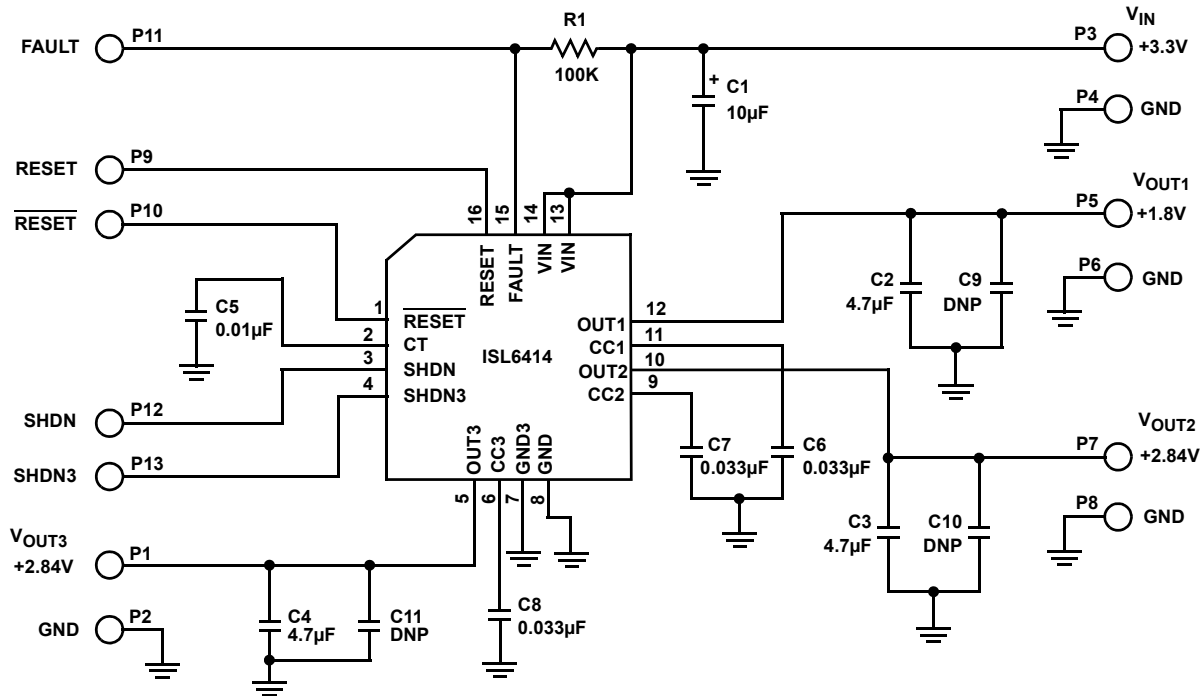
The maximum allowed power dissipation is:

$$P_{MAX} = (T_{JMAX} - T_A) / \theta_{JA}$$

Where  $T_{JMAX} = 150^{\circ}\text{C}$ ,  $T_A$  = ambient temperature, and  $\theta_{JA}$  is the thermal resistance from the junction to the surrounding environment.

For Intersil documents available on the web, see <http://www.intersil.com/>

[1] ISL6414 Data Sheet, Intersil Corporation, File No. FN9128.

**ISL6414EVAL1 Schematic****ISL6414EVAL1 Bill of Materials**

ITEM	REFERENCE	QTY	PART NUMBER	PART TYPE	DESCRIPTION	PACKAGE	VENDOR
1	U1	1	ISL6414IR	IC, Linear, Multi-Output	Regulator, Low Drop Out	16-Lead QFN 4x4	Intersil
<b>CAPACITORS</b>							
2	C1	1	1210ZC106MAT2A	Capacitor, Ceramic, X7R	10µF, 20%, 10V	SM_1210	AVX/Panasonic
3	C2, C3, C4	3	1210ZC475MAT2A	Capacitor, Ceramic, X7R	4.7µF, 20%, 10V	SM_1210	AVX/Panasonic
4	C9, C10, C11 (DNP)	3		Capacitor, Ceramic, X7R		SM_1210	AVX/Panasonic
5	C5	1	0603ZC103KAT2A	Capacitor, Ceramic, X7R	0.01µF, 10%, 10V	SM_0603	AVX/Panasonic
6	C6, C7, C8	3	0603ZC333JAT2A	Capacitor, Ceramic, X7R	0.033µF, 5%, 10V	SM_0603	AVX/Panasonic
<b>RESISTORS</b>							
7	R1	1		Resistor, Film	100kΩ, 5%, 0.1W	SM_0603	Panasonic
<b>OTHERS</b>							
8	P1 - P13	13	1514-2	Turrett Post	Terminal post, through-hole, 1/4 inch tall	PTH	Keystone

## ISL6414EVAL1 Evaluation Board Layout

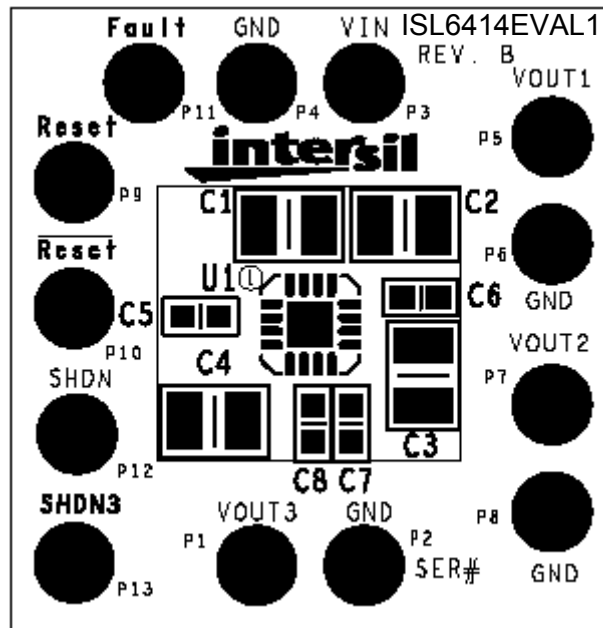


FIGURE 12. ISL6414EVAL1 - TOP LAYER SILK SCREEN

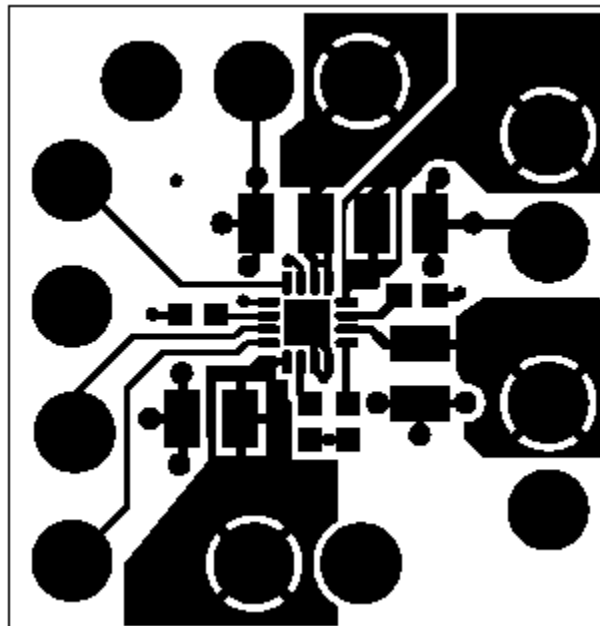


FIGURE 13. ISL6414EVAL1 - TOP LAYER

---

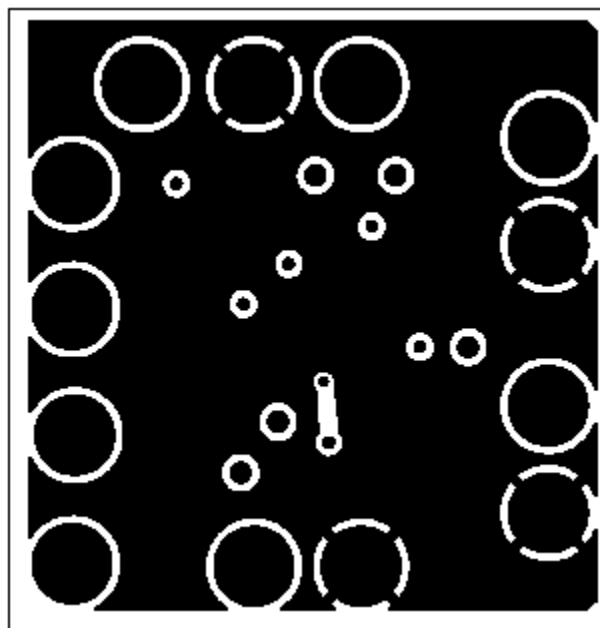
**ISL6414EVAL1 Evaluation Board Layout** (Continued)

FIGURE 14. ISL6414EVAL1 - LAYER 2 (GROUND)

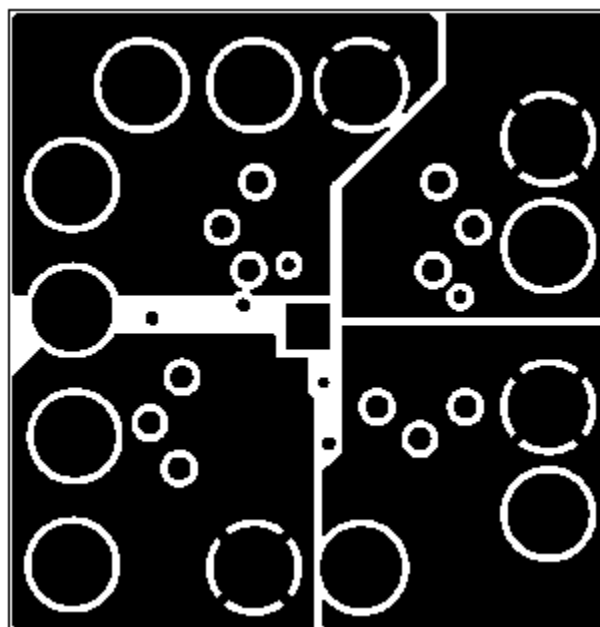


FIGURE 15. ISL6414EVAL1 - LAYER 3 (POWER)

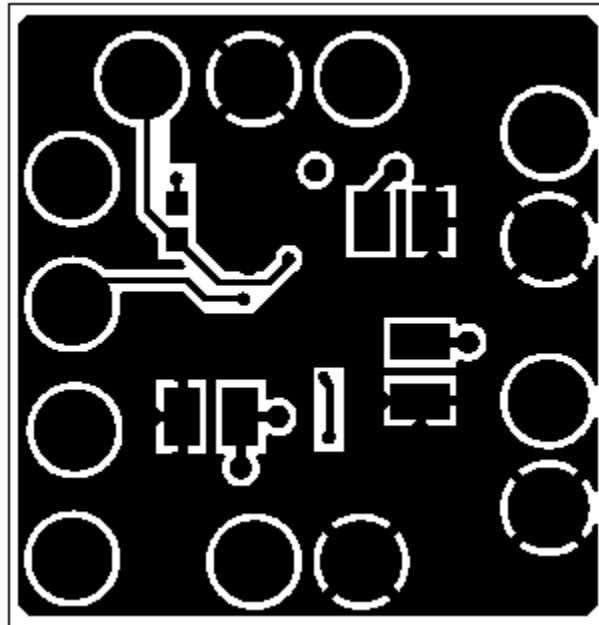
**ISL6414EVAL1 Evaluation Board Layout** (Continued)

FIGURE 16. ISL6414EVAL1 - LAYER 4 (BOTTOM)

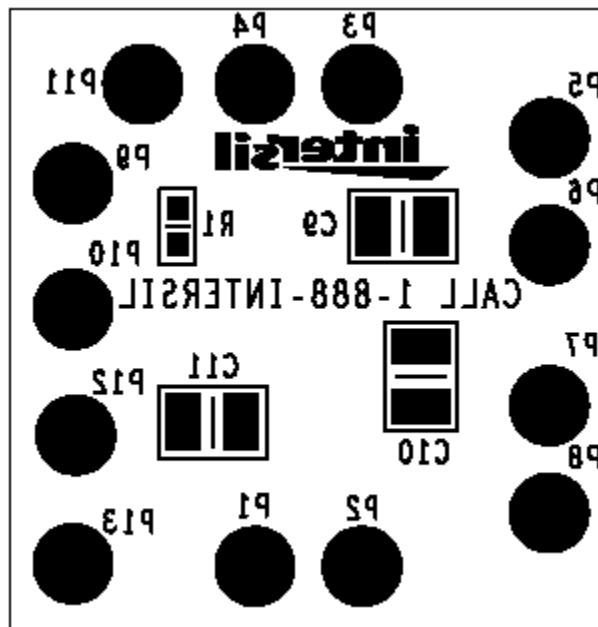


FIGURE 17. ISL6414EVAL1 - BOTTOM LAYER SILK SCREEN



## Notice

1. Descriptions of circuits, software and other related information in this document are provided only to illustrate the operation of semiconductor products and application examples. You are fully responsible for the incorporation or any other use of the circuits, software, and information in the design of your product or system. Renesas Electronics disclaims any and all liability for any losses and damages incurred by you or third parties arising from the use of these circuits, software, or information.
  2. Renesas Electronics hereby expressly disclaims any warranties against and liability for infringement or any other claims involving patents, copyrights, or other intellectual property rights of third parties, by or arising from the use of Renesas Electronics products or technical information described in this document, including but not limited to, the product data, drawings, charts, programs, algorithms, and application examples.
  3. No license, express, implied or otherwise, is granted hereby under any patents, copyrights or other intellectual property rights of Renesas Electronics or others.
  4. You shall not alter, modify, copy, or reverse engineer any Renesas Electronics product, whether in whole or in part. Renesas Electronics disclaims any and all liability for any losses or damages incurred by you or third parties arising from such alteration, modification, copying or reverse engineering.
  5. Renesas Electronics products are classified according to the following two quality grades: "Standard" and "High Quality". The intended applications for each Renesas Electronics product depends on the product's quality grade, as indicated below.

"Standard": Computers; office equipment; communications equipment; test and measurement equipment; audio and visual equipment; home electronic appliances; machine tools; personal electronic equipment; industrial robots; etc.

"High Quality": Transportation equipment (automobiles, trains, ships, etc.); traffic control (traffic lights); large-scale communication equipment; key financial terminal systems; safety control equipment; etc.

Unless expressly designated as a high reliability product or a product for harsh environments in a Renesas Electronics data sheet or other Renesas Electronics document, Renesas Electronics products are not intended or authorized for use in products or systems that may pose a direct threat to human life or bodily injury (artificial life support devices or systems; surgical implantations; etc.), or may cause serious property damage (space system; undersea repeaters; nuclear power control systems; aircraft control systems; key plant systems; military equipment; etc.). Renesas Electronics disclaims any and all liability for any damages or losses incurred by you or any third parties arising from the use of any Renesas Electronics product that is inconsistent with any Renesas Electronics data sheet, user's manual or other Renesas Electronics document.
  6. When using Renesas Electronics products, refer to the latest product information (data sheets, user's manuals, application notes, "General Notes for Handling and Using Semiconductor Devices" in the reliability handbook, etc.), and ensure that usage conditions are within the ranges specified by Renesas Electronics with respect to maximum ratings, operating power supply voltage range, heat dissipation characteristics, installation, etc. Renesas Electronics disclaims any and all liability for any malfunctions, failure or accident arising out of the use of Renesas Electronics products outside of such specified ranges.
  7. Although Renesas Electronics endeavors to improve the quality and reliability of Renesas Electronics products, semiconductor products have specific characteristics, such as the occurrence of failure at a certain rate and malfunctions under certain use conditions. Unless designated as a high reliability product or a product for harsh environments in a Renesas Electronics data sheet or other Renesas Electronics document, Renesas Electronics products are not subject to radiation resistance design. You are responsible for implementing safety measures to guard against the possibility of bodily injury, injury or damage caused by fire, and/or danger to the public in the event of a failure or malfunction of Renesas Electronics products, such as safety design for hardware and software, including but not limited to redundancy, fire control and malfunction prevention, appropriate treatment for aging degradation or any other appropriate measures. Because the evaluation of microcomputer software alone is very difficult and impractical, you are responsible for evaluating the safety of the final products or systems manufactured by you.
  8. Please contact a Renesas Electronics sales office for details as to environmental matters such as the environmental compatibility of each Renesas Electronics product. You are responsible for carefully and sufficiently investigating applicable laws and regulations that regulate the inclusion or use of controlled substances, including without limitation, the EU RoHS Directive, and using Renesas Electronics products in compliance with all these applicable laws and regulations. Renesas Electronics disclaims any and all liability for damages or losses occurring as a result of your noncompliance with applicable laws and regulations.
  9. Renesas Electronics products and technologies shall not be used for or incorporated into any products or systems whose manufacture, use, or sale is prohibited under any applicable domestic or foreign laws or regulations. You shall comply with any applicable export control laws and regulations promulgated and administered by the governments of any countries asserting jurisdiction over the parties or transactions.
  10. It is the responsibility of the buyer or distributor of Renesas Electronics products, or any other party who distributes, disposes of, or otherwise sells or transfers the product to a third party, to notify such third party in advance of the contents and conditions set forth in this document.
  11. This document shall not be reprinted, reproduced or duplicated in any form, in whole or in part, without prior written consent of Renesas Electronics.
  12. Please contact a Renesas Electronics sales office if you have any questions regarding the information contained in this document or Renesas Electronics products.
- (Note 1) "Renesas Electronics" as used in this document means Renesas Electronics Corporation and also includes its directly or indirectly controlled subsidiaries.
- (Note 2) "Renesas Electronics product(s)" means any product developed or manufactured by or for Renesas Electronics.

(Rev.4.0-1 November 2017)



### SALES OFFICES

### Renesas Electronics Corporation

<http://www.renesas.com>

Refer to "<http://www.renesas.com/>" for the latest and detailed information.

**Renesas Electronics America Inc.**  
1001 Murphy Ranch Road, Milpitas, CA 95035, U.S.A.  
Tel: +1-408-432-8888, Fax: +1-408-434-5351

**Renesas Electronics Canada Limited**  
9251 Yonge Street, Suite 8309 Richmond Hill, Ontario Canada L4C 9T3  
Tel: +1-905-237-2004

**Renesas Electronics Europe Limited**  
Dukes Meadow, Millboard Road, Bourne End, Buckinghamshire, SL8 5FH, U.K  
Tel: +44-1628-651-700, Fax: +44-1628-651-804

**Renesas Electronics Europe GmbH**  
Arcadiastrasse 10, 40472 Düsseldorf, Germany  
Tel: +49-211-6503-0, Fax: +49-211-6503-1327

**Renesas Electronics (China) Co., Ltd.**  
Room 1709 Quantum Plaza, No.27 ZhichunLu, Haidian District, Beijing, 100191 P. R. China  
Tel: +86-10-8235-1155, Fax: +86-10-8235-7679

**Renesas Electronics (Shanghai) Co., Ltd.**  
Unit 301, Tower A, Central Towers, 555 Langao Road, Putuo District, Shanghai, 200333 P. R. China  
Tel: +86-21-2226-0888, Fax: +86-21-2226-0999

**Renesas Electronics Hong Kong Limited**  
Unit 1601-1611, 16/F., Tower 2, Grand Century Place, 193 Prince Edward Road West, Mongkok, Kowloon, Hong Kong  
Tel: +852-2265-6688, Fax: +852-2886-9022

**Renesas Electronics Taiwan Co., Ltd.**  
13F, No. 363, Fu Shing North Road, Taipei 10543, Taiwan  
Tel: +886-2-8175-9600, Fax: +886-2-8175-9670

**Renesas Electronics Singapore Pte. Ltd.**  
80 Bendemeer Road, Unit #06-02 Hyflux Innovation Centre, Singapore 339949  
Tel: +65-6213-0200, Fax: +65-6213-0300

**Renesas Electronics Malaysia Sdn.Bhd.**  
Unit 1207, Block B, Menara Amcorp, Amcorp Trade Centre, No. 18, Jln Persiaran Barat, 46050 Petaling Jaya, Selangor Darul Ehsan, Malaysia  
Tel: +60-3-7955-9390, Fax: +60-3-7955-9510

**Renesas Electronics India Pvt. Ltd.**  
No.777C, 100 Feet Road, HAL 2nd Stage, Indiranagar, Bangalore 560 038, India  
Tel: +91-80-67208700, Fax: +91-80-67208777

**Renesas Electronics Korea Co., Ltd.**  
17F, KAMCO Yangjae Tower, 262, Gangnam-daero, Gangnam-gu, Seoul, 06265 Korea  
Tel: +82-2-558-3737, Fax: +82-2-558-5338