

Description

The ISL5440XEVAL1Z evaluation board is designed to provide a quick and easy method for evaluating the ISL54400, ISL54401 and ISL54402 USB/Audio Switch ICs.

An evaluation kit consists of the following items: One Main Evaluation Board; Three μ TQFN to Dip Daughter Boards with mounted IC; ISL5440XEVAL1Z Evaluation Board User's Manual; ISL54400, ISL54401, ISL54402 Data Sheet; Main Evaluation Board Schematic.

The ISL54400EVAL1Z kit contains three daughter boards with the ISL54400 part.

The ISL54401EVAL1Z kit contains three daughter boards with the ISL54401 part.

The ISL54402EVAL1Z kit contains three daughter boards with the ISL54402 part.

The ISL5440x devices are unique ICs. To use this evaluation platform properly requires thorough knowledge of the operation of the ICs. Refer to the data sheet for an understanding of the functions and features of this family of devices. Studying a device's truth-table along with its pinout diagram on pages 2 and 3 of the data sheet is the best way to get a quick understanding of how a particular part in this family works.

A picture of the main evaluation board with IC to dip daughter board installed is shown in Figure 1. The main board has a 10 pin dip socket (U1) located in the center of the board. An IC is soldered onto a 10 pin dip daughter board that is plugged into the dip socket on the main board. Using daughter boards allow for the easy installation and removal of ICs.

The USB/Audio Switch ICs have two modes of operation called Audio mode and USB mode. The main evaluation board contains standard Audio and USB connectors to allow the user to easily interface with the IC to evaluate its functions, features, and performance in the two modes of operation. For example, when the board is properly powered, a headphone can be plugged into the headphone jack (J7) and a stereo source, such as a MP3 player, can be connected at the RCA connectors J3 (AUDIO LEFT) and J4 (AUDIO RIGHT) to play music through the audio switches of the IC. See Figure 2. You can then turn-off the audio source, remove the headphones, and attach a USB cable from a computer to USB connector J1. This will establish a connection from the computer through the USB switches of the IC to the USB device, that is connected at the USB connector J2, to send and receive data.

This application note will guide the user through the process of configuring and using the evaluation board to evaluate the ISL5440x family of devices in both the Audio mode and the USB mode.

Features

- Dip Socket For Quick Removal and Installation of DUTs
- Standard USB Connectors
- RCA Audio Input Jacks and Headphone Speaker Jack
- Convenient Test Points and Connections for Test Equipment

Picture of Evaluation Board (Top View)

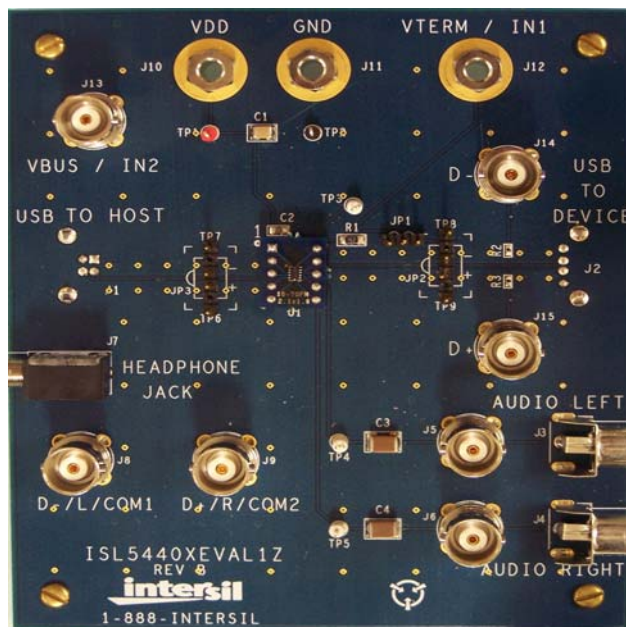


FIGURE 1. ISL5440XEVAL1 BOARD WITH IC DIP BOARD INSTALLED

Board Architecture/Layout

Basic Layout of Main Board

The basic layout of the main board is as follows: Refer to Figure 1.

Power and Ground connections are at the top of the board (J10 and J11).

Audio Source Inputs are at the lower right side of the board (J3 - J6). Audio outputs are at the lower left side of the board (J7, J8, J9). Connector J7 is a standard headphone jack for connecting a 32 Ω headphone.

USB connection to an upstream host controller (Computer) is made at connector J1, located on left under-side of the main board. USB connection to a downstream USB device is made at connector J2, located on right under-side of the main board.

Located in the center of the board is the DIP socket (U1). The IC to Dip Daughter Board plugs into this socket. The main board has a pin 1 label, to show how the IC daughter board should be oriented in the socket. The daughter board pin 1 indicator dot needs to be aligned with the main evaluation board dip socket labeled 1.

Power Supply

The ISL5440x devices require a DC power supply for proper operation. The DC power supply + and - terminals are connected at banana jacks J10 (VDD) and J11 (GND) located at the top of the board.

ISL54400 AND ISL54401

In Audio mode the V_{DD} power supply connected at banana jacks J10 (VDD) and J11 (GND) provides power to the part. A 2.7V to 3.6V DC power supply is needed for proper operation. The power supply should be capable of delivering 100 μ A of current.

In USB mode the V_{BUS} 5VDC voltage from the host USB controller (computer) connected at the USB connector J1 (USB to HOST) provides power to the part.

NOTE: For the ISL54400 and ISL54401 devices the V_{BUS} voltage needs to be at least 0.8V higher than the voltage at V_{DD} to turn the audio switches OFF and turn the USB switches ON. In a typical application, the V_{BUS} voltage from host controller will be in the range of 4.4V to 5.25V and the V_{DD} voltage will be in the range of 2.7V to 3.6V.

The ISL54400 VTERM does not output a voltage unless $V_{BUS} > V_{DD} + 0.8V$ and $V_{DD} > 2.5V$.

ISL54402

Power for the ISL54402 device is always provided by the DC voltage source connected at the J10 (VDD) and J11 (GND) Led jacks. The VDD voltage can be in the range of 1.8V to 5.5V. In a USB application, it should be set in the range of 2.7V to 5.5V and should be capable of delivering 100 μ A of current.

Logic Control

ISL54400 AND ISL54401

The state of the ISL54400 and ISL54401 devices is determined by the voltage at the V_{BUS} pin. If V_{BUS} is floating (no USB host controller connected at the J1 connector) the part will be in the Audio mode.

If V_{BUS} is greater than V_{DD} by 0.8V (USB host controller connected at the J1 USB connector) the part will be in the USB mode. In a typical application the V_{BUS} voltage from host controller will be in the range of 4.4V to 5.25V and the V_{DD} voltage will be in the range of 2.7V to 3.6V.

ISL54402

Logic control for the ISL54002 device is the same as a standard dual SPDT switch. The voltage applied at J13 (IN2) and J12 (IN1) determines whether the NOx (Digital) or NCx

(Audio) switches are ON or OFF. The ISL54002 logic levels are TTL compatible. See truth-table on page 3 of data sheet.

In a typical application, connector J12 and J13 should be connected together, allowing the logic control inputs to the IC to work in tandem. If you pull them LOW by connecting them to ground the NCx switches will be ON. If you pull them HIGH by connecting them to VDD or VBUS of the computer (In USB application) the NOx switches will be ON.

NOTE: The BNC connector J13 is wired in parallel with the VBUS line of the USB J1 connector. When you connect a USB cable from a computer to the J1 USB connector this will put the logic of pin 2 (IN2) of the IC at 5V. If connector J12 is connected to connector J13 then the logic of pin 10 (IN1) of the IC will also be at 5V and both USB switches will be ON. This is required for proper USB operation.

Audio Inputs

The evaluation board has two audio inputs labeled AUDIO LEFT (J3 or J5) and AUDIO RIGHT (J4 or J6). Each of these inputs have a BNC connector wired in parallel with a RCA jack connector. You can connect an audio source/generator at either the BNC connector or the RCA connector.

In a typical application, the left and right outputs of a stereo source, such as an MP3 player, would be connect to the RCA jacks J3 and J4, respectfully.

The internal audio switches of the ISL5440x family of devices were designed to pass a 0.6V_{RMS} signal across a 32 Ω headphone load with very low signal distortion. The audio source amplitude should be less than 1.75V_{pp} (0.62V_{rms}) for best performance. A 3V_{pp} signal is acceptable but performance will degrade.

The audio channels are AC coupled with 100 μ F capacitors. These caps remove any DC voltage from the audio signals and reference them to ground of the device.

NOTE: The audio switches are not bi-directional. The audio source needs to be connected at J3 or J5 and J4 or J6. Do not try to apply an audio source at the J8 and J9 BNC connectors on left side of the board and loads at J3 - J6 on right side of the board.

NOTE: When in USB mode the audio source needs to be in a high impedance state so it will not interfere with the USB signal. Since the audio source inputs are AC coupled on the eval board, simply turning the audio source OFF will isolate it from interfering with the USB signal.

Audio Outputs

The evaluation board has a standard headphone jack labeled HEADPHONE JACK (J7). A 32 Ω stereo headphone should be plugged into this jack. The BNC connector J8 (D-/L/COM1) is in parallel with the audio left signal of the headphone jack. The BNC connector J9 (D+/R/COM2) is in parallel with the audio right signal of the headphone jack. These BNC connectors can be used to connect resistive

loads and/or test equipment to evaluate the performance of the IC.

USB Connections

A “B” type USB receptacle labeled USB TO HOST (J1) is located on the left under-side of the board. This receptacle should be connected, using a standard USB cable, to the up-stream USB host controller which is usually a computer. When this connection is made, an ISL54400 or ISL54401 device will sense the V_{BUS} voltage from the host controller and go into USB mode. The USB switches will be turned ON and the IC will get its power from the VBUS line.

When evaluating the ISL54402 in a USB application J13 needs to be connected to J12 for proper operation. When the USB cable from the computer is connected at J1 the NOx switches will both turn ON.

An “A” type USB receptacle labeled USB TO DEVICE (J2) is located on the right under-side of the board. This receptacle should be connected to the USB device using a standard USB cable or, if possible, plug the USB device directly into this receptacle. In USB mode the USB host controller and USB device will be connected through the internal USB switches of the IC. Unlike the audio switches, the USB switches are bi-directional which allow the host (computer) and downstream USB device to both send and receive data.

Note: Before connecting the USB host controller at connector J1 the headphones must be removed from the headphone speaker jack J7. This will prevent the audio load from interfering with USB signal transmission. The main purpose of the ISL54400 and ISL54401 devices is to allow the use of a common USB and Audio Headphone Connector in Personal Media Players and other portable battery powered equipment. Either a headphone will be in the common connector to play music or a USB cable from a computer will be in the common connector to transmit digital data, such as music, into the memory of the Media Player.

The BNC connector J8 (D-/L/COM1) is in parallel with the D- line of the J1 USB connector. The BNC connector J9 (D+/R/COM2) is in parallel with the D+ line of the J1 USB connector. The BNC connector J13 (VBUS/IN2) is in parallel with the V_{BUS} line of the J1 USB connector. The BNC connector J14 (D-) is in parallel with the D- line of the J2 USB connector. The BNC connector J15 (D+) is in parallel with the D+ line of the J2 USB connector. These BNC connectors can be used to connect test equipment to evaluate the performance of the IC. The board has 0 Ω resistors R2, R3, R4 and R5 that can be de-populated to disconnected BNC jacks J7, J8, J9, J14, J15 and headphone jack J7 from the switch signal path. See schematic for which resistors go to which connectors.

VTERM Connection (ISL54400 only)

To use VTERM output of the ISL54400 part and the 1.5k Ω resistor (R1) on the board will require a jumper installed at JP1. For a USB full-speed device (12Mb/s) connect jumper from middle post to left post of JP1. For a USB low-speed device (1.5Mb/s) connect jumper from middle post to right post of JP1.

NOTE: V_{TERM} is high impedance if VBUS is floating or lower in voltage than the voltage at VDD (J10 and J11). VTERM will output a voltage in the range of 3.0V to 3.6V when V_{BUS} voltage is >4.4V and V_{DD} is >2.5V.

If the VTERM output is not going to be used, leave the JP1 jumper unpopulated. The jumper should also be unpopulated when evaluating the ISL54401 and ISL54402 ICs.

Board Component Definitions

| DESIGNATOR | DESCRIPTION |
|-------------------------|--|
| U1 | 10 Ld Dip Socket |
| J1 | “B” type USB Receptacle |
| J2 | “A” type USB Receptacle |
| J3, J5 | Left Stereo Audio Input |
| J4, J6 | Right Stereo Audio Input |
| J7 | Headphone Speaker Jack |
| J8 | D-/L/COM1 BNC Connector |
| J9 | D+/L/COM2 BNC Connector |
| J10 | VDD Positive Connection |
| J11 | VDD Negative Connection |
| J12 | VTERM/IN1 |
| J13 | VBUS/IN2 |
| J14 | D- BNC Connector |
| J15 | D+ BNC Connector |
| JP1 | Jumper to Connect VTERM through 1.5k Ω resistor to either D+ or D- Line |
| JP2 | D- and D+ Differential Test Probe Connection USB Host (COM) Side of Switch |
| JP3 | D- and D+ Differential Test Probe Connection USB Device Side of Switch |
| TP1 | VDD Test Point |
| TP2, TP6, TP7, TP8, TP9 | Ground Test Point |
| TP3 | VBUS Test Point |
| TP4 | Audio Left Input Test Point |
| TP5 | Audio Right Input Test Point |

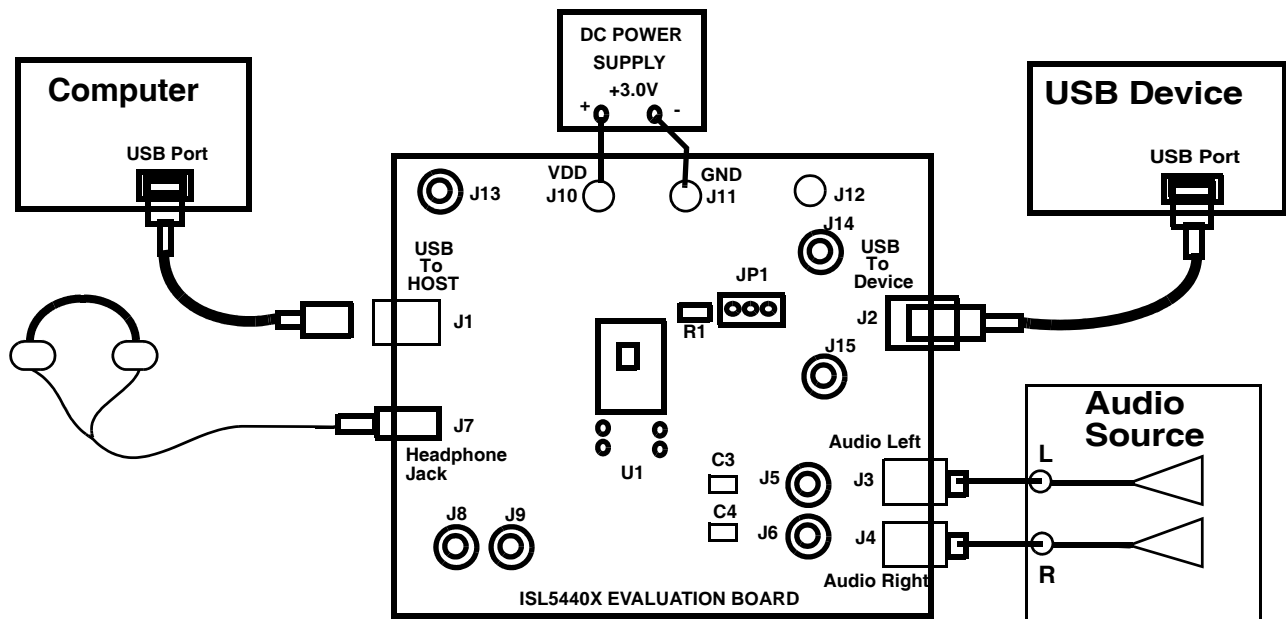


FIGURE 2. BASIC EVALUATION TEST SETUP BLOCK DIAGRAM

Using the Board (Refer to Figure 2)

Lab Equipment

The equipment, external supplies and signal sources needed to operate the board are listed below:

1. +2.7V to 5.5V DC Power Supply
2. Stereo Audio Source (MP3/Radio/CD Player) or Audio Generator
3. 32 Ω Headphone Set or Audio Analyzer/Oscilloscope
4. Two Standard USB Cables
5. Computer with USB port
6. USB Device (i.e. Printer, USB Memory Stick, MP3 Player with USB Port)

Initial Board Setup Procedure

1. Insert the daughter board with mounted IC into the dip socket on the main board. Verify that the daughter board is oriented in the socket correctly. The pin 1 dot on the daughter board needs to be lined up with the pin 1 designator on the main evaluation board.
2. If evaluating the ISL54400 part and you want to use the VTERM output and the 1.5k Ω resistor on the board install a jumper at JP1. For a USB full-speed device (12Mb/s) connect jumper from middle post to left post. For a USB low-speed device (1.5Mb/s) connect jumper from middle post to right post. If the VTERM output is not going to be used leave the JP1 jumper un-populated. The jumper

should also be un-populated when evaluating the ISL54401 and ISL54402 ICs.

3. Attach the main evaluation board to a DC power supply at J10 (VDD) and J11 (GND). Positive terminal at J10 and negative terminal at J11. The supply should be capable of delivering 2.7V to 3.6V and 100 μ A of current. Set the supply voltage to 3V.
4. Connect the stereo audio source left channel to J3 RCA connector or J5 BNC connector and right channel to J4 RCA connector or J6 BNC connector.
5. Connect the USB device to the USB "B" type receptacle, J2 (USB TO DEVICE).

ISL54400 and ISL54401 Audio Mode Operation

1. Install 32 Ω headphone in the headphone jack, (J7). No USB cable should be connected at the J1 (USB TO HOST) connector. You will now be in Audio mode (1 Ω audio switches are ON and power to IC is from V_{DD} supply).
2. Turn the audio source ON. You should hear the music in the headphones.
3. You can observe the audio signals on an oscilloscope or audio analyzer by using the J8 and J9 BNC connectors. Connect to J8 for left audio and J9 for right audio. The board also contains varied test points (TP1-TP9 and JP2-JP3) for making test equipment connections. Refer to eval board schematic and Board Component Definitions on page 3 for definition of the various test points.

ISL54400 and ISL54401 USB Mode Operation

1. Turn OFF audio stereo source.
2. Remove headphone from J7 (Headphone Jack).
3. Connect USB cable from host (PC computer) to the USB "A" type receptacle, J1 (USB TO HOST). You will now be in USB mode (4Ω USB switches are ON and power to IC is from V_{BUS} line from the USB host).
4. You should now be able to send and receive data between the host and USB device.
5. You can observe the D- and D+ USB digital signals on an oscilloscope or other test equipment by connecting to the J8, J14, J9 and J15 BNC connectors. Connect to J8/J14 for D- signal and to J9/J15 for D+ signal. The V_{BUS} voltage from the host can be monitored by connecting a voltmeter at the J13 BNC connector. The board also contains varied test points (TP1-TP9 and JP2-JP3) for making test equipment connections. Refer to eval board schematic and Board Component Definitions on page 3 for definition of the various test points.
6. If using VTERM output from ISL54400 you can monitor this voltage by connecting a voltmeter at the banana jack J12. In audio mode VTERM should be floating. In USB mode it should be outputting a voltage between 3.0V and 3.6V. NOTE: For the IC to output 3.0V to 3.6V V_{BUS} voltage must be between 4.4V and 5.25V and V_{DD} must be at least 2.5V.
7. If you disconnect the USB cable from J1, the IC will return to Audio mode. You can now plug the headphone set into the headphone jack and turn the audio source ON to once again play music.

ISL54402 Audio Mode Operation

1. Install 32Ω headphone in the headphone jack (J7). No USB cable should be connected at the J1 (USB TO HOST) connector.
2. Connect BNC connector J13 to the banana jack J12. Then connect J12 to ground. This will put the logic control pins (IN1 and IN2) of the IC at ground. You will now be in Audio mode (1Ω audio switches are ON).

3. Turn the audio source ON. You should hear the music in the headphones.
4. You can observe the audio signals on an oscilloscope or audio analyzer by using the J8 and J9 BNC connectors. Connect to J8 for left audio and J9 for right audio. The board also contains varied test points (TP1-TP9 and JP2-JP3) for making test equipment connections. Refer to eval board schematic and Board Component Definitions on page 3 for definition of the various test points.

ISL54402 USB Mode Operation

1. Turn OFF audio stereo source.
2. Remove headphone from J7 (Headphone Jack).
3. Connect BNC connector J13 to the banana jack J12. When the USB cable from the computer is connected in to J1 (USB TO HOST) the V_{BUS} voltage will put the logic control pins (IN1 and IN2) of the IC at 5V. You will now be in USB mode (4Ω digital switches are ON).
4. Connect USB cable from host (PC computer) to the USB "A" type receptacle, J1 (USB TO HOST). You will now be in USB mode (4Ω USB switches).
5. You should now be able to send and receive data between the host and USB device.
6. You can observe the D- and D+ USB digital signals on an oscilloscope or other test equipment by connecting to the J8, J14, J9 and J15 BNC connectors. Connect to J8/J14 for D- signal and to J9/J15 for D+ signal. The V_{BUS} voltage from the host can be monitored by connecting a voltmeter at the J13 BNC connector. The board also contains varied test points (TP1-TP9 and JP2-JP3) for making test equipment connections. Refer to eval board schematic and Board Component Definitions on page 3 for definition of the various test points.
7. If you disconnect the USB cable from J1 and connect J12 and J13 to ground the IC will return to Audio mode. You can now plug the headphone set into the headphone jack and turn the audio source ON to once again play music.

Board Schematics/Layout/BOM

The schematics, board plots, and bill of materials can be obtained by contacting the Intersil at 1-888-INTERSIL.

All Intersil U.S. products are manufactured, assembled and tested utilizing ISO9000 quality systems. Intersil Corporation's quality certifications can be viewed at www.intersil.com/design/quality

Intersil products are sold by description only. Intersil Corporation reserves the right to make changes in circuit design, software and/or specifications at any time without notice. Accordingly, the reader is cautioned to verify that data sheets are current before placing orders. Information furnished by Intersil is believed to be accurate and reliable. However, no responsibility is assumed by Intersil or its subsidiaries for its use; nor for any infringements of patents or other rights of third parties which may result from its use. No license is granted by implication or otherwise under any patent or patent rights of Intersil or its subsidiaries.

For information regarding Intersil Corporation and its products, see www.intersil.com