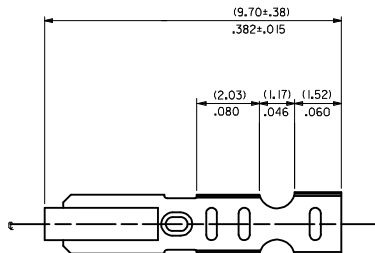
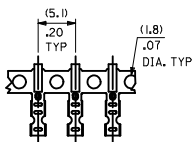
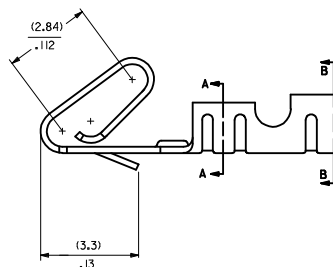
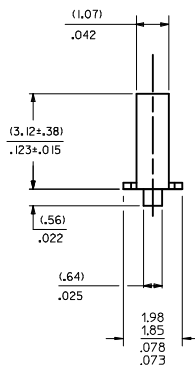
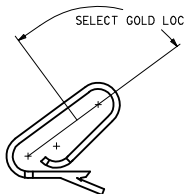


CARRIER VIEW

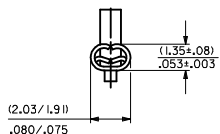


- NOTES:
- MATERIAL:  
(0.20)/.008 THICK BRASS
  - FINISH:  
122 - OVERALL TIN: (0.00381)/.000150 MIN. TIN OVER (0.00076)/.000030 MIN NICKEL  
154 - OVERALL TIN: (0.00254)/.000100 MIN. TIN OVER (0.00127)/.000050 MIN NICKEL  
P909 - OVERALL HOT TIN DIP: (0.00254)/.000100 MIN.  
550 - SELECT GOLD: (0.000381)/.000015 MIN. OVERALL GOLD FLASH: (0.00005)/.000002 MIN. OVERALL NICKEL UNDERPLATE: (0.00076)/.000030 MIN.  
555- SELECT GOLD (0.000381)/.000015 MIN. OVERALL NICKEL UNDERPLATE: (0.00076)/.000030  
558 - SELECT GOLD: (0.00076)/.000030 MIN. OVERALL GOLD FLASH: (0.00005)/.000002 MIN. OVERALL NICKEL UNDERPLATE: (0.00127)/.000050 MIN.
  - PRODUCT SPEC: PS-10-07
  - PACKAGING SPECIFICATION: LOOSE TERMINALS: PER FK-2759-001 CHAIN FORM TERMINALS: PER FK-2759-002
  - CRIMP IS FOR 22-30 GA WIRE WITH (1.57)/.062 DIA INSULATION MAX.
  - INSERTION FORCE OF TERMINAL INTO (2.54)/.100 CENTERLINE CONNECTOR IS 2.5 LBS. MAX
  - TERMINAL RETENTION IN HOUSING IS 26.7N / 6LBS MIN. WHEN PULLED AT THE RATE OF (25.4MM) / 1 INCH PER MINUTE.
  - DIMENSIONS GIVEN ACROSS CENTERLINES ARE SYMMETRICAL ABOUT THOSE CENTERLINES WITHIN HALF THE TOTAL TOLERANCE.
  - THIS PART CONFORMS TO CLASS B REQUIREMENTS OF COSMETIC SPECIFICATION PS-45499-002.

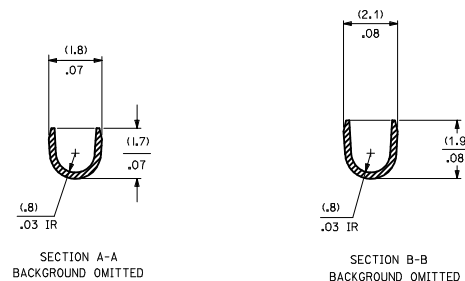
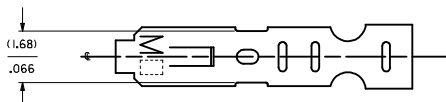
SELECT GOLD LOCATION



CRIMP DETAIL



CRIMPED TERMINAL 2759-(P909)C IS USED WITHOUT WIRE AND IS INSERTED INTO HOUSING TO PROVIDE TENSION WHEN ASSEMBLED TO HEADERS DURING SHIPMENT.



SECTION A-A  
BACKGROUND OMITTED

SECTION B-B  
BACKGROUND OMITTED

2759-(\*\*\*)\*

- FORM
- L=LOOSE
  - C=LOOSE CRIMPED
  - A=CHAIN, PER WINDING DETAIL "A"
  - B=CHAIN, PER WINDING DETAIL "B"
- PLATING
- SEE NOTE 2

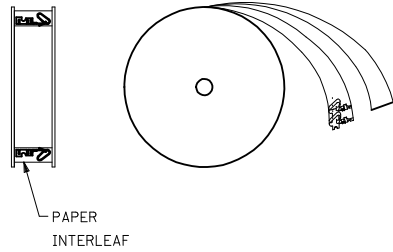
ADD WINDING DETAIL EEC NO. UCF2014-4131 DRAWN BY: CHYKONGUEN CHECKED BY: CHYKONGUEN APPR:FSMTH DATE: 2014/04/07 DATE: 2014/04/08 DATE: 2014/04/21	QUALITY SYMBOLS ∇=0 ∇=0 ∇=0	GENERAL TOLERANCES (UNLESS SPECIFIED)		DIMENSION STYLE MM/IN	SCALE	DESIGN UNITS INCH	THIRD ANGLE PROJECTION	
		4 PLACES ±.010 3 PLACES ±.010 2 PLACES ±0.25 ±.014 1 PLACE ±0.36 ±.014 0 PLACE ±.010 ±.014	mm INCH	DRAWN BY: SAMIEC DATE: 07/28/87	CHECKED BY: PATEL DATE: 07/28/87	CRIMP TERMINAL 22-30 GA WIRE		
		ANGULAR ±1/2° DRAFT WHERE APPLICABLE MUST REMAIN WITHIN DIMENSIONS	MATERIAL NO. SEE CHART	APPROVED BY: FSMITH DATE: 2012/03/20	DOCUMENT NO. SD-2759	SHEET NO. 1 OF 2		

20 19 18 17 16 15 14 13 12 11 10 9 8 7 6 5 4 3 2 1

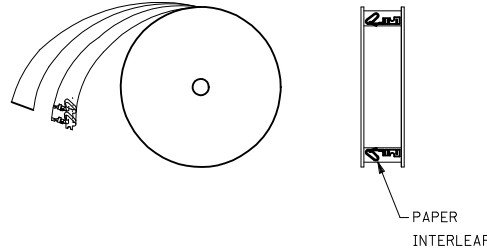
2759-(\*\*\*)\*

PART NO.	ENG. NO.
08-55-0101	2759-(555)B
08-55-0102	2759-(555)L
08-55-0126	2759-(555)A
08-56-0109	2759-(550)B
08-56-0110	2759-(550)L
08-50-0113	2759-(P909)B
08-50-0114	2759-(P909)L
08-50-0124	2759-(P909)C
08-51-0108	2759-(122)B
	2759-(122)L
08-50-0274	2759-(P909)B
08-50-0273	2759-(P909)A
08-55-0130	2759-(558)B
08-55-0131	2759-(558)L
08-50-0160	2759-(154)L
08-50-0159	2759-(154)B

WINDING DETAIL "A"



WINDING DETAIL "B"



SEE SHEET 1 SEC NO: UCP2014-431 DRAWN BY: DRYANKUPPER 2014/04/07 CHECKED BY: CHYKONGUYEN 2014/04/08 APPROVED BY: APPRESMITH 2014/04/21	QUALITY SYMBOLS ▽=0 ▽=0 ▽=0	GENERAL TOLERANCES (UNLESS SPECIFIED)		DIMENSION STYLE	SCALE	DESIGN UNITS	THIRD ANGLE PROJECTION
				MM/IN	1:1	INCH	
		4 PLACES ±.005 ±.005	3 PLACES ±.010 ±.010	2 PLACES ±0.25 ±.014	1 PLACE ±0.36 ±.---	0 PLACE ±.---	DRAWN BY: SAMIEC DATE: 07/28/87 CHECKED BY: PATEL DATE: 07/28/87 APPROVED BY: FSMITH DATE: 2012/03/20
		ANGULAR ±1/2°	DRAFT WHERE APPLICABLE MUST REMAIN WITHIN DIMENSIONS		MATERIAL NO.	DOCUMENT NO.	SHEET NO.
AWZ			SEE CHART			SD-2759	2 OF 2
THIS DRAWING CONTAINS INFORMATION THAT IS PROPRIETARY TO MOLEX INCORPORATED AND SHOULD NOT BE USED WITHOUT WRITTEN PERMISSION							

19 18 17 16 15 14 13 12 11 10 9 8 7 6 5 4 3 2 1