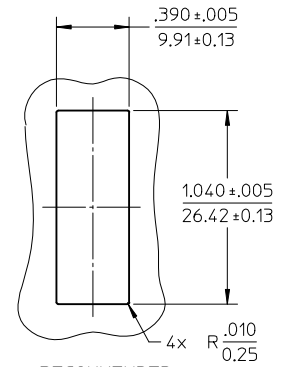
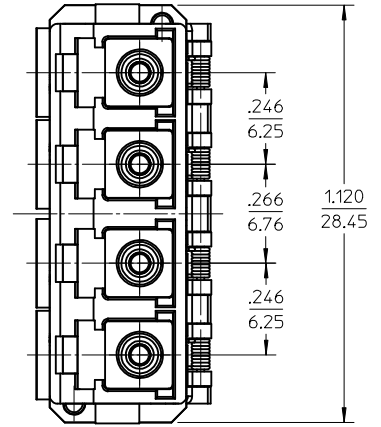
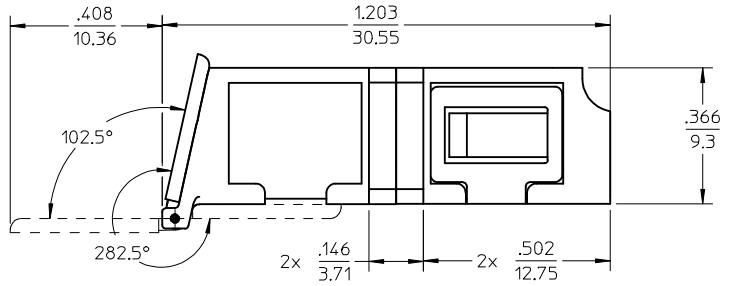
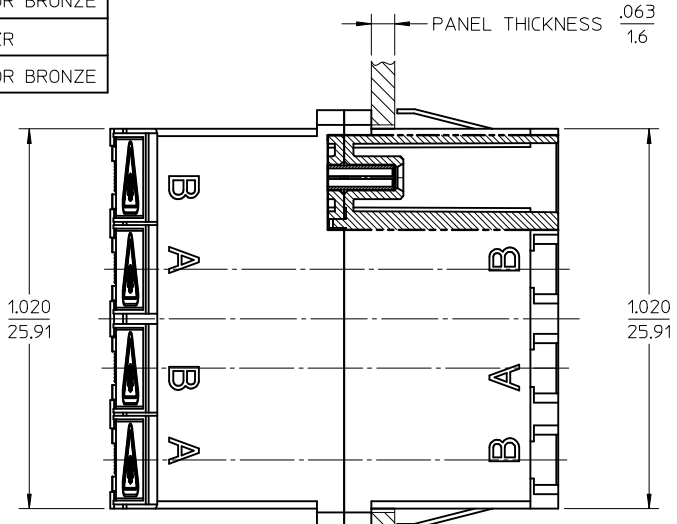
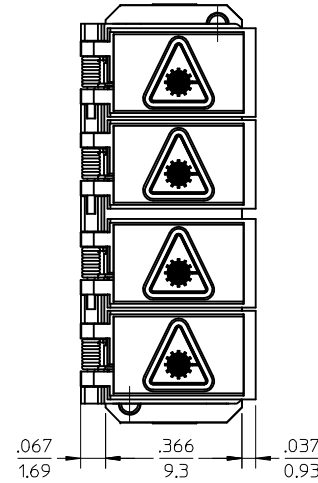
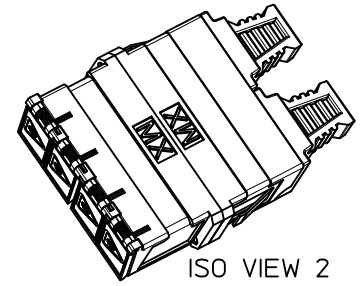


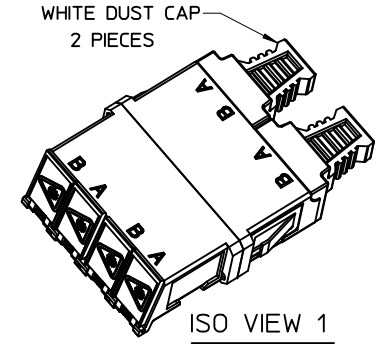
10	9	8
LC QUAD ADAPTER P/N	LC QUAD ADAPTER COLOR	SPLIT SLEEVE MATERIAL
106123-0400	BLUE	ZR
106123-1400	BEIGE	PHOSPHOR BRONZE
106123-2400	GREEN	ZR
106123-3400	AQUA	PHOSPHOR BRONZE



RECOMMENDED MOUNTING PATTERN
SCALE 15:1



ISO VIEW 2
SCALE 15:1



ISO VIEW 1
SCALE 15:1

WHITE DUST CAP
2 PIECES

- NOTES:
- ALL DIMENSIONS ARE FOR REFERENCE.
 - DUST CAPS NOT SHOWN ON FRONT, BOTTOM AND RIGHT VIEW.
 - LC QUAD ADAPTER HAS SC DUPLEX ADAPTER FOOTPRINT.

ENTER DESCRIPTION EC NO: MF2013-0549 DRAWN: KPEVZNER 2013/03/06 CHKD: APPR: IGUMIN 2013/03/07 A1	QUALITY SYMBOLS $\nabla F=0$ $\nabla F=0$ $\nabla F=0$	GENERAL TOLERANCES (UNLESS SPECIFIED)		DIMENSION STYLE IN/MM	SCALE 3:1	DESIGN UNITS INCH	THIRD ANGLE PROJECTION		
		4 PLACES ± --- ± --- 3 PLACES ± --- ± --- 2 PLACES ± --- ± --- 1 PLACE ± --- ± --- 0 PLACE ± ±	mm INCH	DRAWN BY DATE PGIBLIN 2005/11/21	CHECKED BY DATE	TITLE LC QUAD ADAPTER WITH SHUTTERS SMALL FLANGE, SNAP MOUNT molex			
		ANGULAR ± --- ° DRAFT WHERE APPLICABLE MUST REMAIN WITHIN DIMENSIONS		MATERIAL NO. SEE TABLE	APPROVED BY DATE	DOCUMENT NO. SD-106123-X400	SHEET NO. 1 OF 1		
		THIS DRAWING CONTAINS INFORMATION THAT IS PROPRIETARY TO MOLEX INCORPORATED AND SHOULD NOT BE USED WITHOUT WRITTEN PERMISSION							