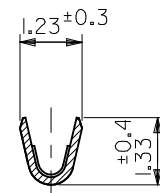
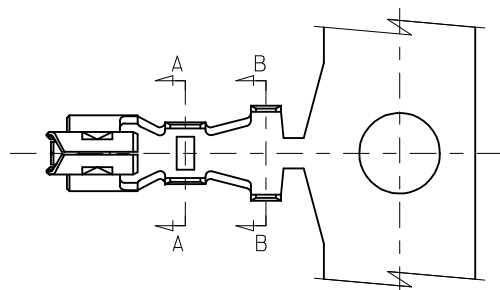
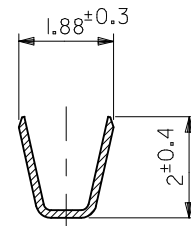


注記

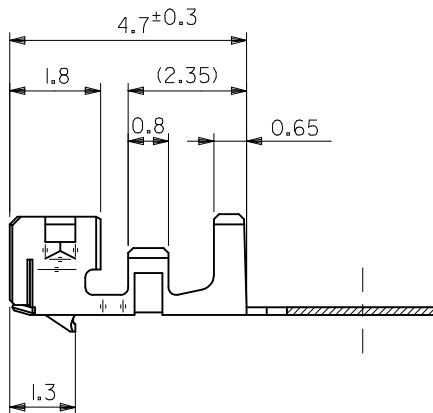
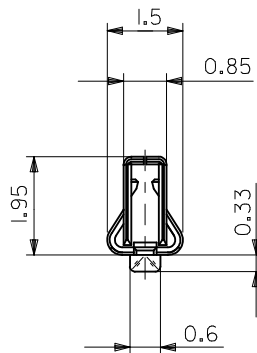
- 適用ハウジング: 51065-\*\*\*00  
 APPLICABLE HOUSING 51089-\*\*\*05  
 51090-\*\*\*00
- 材質: MATERIAL  
 リン青銅  
 PHOSPHOR BRONZE  
 錫メッキ  
 PRE-TINNED  
 $t=0.152$



SECT. A-A



SECT. B-B



50212-8100	バラ状
50212-8000	連鎖状
MATERIAL NO.	端子形状

適用電線範囲 WIRE RANGE	AWG #24~#30
被覆外径 INS.RANGE	φ1.4MAX.

REVISED EC NO: J2009-2125 DRWN: CARIZONO 2009/03/25 CHKD: T. HARUYAMA 2009/04/07 APPR: NUKITA 2009/04/08	GENERAL TOLERANCES (UNLESS SPECIFIED)		DIMENSION STYLE MM ONLY	SCALE 10:1	DESIGN UNITS METRIC	THIRD ANGLE PROJECTION
	10 UNDER	±0.2	DRAWN BY C. ARIZONO	DATE 09/03/19	TITLE NEW 2.0 WIRE TO BOARD CONN. CRIMP RECEPTACLE	
	10 OVER 30 UNDER	±0.25	CHECKED BY T. HARUYAMA	DATE 09/03/19	MOLEX INCORPORATED	
	30 OVER	±0.3	APPROVED BY N. UKITA	DATE 09/03/19	MATERIAL NO. SEE CHART	DOCUMENT NO. SD-50212-001
DESCRIPTION	ANGULAR ±3°	DRAFT WHERE APPLICABLE MUST REMAIN WITHIN DIMENSIONS	SIZE A3	THIS DRAWING CONTAINS INFORMATION THAT IS PROPRIETARY TO MOLEX INCORPORATED AND SHOULD NOT BE USED WITHOUT WRITTEN PERMISSION		