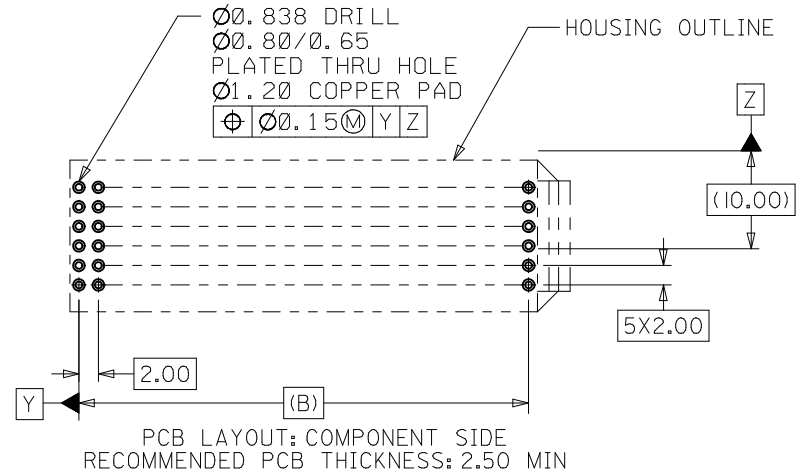
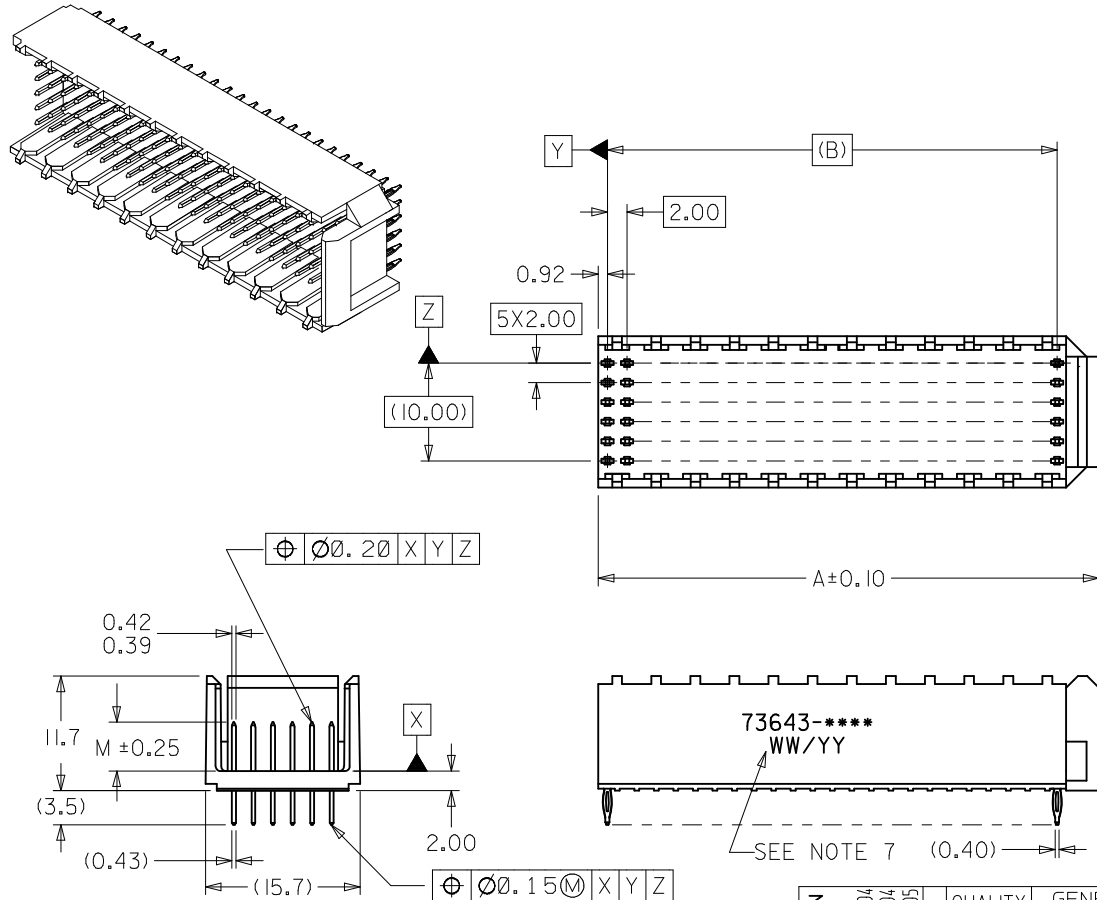


NOTES:

1. MATERIALS: HOUSING - LIQUID CRYSTAL POLYMER (LCP)  
GLASS-FILLED, UL 94V-0, COLOR: BLACK.  
TERMINAL - PHOSPHOR BRONZE.
2. FINISH: SELECTIVE GOLD (Au) IN CONTACT AREA, 0.76 MICROMETERS MINIMUM THICKNESS;  
NICKEL (Ni) AND GOLD FLASH OVERALL.  
SELECTIVE GOLD (Au) IN CONTACT AREA, 0.76 MICROMETERS MINIMUM THICKNESS;  
SELECTIVE MATTE TIN (Sn) ON IN TAIL AREA.  
NICKEL (Ni) OVERALL.
3. THIS PART CONFORMS TO MOLEX PRODUCT SPECIFICATION PS-73670-9999.
4. FOR MIXED CONTACT MATING LENGTHS, CONSULT FACTORY FOR AVAILABILITY.
5. DIMENSIONS ARE IN MILLIMETERS.
6. PACKAGE PER 70873-0818.
7. PARTS MARKED WITH PART NUMBER AND DATE CODE ON EITHER SIDE.  
APPROXIMATELY WHERE SHOWN.



<b>LEAD FREE CONVERSION</b> EC NO: UCP2013-3253 DRAWN: RWHIPPLE 2013/02/04 CHKD: HMOLFE 2013/02/04 APPR: SMILLER 2013/08/05	QUALITY SYMBOLS ▽=0 ▽=0 ▽=0	GENERAL TOLERANCES (UNLESS SPECIFIED)		DIMENSION STYLE <b>MM ONLY</b>		SCALE <b>2:1</b>	DESIGN UNITS <b>METRIC</b>	THIRD ANGLE PROJECTION	
		4 PLACES ± --- ± ---	mm INCH	DRAWN BY RWHIPPLE	DATE 2013/02/04	TITLE <b>SALES ASSEMBLY HDM BACKPLANE MODULE END WALL OPTION</b>			
		3 PLACES ± --- ± ---		CHECKED BY SMR/CAB	DATE 96/12/18	<b>molex</b>			
		2 PLACES ± .05 ± ---		APPROVED BY SMILLER	DATE 2013/08/05	MATERIAL NO. <b>SEE SHEET 2</b>	DOCUMENT NO. <b>SDA-73643-****</b>	SHEET NO. 1 OF 2	
		ANGULAR ±1/2° DRAFT WHERE APPLICABLE MUST REMAIN WITHIN DIMENSIONS		THIS DRAWING CONTAINS INFORMATION THAT IS PROPRIETARY TO MOLEX INCORPORATED AND SHOULD NOT BE USED WITHOUT WRITTEN PERMISSION					

10 9 8 7 6 5 4 3 2 1

MATERIAL NUMBER	NUMBER OF SIGNAL CONTACTS	PLATING	DIM "A"	DIM "B"	DIM "M"
73643-0000	72	SELECTIVE GOLD/GOLD FLASH	27.60	22.00	5.00
73643-0100	72	SELECTIVE GOLD/GOLD FLASH	27.60	22.00	5.50
73643-0200	72	SELECTIVE GOLD/GOLD FLASH	27.60	22.00	6.00
73643-1000	144	SELECTIVE GOLD/GOLD FLASH	51.60	46.00	5.00
73643-1100	144	SELECTIVE GOLD/GOLD FLASH	51.60	46.00	5.50
73643-1200	144	SELECTIVE GOLD/GOLD FLASH	51.60	46.00	6.00
73643-2000	72	* SELECTIVE GOLD/SELECTIVE MATTE TIN	27.60	22.00	5.00
73643-2100	72	* SELECTIVE GOLD/SELECTIVE MATTE TIN	27.60	22.00	5.50
73643-2200	72	* SELECTIVE GOLD/SELECTIVE MATTE TIN	27.60	22.00	6.00
73643-3000	144	* SELECTIVE GOLD/SELECTIVE MATTE TIN	51.60	46.00	5.00
73643-3100	144	* SELECTIVE GOLD/SELECTIVE MATTE TIN	51.60	46.00	5.50
73643-3200	144	* SELECTIVE GOLD/SELECTIVE MATTE TIN	51.60	46.00	6.00

\* FORMERLY TIN/LEAD

SEE SHEET 1 EC NO: UCP2013-3253 DRWN:RWHIPPLE 2013/02/04 CHKD:MMOLFE 2013/02/04 APPR:SMILLER 2013/08/05	QUALITY SYMBOLS	GENERAL TOLERANCES (UNLESS SPECIFIED)	DIMENSION STYLE MM ONLY	SCALE 1:1	DESIGN UNITS METRIC	THIRD ANGLE PROJECTION
	▽=0	4 PLACES ± --- ± ---	mm INCH	DRAWN BY DATE RWHIPPLE 2013/02/04	TITLE SALES ASSEMBLY HDM BACKPLANE MODULE END WALL OPTION	
	▽=0	3 PLACES ± --- ± ---		CHECKED BY DATE SMR/CAB 96/12/18		
	▽=0	2 PLACES ± .05 ± ---		APPROVED BY DATE SMILLER 2013/08/05	DOCUMENT NO. SDA-73643-****	
	1 PLACE ± 0.10 ± ---	ANGULAR ±1/2° DRAFT WHERE APPLICABLE MUST REMAIN WITHIN DIMENSIONS	SEE CHART	SHEET NO. 2 OF 2		
	0 PLACE ± --- ± ---		SIZE B	THIS DRAWING CONTAINS INFORMATION THAT IS PROPRIETARY TO MOLEX INCORPORATED AND SHOULD NOT BE USED WITHOUT WRITTEN PERMISSION		

9 8 7 6 5 4 3 2 1