

NB6N239SMNEVB

NB6N239SMNEVB Evaluation Board User's Manual



ON Semiconductor®

<http://onsemi.com>

EVAL BOARD USER'S MANUAL

Description

The NB6N239S Evaluation Board was designed to provide a flexible and convenient platform to quickly evaluate, characterize and verify the performance and operation of the NB6N239S. This user's manual provides detailed information on board contents, layout and its use. It should be used in conjunction with the NB6N239S data sheet: (www.onsemi.com).

The NB6N239S is a differential Receiver to differential LVDS Clock Divider. The board features Output Enable control of the Outputs.

Board Features

- Accommodates the electrical characterization of the NB6N239S (and the NB6L239)
- Selectable Jumper for the V_T pin, minimizing cabling
- CLK/ $\overline{\text{CLK}}$ input and QA/ $\overline{\text{QA}}$ and QB/ $\overline{\text{QB}}$ output pins are accessed via SMA connectors
- $\overline{\text{MR}}$, $\overline{\text{EN}}$ and Clock Divide Select pins are accessed via SMA Connectors or by the Logic Switches
- Convenient and Compact Board Layout
- 3.3 V Power Supply Operating Range

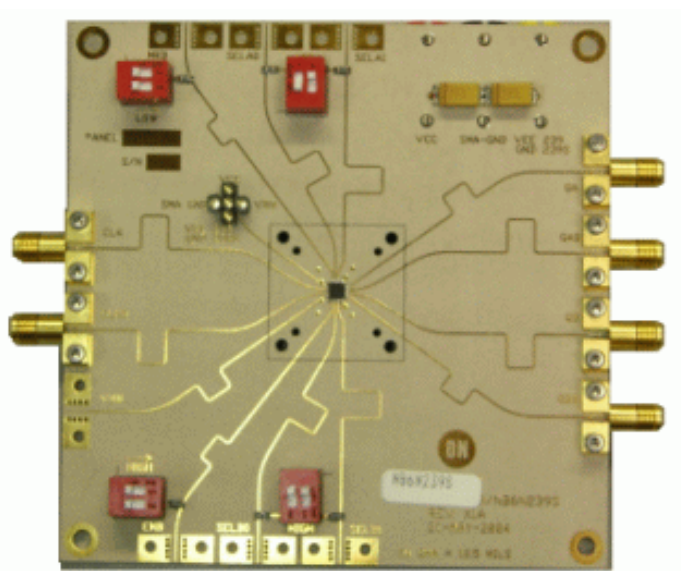
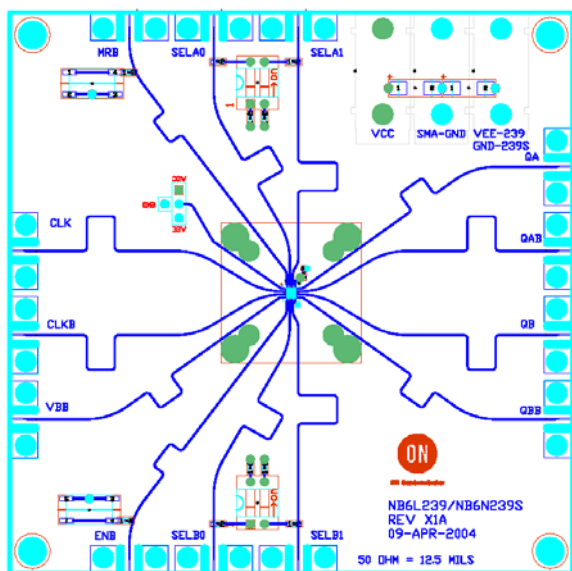


Figure 1. Evaluation Board

NB6N239SMNEVB

PROCEDURE

Lab Setup and Measurement Procedure

Equipment Used

- Agilent Signal Generator #8133A
- Tektronix TDS8000 Oscilloscope
- Agilent #6624A DC Power Supply
- Digital Voltmeter
- Matched High-Speed Cables with SMA Connectors

Power Supply Connections

The NB6N239S has a positive supply pin, V_{CC} , and a negative supply pin, GND .

Power supply terminals V_{CC} , GND and $SMAGND$ are provided. The $SMAGND$ terminal is primarily used for the NB6L239; for the NB6N239S, it can be connected to GND .

Table 1. POWER SUPPLY CONFIGURATIONS

Device Pin	Power Supply Connector Color	Single Power Supply
V_{CC}	RED	$V_{CC} = +3.3\text{ V}$
–	BLACK – SMAGND	
$GND - 239S$	BLACK	$GND = 0\text{ V}$

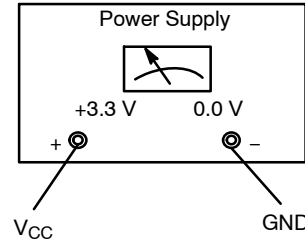


Figure 2. Power Supply Connections

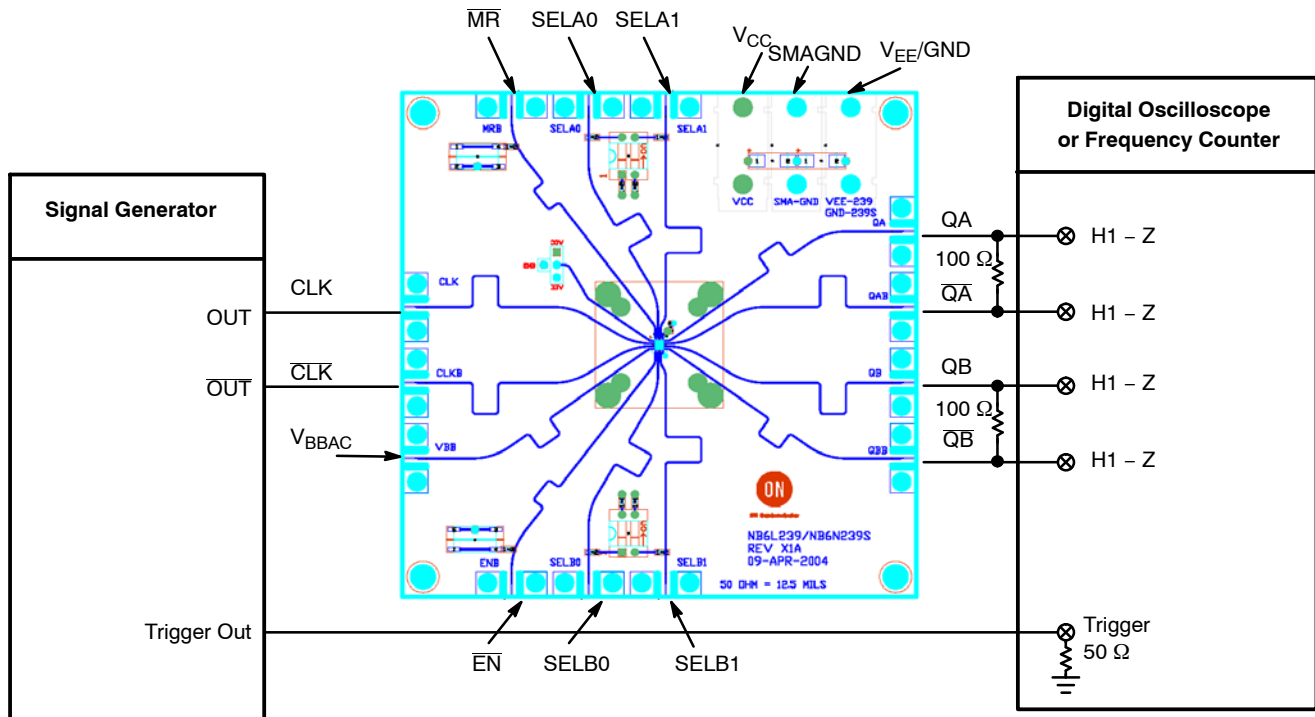


Figure 3. Evaluation Board

Board Layout

The evaluation board is constructed with Rogers material with $50\ \Omega$ trace impedances designed to minimize noise, achieve high bandwidth and minimize crosstalk.

Layer Stack

- L1 Signal (top) (Rogers)
- L2 SMA Ground

- L3 V_{CC} and GND (positive and negative power supply)
- L4 Signal (bottom)

Control and Select Pins

The Control / Select pins, \overline{MR} , $SELX_n$ and \overline{EN} , can be accessed via the appropriate SMA connector. These pins can also be manually controlled by using the H/L switch. When

NB6N239SMNEVB

using the switch, the SMA connector should be left open. When using the SMA connector, the switch must be in the “OPEN” position.

The SELXn and $\overline{\text{EN}}$ device pins have internal pulldown resistors. The NB6N239S evaluation board was designed to take advantage of this attribute. When the SELXn and $\overline{\text{EN}}$ switch is in the logic LOW position, the input pin “floats” to a logic LOW owing to the pulldown resistor; a logic LOW voltage is not forced on the pin. In the HIGH position, the switch forces the SELXn and $\overline{\text{EN}}$ pin to the positive power supply rail, a logic HIGH.

The $\overline{\text{MR}}$ device pin has an internal pullup resistor. When the $\overline{\text{MR}}$ switch is in the logic HIGH position, the input pin “floats” to a logic HIGH owing to the pullup resistor; a logic

HIGH voltage is not forced on the pin. In the LOW position, the switch forces the $\overline{\text{MR}}$ pin to the negative power supply rail, a logic LOW.

$V_{\text{BB}} = V_{\text{BBAC}}$

V_{BB} labeled on the board is actually V_{BBAC} per the data sheet.

V_{T}

The V_{T} pin can be set to V_{CC} , V_{EE} (239) GND (239S), V_{BB} or SMAGND by using a jumper.

V_{EE} / GND

V_{EE} is the negative supply for the NB6L239. GND is the negative supply for the NB6N239S.

Table 2. PIN DESCRIPTION (refer to data sheet, NB6N239S/D)

Pin # 16–QFN	Pin Name	I/O	Open Pin Default	Type	Function
1	VT				Internal 100 Ω Center
2	CLK	Input		LVPECL, CML, LVDS, HSTL	Noninverted Differential CLOCK Input.
3	$\overline{\text{CLK}}$	Input		LVPECL, CML, LVDS, HSTL	Inverted Differential CLOCK Input.
4	V_{BBAC}	Output		Reference Voltage	Output Voltage Reference for Capacitor Coupled Inputs, Only.
5	$\overline{\text{EN}}$	Input	L	LVC MOS/LVTTL Input	Synchronous Output Enable
6	SELB0	Input	L	LVC MOS/LVTTL Input	Clock Divide Select Pin
7	SELB1	Input	L	LVC MOS/LVTTL Input	Clock Divide Select Pin
8	GND	Negative Power Supply			Negative Supply Voltage
9	$\overline{\text{QB}}$	Output		LVDS	Inverted Differential Output. Typically terminated with 100 Ω resistor across outputs.
10	QB	Output		LVDS	Noninverted Differential Output. Typically terminated with 100 Ω resistor across outputs.
11	$\overline{\text{QA}}$	Output		LVDS	Inverted Differential Output. Typically terminated with 100 Ω resistor across outputs.
12	QA	Output		LVDS	Noninverted Differential Output. Typically terminated with 100 Ω resistor across outputs.
13	V_{CC}	Positive Power Supply			Positive Power Supply
14	SELA1	Input	L	LVC MOS/LVTTL	Clock Divide Select Pin
15	SELA0	Input	L	LVC MOS/LVTTL Input	Clock Divide Select Pin
16	$\overline{\text{MR}}$	Input	H	LVC MOS/LVTTL Input	Master Reset Asynchronous, Default Open High, Asserted LOW
	EP	Negative Power Supply (opt)			The Exposed Pad on the QFN–16 package bottom is thermally connected to the die for improved heat transfer out of package. The pad is not electrically connected to the die, but is recommended to be electrically and thermally connected to GND on the PC board.

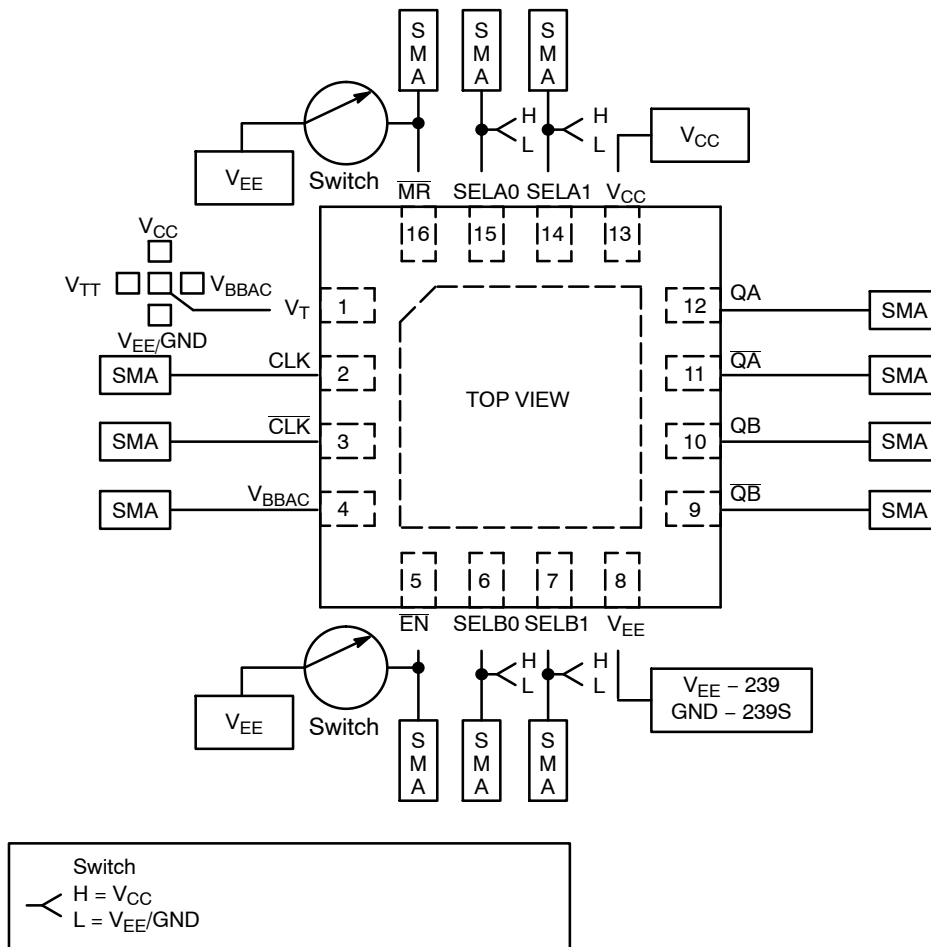
NB6N239SMNEVB

EVALUATION BOARD APPLICATION INFORMATION

Table 3. EVALUATION BOARD BILL OF MATERIALS

Component	Description	Qty
Connector	Rosenberger SMA #32K243-40ME3	6
Capacitor C2, C4	22 μ F, 10%, 16 V, KEMET T494D221T016AT, Case D	2
Capacitor C1, C3	0.1 μ F, 10%, 16 V, KEMET C060C104K4RAC	4
Switch	Grayhill #78B02	4
Jumper Header	100 mil, Berg	5
Jumper/Shunt		1
Resistor R1, R2	1 k Ω , 0603, 1%, VISHAY 52K8015	6
Banana Jack	Deltron #EF681 150-039 Red	1
Banana Jack	Deltron #EF681 150-040 Black	1
Banana Jack	Deltron #EF681 150-043 Yellow	1
Stand-offs with Screws	Optional	4
NB6L239 or NB6N239S	QFN-16 Part Mounted on Board	1

NB6N239SMNEVB



Rosenberger connectors with matched trace launches

Switch for MR

Normally open switch for EN


CLK & \overline{CLK} traces – equal length

All Q Output traces – equal length

“Side-mount” banana jacks for power supplies (can be located on backside of board)

V_T pin has a jumper capability to V_{CC} , V_{EE} / GND, V_{TT} (SMAGND), or V_{BBAC} .

Figure 4. Evaluation Demo Board

ON Semiconductor and  are registered trademarks of Semiconductor Components Industries, LLC (SCILLC). SCILLC reserves the right to make changes without further notice to any products herein. SCILLC makes no warranty, representation or guarantee regarding the suitability of its products for any particular purpose, nor does SCILLC assume any liability arising out of the application or use of any product or circuit, and specifically disclaims any and all liability, including without limitation special, consequential or incidental damages. “Typical” parameters which may be provided in SCILLC data sheets and/or specifications can and do vary in different applications and actual performance may vary over time. All operating parameters, including “Typicals” must be validated for each customer application by customer’s technical experts. SCILLC does not convey any license under its patent rights nor the rights of others. SCILLC products are not designed, intended, or authorized for use as components in systems intended for surgical implant into the body, or other applications intended to support or sustain life, or for any other application in which the failure of the SCILLC product could create a situation where personal injury or death may occur. Should Buyer purchase or use SCILLC products for any such unintended or unauthorized application, Buyer shall indemnify and hold SCILLC and its officers, employees, subsidiaries, affiliates, and distributors harmless against all claims, costs, damages, and expenses, and reasonable attorney fees arising out of, directly or indirectly, any claim of personal injury or death associated with such unintended or unauthorized use, even if such claim alleges that SCILLC was negligent regarding the design or manufacture of the part. SCILLC is an Equal Opportunity/Affirmative Action Employer. This literature is subject to all applicable copyright laws and is not for resale in any manner.

PUBLICATION ORDERING INFORMATION

LITERATURE FULFILLMENT:

Literature Distribution Center for ON Semiconductor
P.O. Box 5163, Denver, Colorado 80217 USA
Phone: 303-675-2175 or 800-344-3860 Toll Free USA/Canada
Fax: 303-675-2176 or 800-344-3867 Toll Free USA/Canada
Email: orderlit@onsemi.com

N. American Technical Support: 800-282-9855 Toll Free
USA/Canada

Europe, Middle East and Africa Technical Support:
Phone: 421 33 790 2910

Japan Customer Focus Center
Phone: 81-3-5817-1050

ON Semiconductor Website: www.onsemi.com

Order Literature: <http://www.onsemi.com/orderlit>

For additional information, please contact your local
Sales Representative