

NB7L1008MNGEVB

NB7L1008MNG Evaluation Board User's Manual



ON Semiconductor®

www.onsemi.com

EVAL BOARD USER'S MANUAL

Introduction

The NB7L1008 is a high performance differential 1:8 Clock/Data fanout buffer that operates up to 12 Gbps/7 GHz with a 2.5 V or 3.3 V power supply. ON Semiconductor has developed a “universal” QFN–32 evaluation board and configured it for the NB7L1008. This evaluation board was designed to provide a flexible and convenient platform to quickly evaluate, characterize and verify the operation of the NB7L1008.

This evaluation board manual contains:

- Information on the NB7L1008 Evaluation Board
- Test and Measurement Setup Procedures

This manual should be used in conjunction with the device datasheet, which contains full technical details on the device specifications and operation.

Board Layout

The NB7L1008 Evaluation Board provides a high bandwidth, 50-Ω controlled impedance environment and is implemented in one layer.

Layer Stack

L1 (Rogers)

High-performance SMA connectors are provided for all high-speed input & output signal access.

Evaluation Board Assembly Instructions

The QFN–32 evaluation board is designed for characterizing devices in a 50-Ω laboratory environment using high bandwidth equipment.

Output Loading/Termination

LVPECL Outputs

Table 1. DIFFERENTIAL INPUTS DRIVEN SINGLE – ENDED (Notes 1 & 2)

Symbol	Characteristic	Min	Typ	Max	Unit
V_{IH}	Single – Ended Input High Voltage	$V_{th} + 75$	–	V_{CC}	mV
V_{IL}	Single – Ended Input Low Voltage	V_{EE}	–	$V_{th} - 100$	mV
V_{th}	Input Threshold Reference Voltage Range	$V_{EE} + 1100$	–	$V_{CC} - 100$	mV
V_{ISE}	Single – Ended Input Voltage ($V_{IH} - V_{IL}$)	200	–	1200	mV

1. V_{th} , V_{IH} , V_{IL} and V_{ISE} parameters must be complied with simultaneously.
2. V_{th} is applied to the complementary input when operating in single-ended mode.

Table 2. DIFFERENTIAL INPUTS DRIVEN DIFFERENTIALLY (IN, INB) (Note 3)

Symbol	Characteristic	Min	Typ	Max	Unit
V_{IHD}	Differential Input High Voltage	$V_{EE} + 1100$	–	V_{CC}	mV
V_{ILD}	Differential Input Low Voltage	V_{EE}	–	$V_{IHD} - 100$	mV
V_{ID}	Differential Input Voltage ($V_{IHD} - V_{ILD}$)	100	–	1200	mV
I_{IH}	Input High Current	–150	40	+150	μA
I_{IL}	Input Low Current	–150	5	+150	μA

3. V_{IHD} , V_{ILD} , V_{ID} and V_{CMR} parameters must be complied with simultaneously.

If the input signals to the NB7L1008 require termination, internal 50-Ω resistors are provided via the VT pin and grounded using a SMA grounding plug then and should be stimulated with the appropriate voltage levels.

NOTE: For this evaluation board, VT is connected to ground, thus it can only be used for LVPECL inputs.

NB7L1008MNGEVB

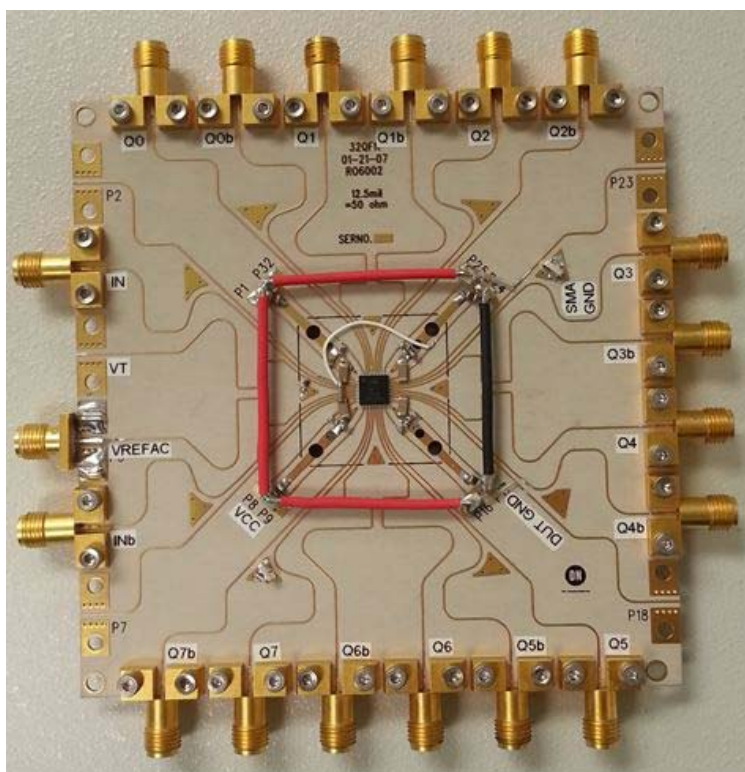


Figure 1. Test Board

1. Connect the appropriate power supplies to V_{CC} , DUTGND.
2. Connect a signal generator to the input SMA connectors. Setup input signal levels according to the device data sheet.

3. Connect a test measurement device to the device's output SMA connectors.

NOTE: The test measurement device must contain 50- Ω termination.

Table 3. NB7L1008, LVPECL INPUTS AND LVPECL OUTPUTS

Device Pin Power Supply Connector	Power Supply
V_{CC}	$V_{CC} = 2\text{ V}$
50 Ω Input	$VT = 0\text{ V}$
DUTGND	$DUTGND = V_{EE} = -0.5\text{ V}$ (for 2.5 V) and -1.3 V (for 3.3 V)

Table 4. NB7L1008, CML INPUTS AND LVPECL OUTPUTS

Device Pin Power Supply Connector	Power Supply
V_{CC}	$V_{CC} = 2\text{ V}$
50 Ω Input	$VT = V_{CC}$
DUTGND	$DUTGND = V_{EE} = -0.5\text{ V}$ (for 2.5 V) and -1.3 V (for 3.3 V)

Table 5. NB7L1008, LVDS INPUTS AND LVPECL OUTPUTS

Device Pin Power Supply Connector	Power Supply
V_{CC}	$V_{CC} = 2\text{ V}$
50 Ω Input	$VT = \text{Open}$
DUTGND	$DUTGND = V_{EE} = -0.5\text{ V}$ (for 2.5 V) and -1.3 V (for 3.3 V)

NB7L1008MNGEVB

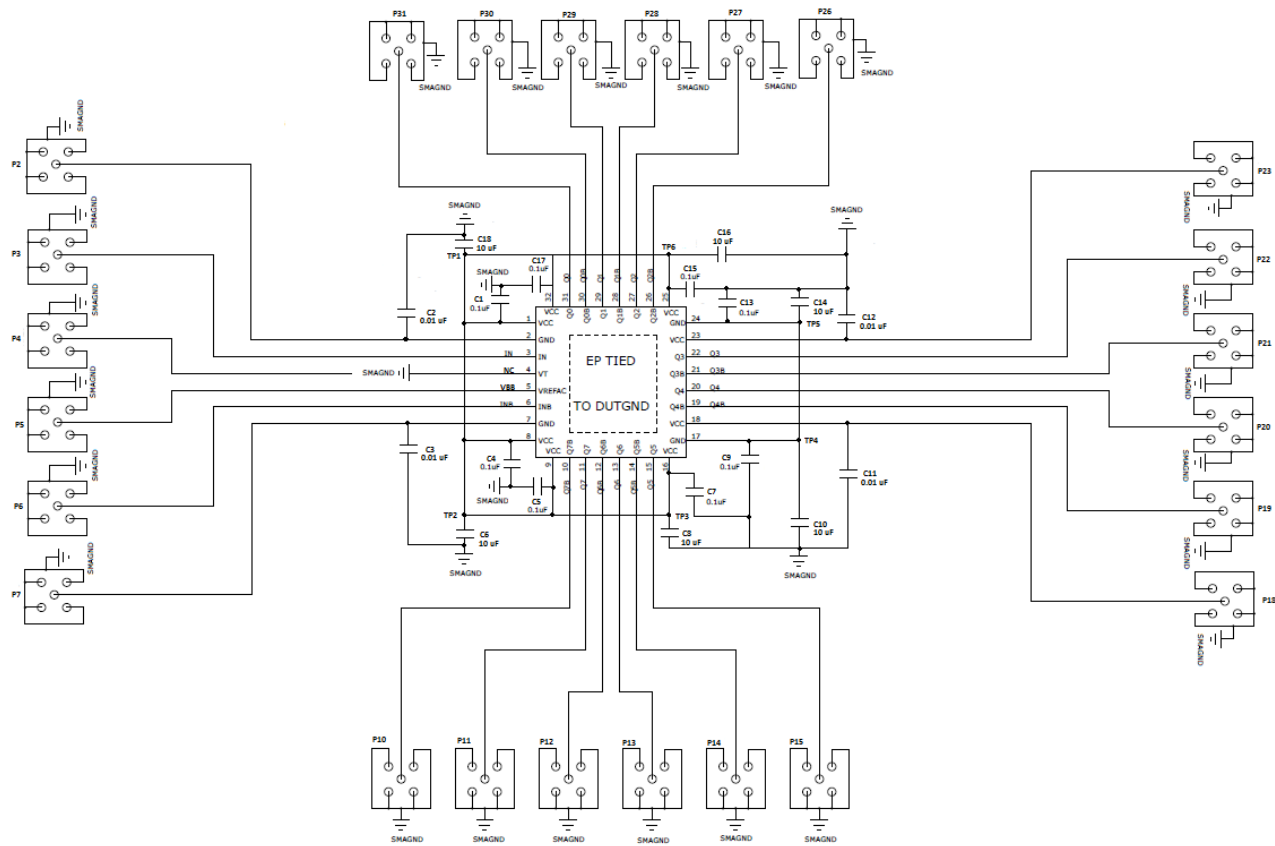



Figure 2. Schematic Drawing

Table 6. BILL OF MATERIALS

Components	Manufacturer	Description	Manufacturer Part Number	Web Site
SMA Connector	Rosenberger	High Performance SMA Connector, Side Launch, Gold Plated	32K243-40ME3	http://www.rosenberger.de http://www.rosenbergerna.com
SMA Connector	Johnson-Emerson	SMA Connector, Side Launch, Gold Plated	142-0701-801	http://www.digikey.com
Surface Mount Test Points	Keystone*	SMT Compact Test Point	5016	http://www.keylco.com
Chip Capacitor	AVC Corporation*	0603 0.1 μ F \pm 10%	0603C104KAT2A	http://www.avxcorp.com
Chip Capacitor	Kemet	1206 0.01 μ F \pm 10%	C1206C103K5RACTU	http://www.newark.com
Chip Capacitor	TDK	0603 0.1 μ F \pm 10%	C3216X5R1H106K160AB	http://www.newark.com
Evaluation Board	ON Semiconductor	QFN 32 Evaluation Board – 2-Layer		http://www.onsemi.com
Device Samples	ON Semiconductor	NB7L1008MNG		http://www.onsemi.com

*Components are available through most distributors, i.e. www.newark.com, [www.Digikey.com](http://www.digikey.com)

ON Semiconductor and  are trademarks of Semiconductor Components Industries, LLC dba ON Semiconductor or its subsidiaries in the United States and/or other countries. ON Semiconductor owns the rights to a number of patents, trademarks, copyrights, trade secrets, and other intellectual property. A listing of ON Semiconductor's product/patent coverage may be accessed at www.onsemi.com/site/pdf/Patent-Marking.pdf. ON Semiconductor reserves the right to make changes without further notice to any products herein. ON Semiconductor makes no warranty, representation or guarantee regarding the suitability of its products for any particular purpose, nor does ON Semiconductor assume any liability arising out of the application or use of any product or circuit, and specifically disclaims any and all liability, including without limitation special, consequential or incidental damages. Buyer is responsible for its products and applications using ON Semiconductor products, including compliance with all laws, regulations and safety requirements or standards, regardless of any support or applications information provided by ON Semiconductor. "Typical" parameters which may be provided in ON Semiconductor data sheets and/or specifications can and do vary in different applications and actual performance may vary over time. All operating parameters, including "Typicals" must be validated for each customer application by customer's technical experts. ON Semiconductor does not convey any license under its patent rights nor the rights of others. ON Semiconductor products are not designed, intended, or authorized for use as a critical component in life support systems or any FDA Class 3 medical devices or medical devices with a same or similar classification in a foreign jurisdiction or any devices intended for implantation in the human body. Should Buyer purchase or use ON Semiconductor products for any such unintended or unauthorized application, Buyer shall indemnify and hold ON Semiconductor and its officers, employees, subsidiaries, affiliates, and distributors harmless against all claims, costs, damages, and expenses, and reasonable attorney fees arising out of, directly or indirectly, any claim of personal injury or death associated with such unintended or unauthorized use, even if such claim alleges that ON Semiconductor was negligent regarding the design or manufacture of the part. ON Semiconductor is an Equal Opportunity/Affirmative Action Employer. This literature is subject to all applicable copyright laws and is not for resale in any manner.

PUBLICATION ORDERING INFORMATION

LITERATURE FULFILLMENT:

Literature Distribution Center for ON Semiconductor
19521 E. 32nd Pkwy, Aurora, Colorado 80011 USA
Phone: 303-675-2175 or 800-344-3860 Toll Free USA/Canada
Fax: 303-675-2176 or 800-344-3867 Toll Free USA/Canada
Email: orderlit@onsemi.com

N. American Technical Support: 800-282-9855 Toll Free
USA/Canada
Europe, Middle East and Africa Technical Support:
Phone: 421 33 790 2910
Japan Customer Focus Center
Phone: 81-3-5817-1050

ON Semiconductor Website: www.onsemi.com

Order Literature: <http://www.onsemi.com/orderlit>

For additional information, please contact your local Sales Representative