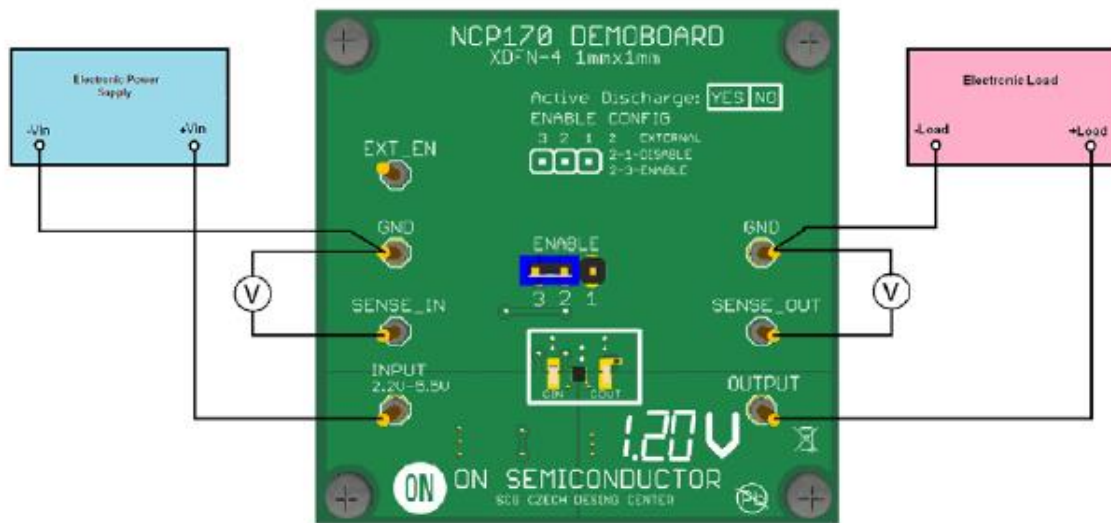




Test Procedure for the NCP170AMX300GEVB Evaluation Board



Test procedure:

1. Check the position of jumper and correct this if necessary in accordance with the picture above.
2. Connect the test setup as shown Figure above
3. Apply an input voltage **V_{in} = 4.0 V**
4. Apply I_{out} = 0mA load.
5. Check that V_{out} is **3.0 V +/-1%**.
6. Increase I_{out} up to **0.15 A**
7. Check that V_{out} is **3.0 V +/-1%**.
7. Increase V_{in} up to **5.5 V** and decrease the load in accordance with **SOA**
8. Power down the Load
9. Power down the V_{cc}
10. End of test