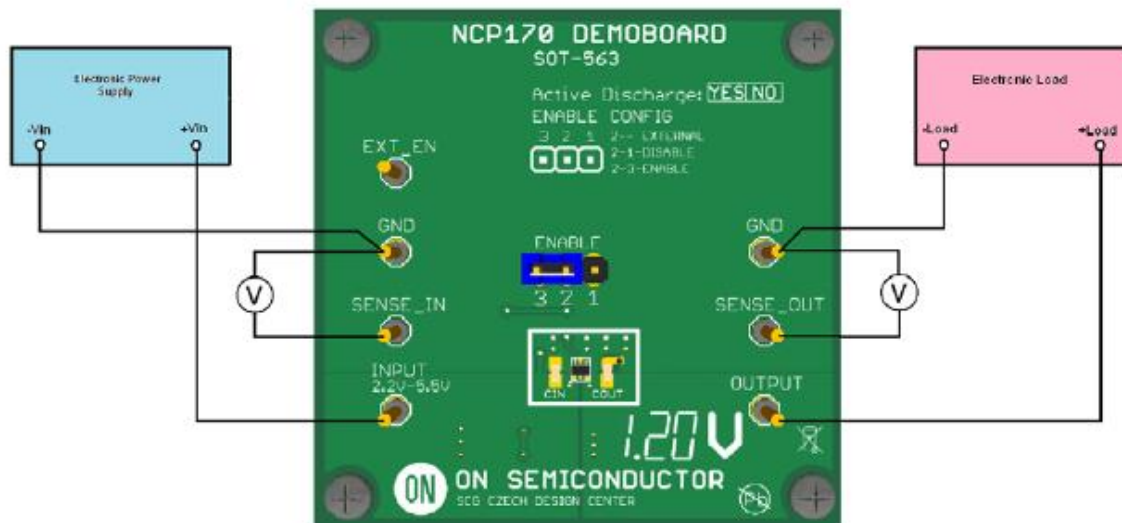




## Test Procedure for the NCP170AXV180GEVB Evaluation Board



### Test procedure:

1. Check the position of jumper and correct this if necessary in accordance with the picture above.
2. Connect the test setup as shown Figure above
3. Apply an input voltage **V<sub>in</sub> = 2.8 V**
4. Apply I<sub>out</sub> = 0mA load.
5. Check that V<sub>out</sub> is **1.8 V +/-1%**.
6. Increase I<sub>out</sub> up to **0.15 A**
7. Check that V<sub>out</sub> is **1.8 V +/-1%**.
7. Increase V<sub>in</sub> up to **5.5 V** and decrease the load in accordance with **SOA**
8. Power down the Load
9. Power down the V<sub>cc</sub>
10. End of test