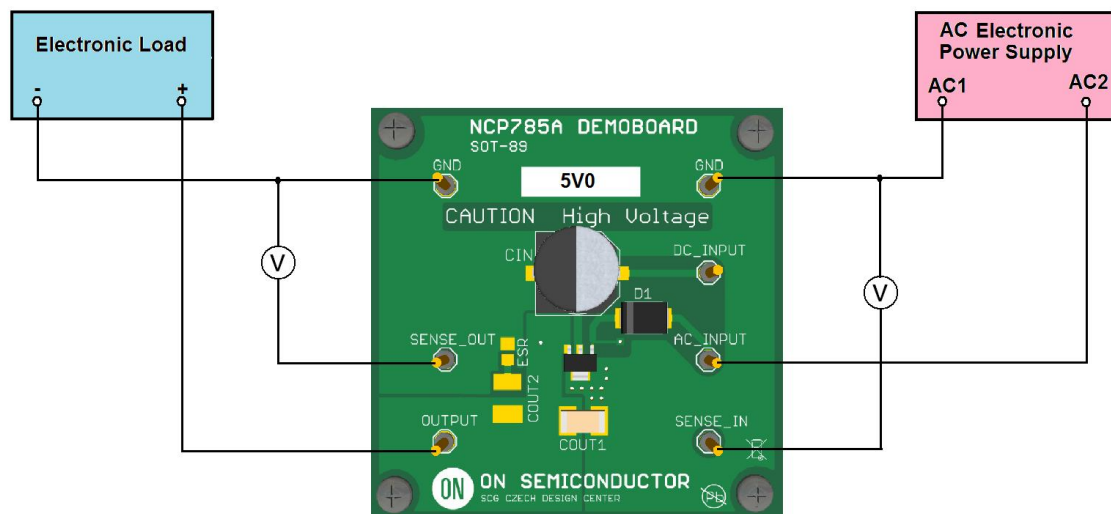




Test Procedure for NCP785AH50GEVB



Test procedure:

1. Connect the test setup as shown Figure above
2. Apply an input AC voltage **V_{in} = 85 Vac**
4. Apply I_{out} = 0mA load.
5. Check that V_{out} is **5.0 V +/-5%**.
6. Increase I_{out} up to **10 mA**
7. Check that V_{out} is **5.0 V +/-5%**.
7. Increase V_{in} up to **235 Vac** and decrease the load in accordance with **SOA**
8. Power down the Load
9. Power down the Input Voltage
10. End of test