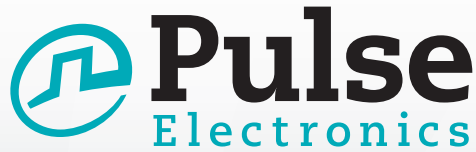


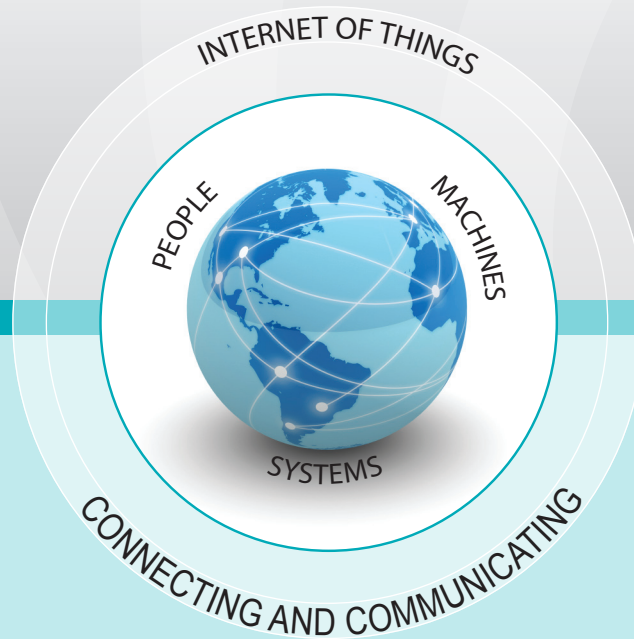
## Wireless Division

### A global leader in antennas for wireless device applications:

- A leader in IoT, offering top-notch antenna solutions for the Medical, Utility, Transportation, Exploration and Smart markets.
- Offering IoT solutions for sensing, connectivity, data collection, monitoring, tracking and many more applications!
- Internal and external solutions covering frequencies from 13.6 MHz to 6 GHz.
- Covering technologies such as WLAN, WiFi, Zigbee, ISM, GPS, Cellular, LTE, GSM, UHF and VHF.



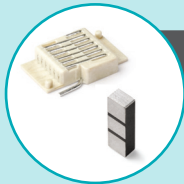
MAKING IOT POSSIBLE



## Core Skills

- Excellent value and outstanding quality products delivered from high-volume production facilities.
- Key supplier to the leading global OEMs.
- Worldwide Distribution support.
- Geographic proximity to customers' design and production.
- Unique far-reaching understanding of antennas and RF issues.
- Our extensive R&D has made us the technology leader in our field.

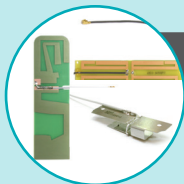
**We have shipped over 2 Billion antennas!**



### Embedded Antennas

Embedded onto / soldered to PCB

- Antenna Technology: Ceramic, Helical, Patch, Stamped Metal.
- Frequencies: WLAN, Zigbee, ISM, GPS, 3G, 4G, LTE, multi-bands.
- Applications: OEM equipment, medical devices, security systems, tracking and monitoring devices, handhelds, meter reading, smart devices and more.



### Internal Antennas

Located inside the device – cable assembly connected to PCB.

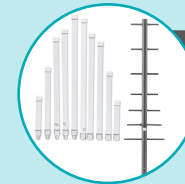
- Antenna Technology: Flex Printed Circuit Board (FPCB), Patch.
- Frequencies: WLAN, Zigbee, ISM, GPS, 3G, 4G, LTE, multi-bands.
- Applications: Located inside medical devices, security systems, tracking and monitoring devices, handhelds, meter reading, smart devices, etc. and usually connected by a cable assembly.



### External Antennas

For indoor use – with radome, connected outside the device.

- Radome included – cosmetics matter.
- Technology: dipoles, blades, external patches.
- Cable assemblies or connector options.
- Mounting options: adhesive, direct, etc.
- Frequencies: WLAN, ISM, GPS, 3G, 4G, multi-bands.
- Applications: access points, utilities, tracking, wireless communication, remote monitoring, telemedicine, handhelds, POS.



### Outdoor Antennas

For outdoor use – with radome.

- Weatherproof (IP65/67 ratings).
- Technology: radome omni, monopole, dipole, yagi, base station, panel.
- Different mounting options.
- Optional cable assemblies.
- Frequencies: WLAN, ISM, GPS, 3G, 4G, LTE, UHF/VHF, multi-bands.
- Applications: mesh networks, security, smart devices, utilities, tracking, wireless communication, oil & gas exploration, transportation, railroad, and vending.



### Outdoor-Vehicular

For outdoor vehicular use – with radome

- Weatherproof (IP65/67 ratings).
- Technology: monopole, dipole, elevated feed, whips, low profile, pcb, shark fin.
- Different mounting options: NMO mount, direct mount, mag mount, glass mount.
- Optional cable assemblies.
- Frequencies: UHF, VHF, WLAN/WiFi, ISM, GPS, 3G, 4G, LTE, multi-bands.
- Applications: tracking, wireless communication, transportation, railroad, public safety, military, video, monitoring.

# Wireless Division: Market and Product Focus

## MEDICAL INDUSTRY



## TRANSPORTATION



## POS/VENDING



## ENERGY/OIL/GAS



## SMART HOMES/CITIES



## APPLICATION

- Medical Monitoring Devices
- Sensors
- Patient Tracking
- Handheld equipment
- Remote Monitoring
- Telemedicine
- Patient Data Transmission
- Wireless connectivity

- Railroad
- Remote monitoring
- Vehicular monitoring devices: tire pressure, air bags, etc.
- Vehicle tracking
- Container tracking
- Hands-free communication
- WiFi enabled "smart" vehicles
- DSRC – dedicated short range communication
- Video streaming

- Point of Sale Equipment
- Vending Machines
- Parking Meters
- Credit Card Readers
- Remote Payments
- Product Tracking
- Stock Management
- Wireless Scanners
- Bar Code Readers

- Remote Monitoring
- Equipment Tracking
- Sensoring
- Wireless Communication
- Small Base Stations
- Data Transmission
- Vehicle Tracking
- People Tracking
- Oil/Gas levels

- Smart Lighting
- Smart Metering
- Security
- Smart Clothing and Wearables
- Smart Home Equipment
- Mesh Networks
- Traffic Monitoring
- Access Points
- Water and Waste Management
- Parking and Public Transportation

## PRODUCTS

Antenna Style	ISM	WLAN, BLE/BT <i>*2.4 GHz unless otherwise noted</i>	3G/4G (LTE)	GPS,GNSS (#) GPS+Glonass
<b>Embedded</b> On the board: Ceramic, Helical, Patch, Stamped Metal	W3000 W3012 W3013 W3112A W3113 W3126 W3127	W3001 W3006 - Dual W3008, W3008C W3056 - + GPS W3095 - + GPS W3078 - Dual W3108	W3544A W3544B W3070 W3073	W3009 W3010(#), W3062A(#) W3011, W3011A W3056 - + WLAN W3095 - + WLAN W3110 W3213, W3216
<b>Internal</b> Inside device, with cable assembly connecting to board	* See Mktg.	W3513 - Dual W3525 W3593 - 5 GHz	W3501, W3502 W3538B0150* W3554B0140*	* See Mktg.
<b>External</b> Outside device, indoor-use	W1063 SPDA24918	W1010 W1027 W1030 W1038 W1043 - Dual W1028B - 5 GHz	SPDA17806/2170 SPDA24700/2700 W1900, W1902 W1910, W1911 W1920G0915* W4120GG3000 - +GPS	GPSDM02* W4000G197 W4120GG3000 - +3G
<b>Outdoor</b> Weatherproof, with a radome	W5012	SLPT2400/5900DMN* - Dual RO2408NM** RO5806NM** W5030 - Dual W5036 - Dual W5001, W5010, W5011 W5028 - Dual	SLPT698/2170DMN* RO8061/21702NM** RO17102NM GPSDM700/5800SSS +GPS +dual WLAN	GPSDM02* GPS0010*

\*See Mkt for cable & conn. Option \*\* See Mktg for gain options