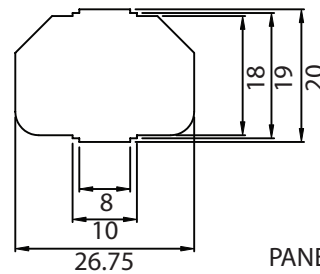
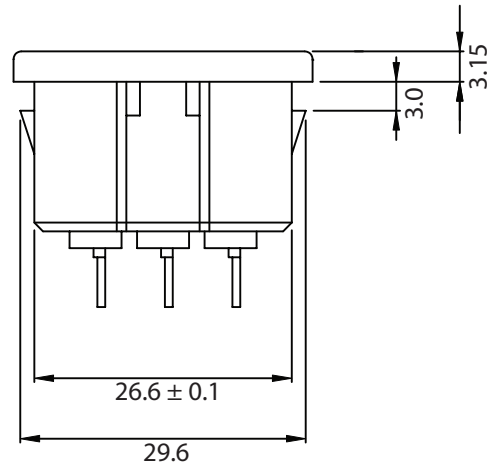
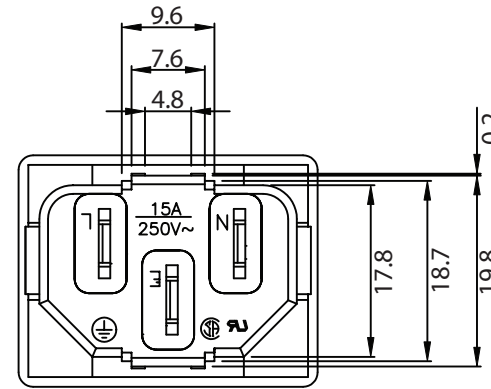
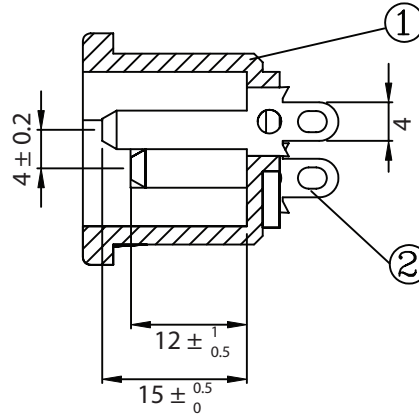
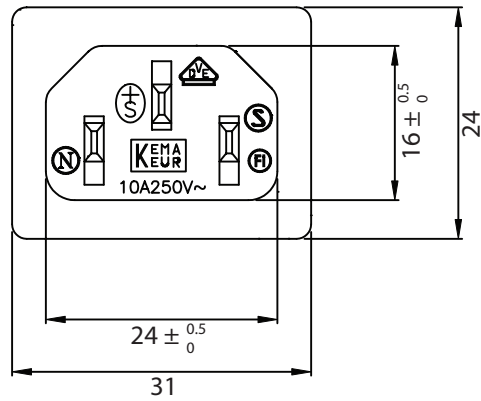
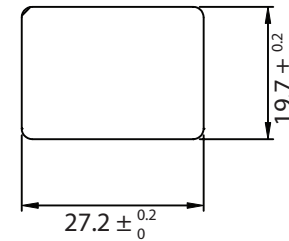


THESE DRAWINGS ARE THE PROPERTY OF QUALTEK ELECTRONICS AND NOT TO BE REPRODUCED FOR OR COMMUNICATED TO A THIRD PARTY WITHOUT THE EXPRESS WRITTEN PERMISSION OF AN OFFICER OF QUALTEK ELECTRONICS.

REVISION			
REV.	DESCRIPTION	DATE	APPROVED
B	RoHS Compliancy	06-01-06	DP



PANEL CUTOUT



CONTROLLED

NOTES:

RATING:

UL, CSA: 15A 250V AC

VDE: 10A 250V AC

APPROVALS: UL, CSA, VDE

PANEL THICKNESS: 3.0mm

RoHS COMPLIANT

2	Contact PIN Bronze Strip t=2mm Tin-Plated	3			
1	Body Insulator PC 141R Black Color	1			
Dim range (mm)		Tolerance +/- (mm)		Qualtek Electronics Corp. PPC DIVISION Part Number: 701W-30/50 RoHS Compliant	
0-1		0.15			
1-6		0.20		Description: AC RECEPTACLE	
6-18		0.30			
18-50		0.50		UNIT: mm	
50-120		0.70			
120-250		0.90		REV. B	
250-500		1.20			
Drawn / Date		Checked / Date		Approved / Date	
B.ZHANG 05-01-02		05-01-02		JJH / 05-01-02	