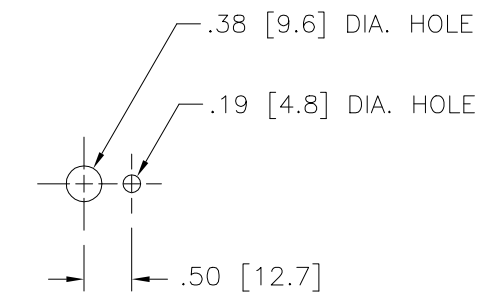


SCHEMATIC  
VIEWED FROM BASE END



PANEL MTG. DETAIL

SPECIFICATIONS											
WIRING	INPUT		OUTPUT				SHAFT ROTATION TO INCREASE VOLTAGE	TERMINAL CONNECTIONS			
	VOLTS	HERTZ	VOLTS	CONSTANT CURRENT LOAD		CONSTANT IMPEDANCE LOAD		FOR INCREASING VOLTAGE AS VIEWED FROM BASE END			
				MAX. AMPS	MAX. KVA	MAX. AMPS		MAX. KVA	INPUT	JUMPER	OUTPUT
SINGLE PHASE	120	50/60	0-120	2.5	0.30	3.2	0.38	CW	1-2	---	1-3
		60	0-132	2.5	0.33	---	---	CCW	1-2	---	2-3
								CW	1-4	---	1-3

UNLESS OTHERWISE SPECIFIED, TOLERANCE IS ±

DECIMALS	HOLES	ANGLES	DRAFT	UNITS
.XX	.0008	1°	1-1/2°	IN [mm]
.XXX	.005			

MATERIAL: ALL DIMENSIONS APPLY AFTER PLATING

THE INFORMATION AND DESIGN DISCLOSED HEREIN WAS ORIGINATED BY AND IS THE PROPERTY OF STACO ENERGY PRODUCTS CO., WHICH RESERVES ALL PATENT, PROPRIETARY, DESIGN, MANUFACTURING, REPRODUCTION, USE AND SALE RIGHTS THEREIN, AND TO ANY ARTICLE DISCLOSED THEREIN EXCEPT TO THE EXTENT RIGHTS ARE EXPRESSLY GRANTED TO OTHERS. THE FOREGOING DOES NOT APPLY TO VENDOR PROPRIETARY PARTS.

DATE: 1/24/02  
DRAWN BY: S.A. SMITH  
CHECKER: SAS  
ENGINEER: SAS

DATE: 1/25/02  
SCALE: 1/1

FIRST USED ON: 1/24/02  
DO NOT SCALE DWG.  
CAGE CODE: 83008  
SHEET 1 OF 1

STACO ENERGY PRODUCTS CO.  
A Components Corporation of Ameresco Company  
302 Gadsden Boulevard Dayton, Ohio 45403 USA

TITLE: SPEC. CONTROL DRAWING  
VARIABLE TRANSFORMER  
MODEL 221-B

DWG. NO. 031-0155