

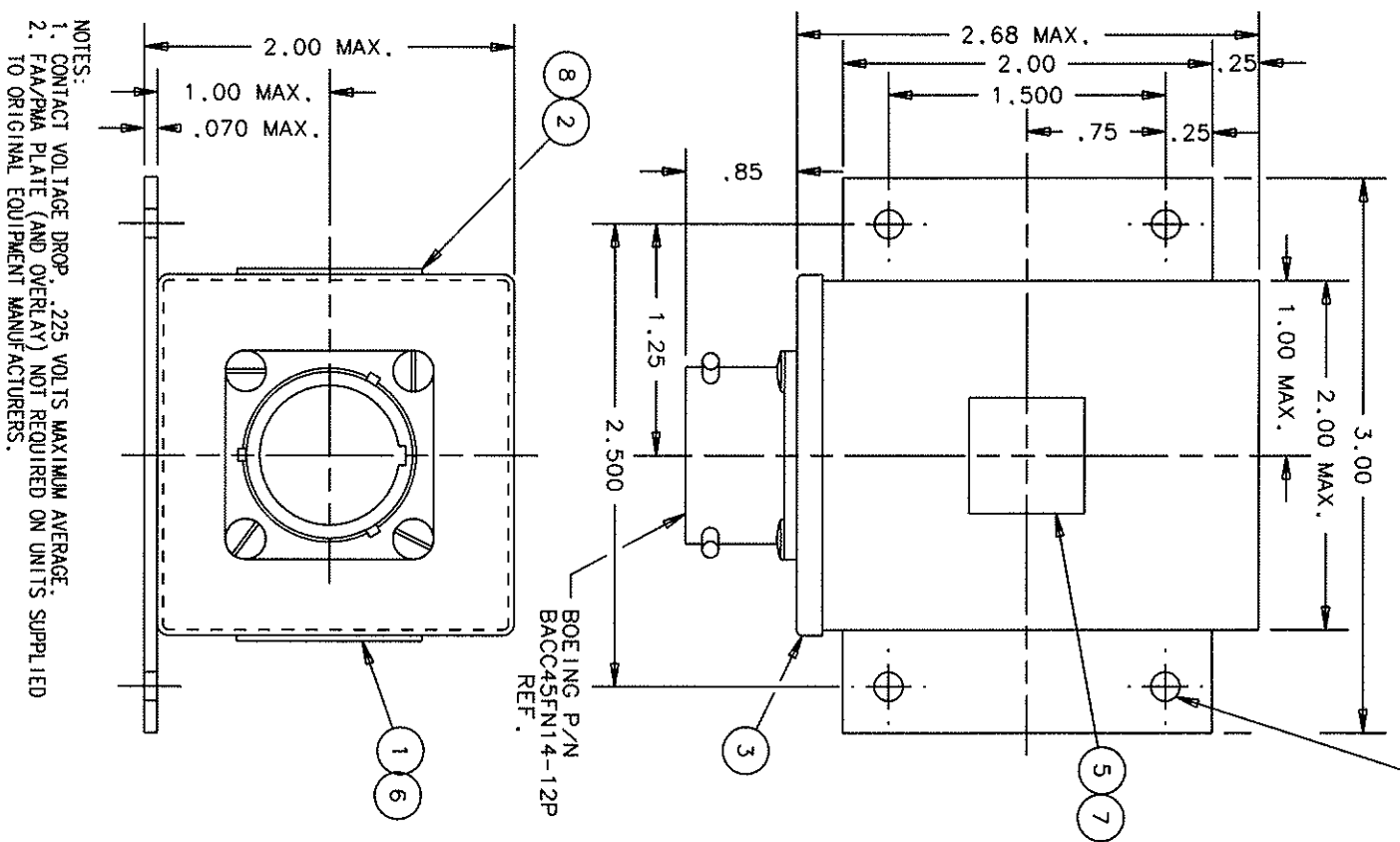
FAA-PMA

| REV. | DESCRIPTION | DATE | APPROVED |
|------|---|----------|----------|
| 1 | UPDATE SPECIFICATIONS | 93/03/10 | W.S. |
| 2 | ADDED TOLERANCES | 94/06/29 | R.S. |
| 3 | NOTE 2 ADDED | 98/05/04 | R.S. |
| 4 | *BOEING P/N* & *100,000 MECH OPER* ADDED, 3 AXIS WAS AXES | 99/05/24 | RS |

REVISIONS

RELEASED

.156 +.010 DIA. HOLE
4 MITG. HOLES

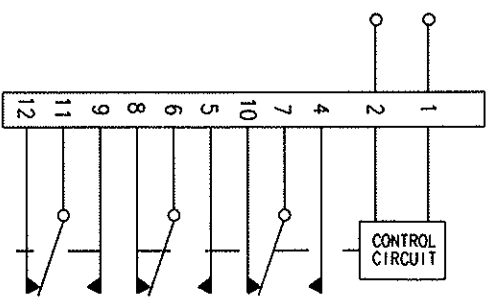


ELECTRICAL
CONTACT FORM
CONTACT RATING (AMPS PER POLE AT 155 VAC AND 28 VDC)
CONTACT LIFE

CONTACT BOUNCE
DUTY CYCLE
NOM. OPERATING VOLTAGE
MAX. OPERATING VOLTAGE
OPERATING FREQUENCY
PICK-UP VOLTAGE
PICK-UP TIME
DROP-OUT VOLTAGE
DROP-OUT TIME DELAY

3PDT
RESISTIVE
INDUCTIVE
MOTOR
LAMP

115 VAC
400 HZ



INPUT VOLTAGE TRANSIENTS
OPERATING CURRENT
DIELECTRIC WITHSTANDING VOLTAGE
INSULATION RESISTANCE
ENVIRONMENTAL
AMBIENT TEMPERATURE
VIBRATION
SHOCK
ACCELERATION
ALTITUDE
MECHANICAL WEIGHT CONSTRUCTION
SEAL

1000 MEGOHMS, MINIMUM, AT 500 VDC
-55°C TO +85°C (OPERATING)
-55°C TO +125°C (NON-OPERATING)
PER BOEING SPECIFICATION
D6-44599 CATEGORY C ZONE 1
30 G'S, 11 MILLISECOND, 1/2 SINE,
3 AXIS
20 G'S IN ANY AXIS
0 TO 80,000 FEET
10 OUNCES MAX.
ALUMINUM METAL CAN, MOUNTING FLANGES AND COVER, SENSOR POTTED
BLACK LAQUER PAINT
SOLDER SEALED COVER, HERMETIC SEALED CONTACTS

NOTES:
1. CONTACT VOLTAGE DROP, .225 VOLTS MAXIMUM AVERAGE.
2. FAA/PMA PLATE (AND OVERLAY) NOT REQUIRED ON UNITS SUPPLIED TO ORIGINAL EQUIPMENT MANUFACTURERS.

| 8 | 7 | 6 | 5 | 3 | 1 |
|---|-----------|-----------|-------------------|--------------------------|------------------------------|
| 1 | 1 | 1 | 1 | 1 | 1 |
| 39529-038 | 39529-047 | 39529-073 | 39529-056 | 36313-010 | 16043-056 |
| OVERLAY | OVERLAY | OVERLAY | PLATE - FAA / PMA | RELAY ASSEMBLY - PRIMARY | PLATE - NAME (LOCATION OPT.) |
| UNLESS OTHERWISE SPECIFIED DIMENSIONS ARE IN INCHES TOLERANCES ON | | | | | |
| 2 PL. DEC. 3 PL. DEC. ANGLES | | | | | |
| * .06 ± .010 ± 1* | | | | | |
| MATERIAL | | | | | |
| HARTMAN ELECTRICAL MANUFACTURING MANSFIELD, OHIO | | | | | |
| RELAY-VOLTAGE SENSING | | | | | |
| 093 | | | | | |
| SIZE CODE IDENT DWG NO. | | | | | |
| C 74063 E-329E | | | | | |
| SCALE NONE SHEET | | | | | |