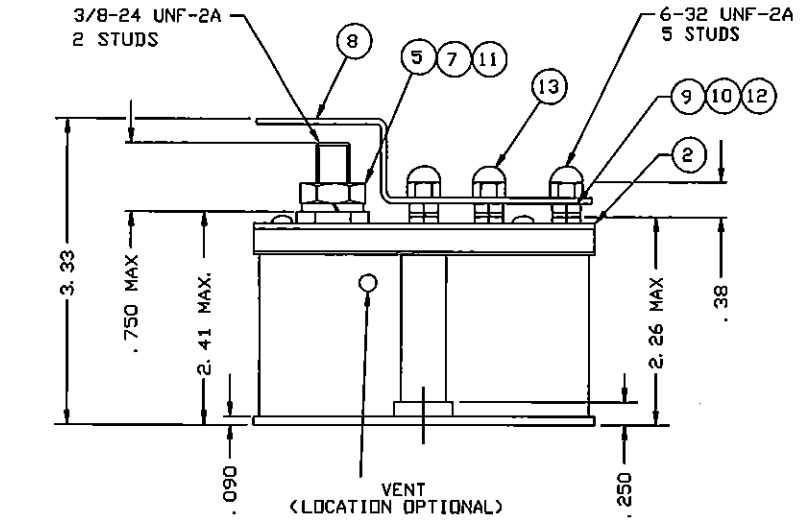
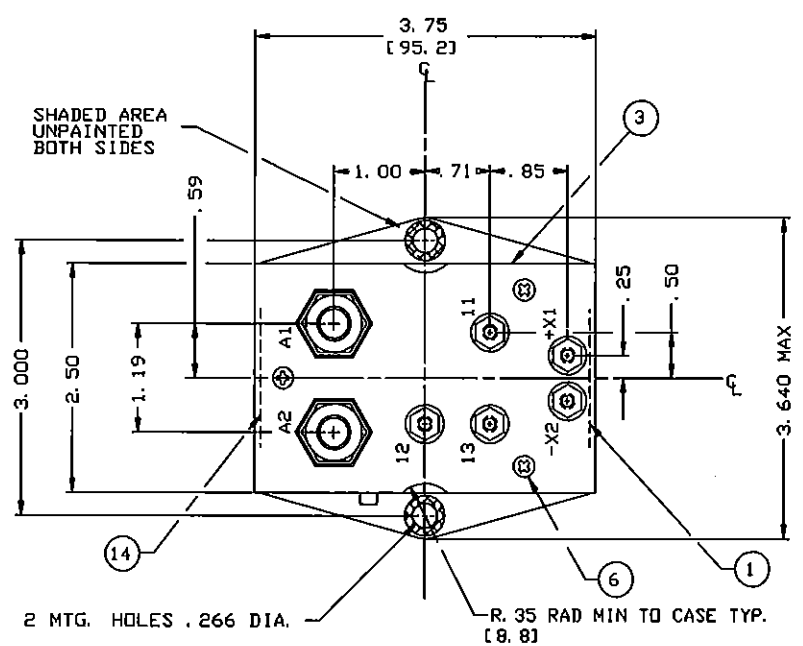
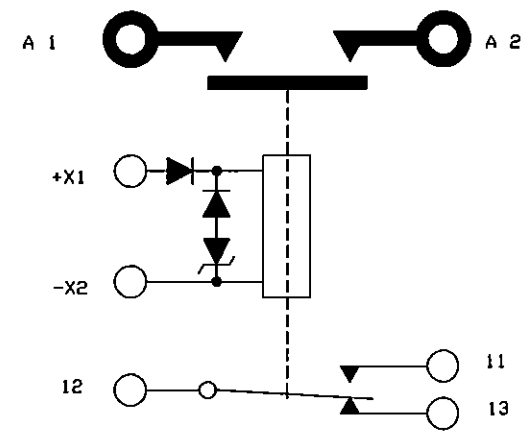


REVISONS		RELEASED	
REV	ECN No.	DESCRIPTION	DATE APPROVED
B	41115	STEERING DIODE ADDED TO SCHEMATIC	99/11/24 RS
C	43554	5.3 FINISH WAS BLACK EPOXY	00/11/29 RS
D	14-012010	DEL. ITEM 15; ITEM 14 WAS 39529-037 OVERLAY	14/08/08 MDM



- NOTES:
1. THIS UNIT MEETS THE MATERIAL AND WORKMANSHIP REQUIREMENTS OF MIL-R-6106J.
 2. TERMINAL SHIELD, ITEM 8, OMITTED FROM TOP VIEW FOR CLARITY.
 3. SEE SHEET 2 FOR DETAILED SPECIFICATIONS.
 4. DIMENSIONS IN BRACKETS ARE IN MILLIMETERS.



SCHEMATIC DIAGRAM

15							
14	1	48336-004	NAME PLATE		2-1616994-7		
13	5	50406-170	NUT 6-32 HEX. CAP		NYLON		
12	5	51702-204	WASHER-FLAT 3/8 X 9/64 X .032		BRASS		
11	2	51704-024	WASHER-FLAT 5/8 X 25/64 X .062		BRASS		
10	5	50406-034	NUT 6-32 X 5/16 X 5/64 HEX.		BRASS		
9	5	51806-014	WASHER-LOCK NO. 6		BRONZE		
8	1	44198-002	TERMINAL SHIELD				
7	2	51807-084	WASHER-LOCK NO. 3/8 SPLIT TYP.		BRONZE		
6	3	51200-020	SCREW NO. 4 X 1/4 PAN HD.		ST. STEEL		
5	2	50407-164	NUT 3/8-24 X 5/8 X 7/32 HEX		BRASS		
4	1	44178-030	CONTACTOR ASSEMBLY-PRIMARY				
3	1	44179-002	PLATE-WIRING DIAGRAM				
2	1	44088-003	PLATE-BASE COVER				
1	1	16043-094	PLATE-NAME				
FIND NO	QTY REQD	PART OR IDENTIFYING NO	NOMENCLATURE OR DESCRIPTION	FSCM NO	DRAWING OR SPECIFICATION	MATERIAL OR NOTE	
UNLESS OTHERWISE SPECIFIED TOLERANCES ON DIMENSIONS IN INCHES			<p>23 HORTON ST. WILSON-175 N. BROAD ST. WILSON, OHIO 44092</p>	CONTACTOR-CONTINUOUS DUTY SPST N. D., 400 AMP, 28VDC			
2 PL DEC.	3 PL DEC.	ANGLES		DR BY	CSC	00/12/19	SIZE: A CODE IDENT: 74063 DWG NO.: A-400DC 093
± .06	± .010	± 1°		CHK BY	CC	00/12/19	
UNLESS OTHERWISE SPECIFIED TOLERANCES ON DIMENSIONS IN MM			ENGR	JL	00/12/20		
2 PL DEC. 3 PL DEC. ANGLES			MFG	NH	00/12/21	REF TE P/N: 1616056-6	
± 1.5	± .25	± 1°	RELEASE				
			CONTR NO.				
			GOVT APPVL				
			SCALE NONE	SHEET 1 OF 2			

DETAIL SPECIFICATIONS

REVISIONS		RELEASED	APPROVED
REV	ECN No.	DESCRIPTION	DATE
D	14-012010	SEE SHEET 1 FOR REVISIONS	14/08/08

- 1.0 ELECTRICAL (<25°C)
- 1.1 NOM OPERATING VOLTAGE 28 VDC
 - 1.2 MAX OPERATING VOLTAGE 32 VDC
 - 1.3 PICK-UP VOLTAGE <MAX> SEE TABLE 1
 - 1.4 DROP-OUT VOLTAGE SEE TABLE 1
 - 1.5 COIL RESISTANCE (<±10%) 60 OHMS
 - 1.6 COIL CURRENT <MAX> 0.6 AMP
 - 1.7 DUTY CONTINUOUS
- 2.0 CONTACT DATA
- | | MAIN | AUX (<SEE NOTES>) |
|--|----------|-------------------|
| 2.1 CONTACT RATING | 28 VDC | 28 VDC |
| 2.1.1 RESISTIVE | 400 AMP | 5 AMP |
| 2.1.2 INDUCTIVE | 150 AMP | 3 AMP |
| 2.1.3 MOTOR | 250 AMP | - |
| 2.1.4 OVERLOAD | 3200 AMP | - |
| 2.1.5 RUPTURE | 4000 AMP | - |
| 2.1.6 MINIMUM OPERATING CYCLE <LIFE> AT RATED RES/MOTOR LOAD | 50,000 | |
| 2.1.7 MINIMUM OPERATING CYCLE <LIFE> AT RATED INDUCTIVE LOAD | 20,000 | |
| 2.1.8 MECHANICAL LIFE <75 AMP> | 100,000 | |
- 3.0 ENVIRONMENTAL DATA
- 3.1 AMBIENT TEMPERATURE RANGE -55°C - +71°C
 - 3.2 ALTITUDE 50,000 FEET
 - 3.3 DIELECTRIC STRENGTH

	SEA LEVEL	ALTITUDE
3.3.1 COIL TO CASE	1250 VRMS	1000 VRMS
3.3.2 ALL OTHER POINTS	1500 VRMS	500 VRMS
 - 3.4 INSULATION RESISTANCE 100 MEGOHMS INITIAL
50 MEGOHMS AFTER LIFE TEST
 - 3.5 VIBRATION <SINUSOIDAL> .06 D. A., 5 - 55 HZ
10 G, 55 - 500 HZ
 - 3.6 SHOCK <6 - 9 MILLISECONDS> 25 G
 - 3.7 ACCELERATION <MAX> 15 G

- 4.0 OPERATING DATA (<25°C AND 28 VDC)
- 4.1 OPERATE TIME <MAX> .035 SEC.
 - 4.2 RELEASE TIME <MAX> .015 SEC.
 - 4.3 CONTACT BOUNCE TIME <MAX> .004 SEC.
- 5.0 PHYSICAL DATA
- 5.1 WEIGHT <MAX> 1.45 LB
 - 5.2 TERMINAL STRENGTH PER THE REQUIREMENTS OF MIL-R-6106J
PARA. 3.4.8
 - 5.3 FINISH BLACK LACQUER
GASKET SEALED/VENTED
 - 5.5 MARKING PER MIL-STD-130

- 6.0 NOTES
- 6.1 AUXILIARY CONTACTS ARE GOLD PLATED FOR LOW LEVEL 28 VDC LOADS OF 7 -100 mA. EXCEEDING THIS LOW LEVEL RATING MAY DISPLACE THE GOLD PLATING AND RESULT IN UNRELIABLE LOW LEVEL SWITCHING.
 - 6.2 AUXILIARY CONTACTS WILL NOT RETURN TO THE NORMAL <DE-ENERGIZED> POSITION IF THE MAIN CONTACTS ARE TACK WELDED.

TABLE 1

COIL VOLTAGE <VDC> OVER TEMPERATURE RANGE					
MAX PICKUP VOLTAGE			MAX HOLD VOLTAGE		MINIMUM DROPOUT VOLTAGE
NORMAL	HIGH TEMP	CONT CURRENT	HIGH TEMP	CONT CURRENT	
14	18	21	7	9	1.0

REF.	HARTMAN® MANSFIELD, OHIO		
DR BY	CSC	00/12/19	CONTACTOR-CONTINUOUS DUTY SPST N. O., 400 AMP, 28 VDC
CHK BY			
ENGR			
MFG			
RELEASE	SIZE	CODE IDENT	DWG NO.
CONTR NO.	A	74063	A-400DC
GOVT APPVL	SCALE NONE	SHEET 2 OF 2	