

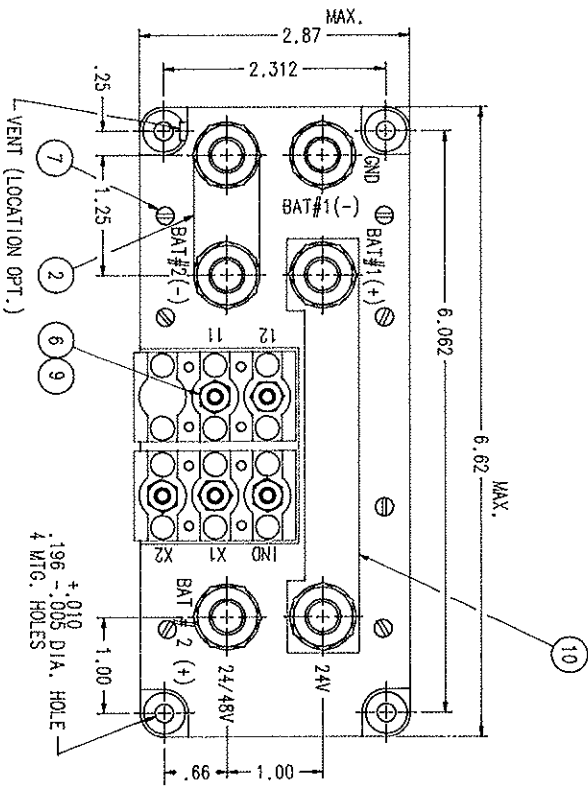
| REV. | DESCRIPTION                           | DATE     | APPROVED |
|------|---------------------------------------|----------|----------|
| T    | 31154 REDRAWN, FIND NOS 12 & 13 ADDED | 96/10/07 | RS       |

FAA/PMA

REVISIONS

CONSTRUCTION  
 MAIN CONTACTS  
 CONFIGURATION  
 VOLTAGE  
 CURRENT-N.C.  
 N.O.

GASKET SEALED (VENTED)  
 DPST-NC, SPST-NO  
 24/48 VDC  
 300 AMP  
 1000 AMP FOR 30 SEC  
 1500 AMP INRUSH  
 CARRY AND BREAK ONLY

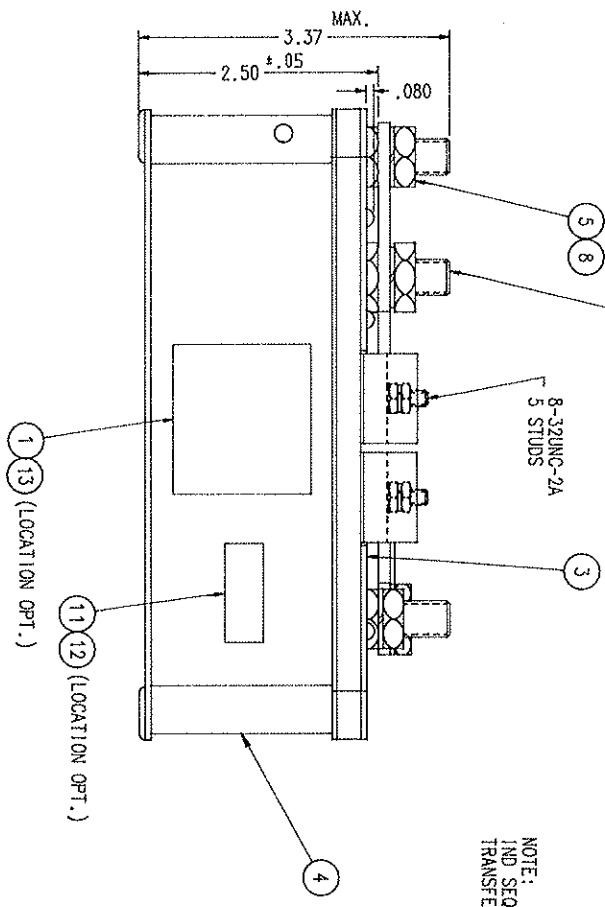
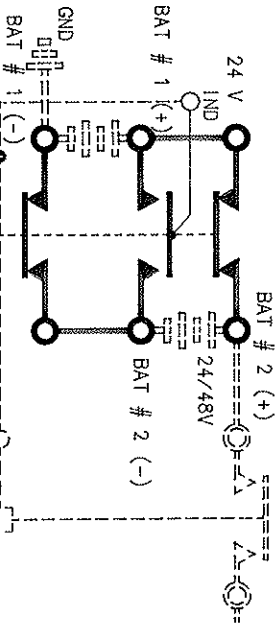


AUXILIARY CONTACTS  
 CONFIGURATION  
 VOLTAGE  
 CURRENT  
 COIL DATA  
 VOLTAGE  
 PICKUP MAX  
 DROPOUT  
 DUTY

ENVIRONMENTAL DATA  
 AMBIENT TEMPERATURE

LIFE ELECTRICAL  
 LIFE MECHANICAL  
 WEIGHT MAX. (EST.)

NOTE:  
 1 AND SEQUENCES KSR TO DROPOUT AFTER KPS  
 AND TRANSFERS BATTERIES BACK TO PARALLEL



| QTY | PART OR IDENTIFYING NO | DESCRIPTION OR IDENTIFYING NO        | ESCAL NO  | DRAWING OR SPECIFICATION | MATERIAL OR NOTE |
|-----|------------------------|--------------------------------------|-----------|--------------------------|------------------|
| 13  | 39529-001              | OVERLAY                              |           |                          |                  |
| 12  | 39529-024              | OVERLAY                              |           |                          |                  |
| 11  | 58400-016              | PLATE-FAA/PMA                        |           |                          |                  |
| 10  | 33111-001              | JUMPER-BUS BAR                       |           |                          |                  |
| 5   | 51808-064              | WASHER-LOOK-NO. 8 SPLIT              | AN93588   |                          | BRONZE           |
| 8   | 51807-084              | WASHER-LOOK-3/8 X .688 X .094 SPLIT  | AN9358616 |                          | BRONZE           |
| 7   | 51200-020              | SCREW-NO. 4 X 1/4 PAN HD. SHEETMETAL |           |                          | S STEEL          |
| 6   | 50408-034              | NUT-8-32 X 5/16 X 3/32 HEX           |           |                          | BRASS            |
| 5   | 50407-164              | NUT-3/8-24 X 5/8 X 7/32 HEX          |           |                          | BRASS            |
| 4   | 33120-010              | CONTACTOR ASSEMBLY-PRIMARY           |           |                          |                  |
| 3   | 33108-001              | PLATE-BASE COVER                     |           |                          |                  |
| 2   | 16704-004              | BAR-BUS                              |           |                          |                  |
| 1   | 16043-001              | PLATE-NAME                           |           |                          |                  |

| FIND NO | QTY | PART OR IDENTIFYING NO | DESCRIPTION OR IDENTIFYING NO | ESCAL NO | DRAWING OR SPECIFICATION | MATERIAL OR NOTE |
|---------|-----|------------------------|-------------------------------|----------|--------------------------|------------------|
| 1       | 1   | 16043-001              | PLATE-NAME                    |          |                          |                  |

| DR BY | RLS      | DATE |
|-------|----------|------|
| RS    | 96/11/06 |      |

| CHK BY | DATE     |
|--------|----------|
| RS     | 96/11/06 |

| ENG | DATE     |
|-----|----------|
| RS  | 96/11/06 |

| MFG | DATE     |
|-----|----------|
| RS  | 96/11/06 |

| RELEASE | DATE     |
|---------|----------|
| RS      | 96/11/06 |

| CONTR. NO. | GOVT APPVAL |
|------------|-------------|
|            |             |

| SIZE | CODE  | IDENT | DWG NO. |
|------|-------|-------|---------|
| C    | 74063 |       | A-848KH |

| SCALE | NONE | SHEET |
|-------|------|-------|
|       |      |       |

UNLESS OTHERWISE SPECIFIED DIMENSIONS ARE IN INCHES TO DIMENSIONS ON 2 PL. DEC. 3 PL. DEC. ANGLES \* .06 \* .010 \* 1"

HARTMAN ELECTRICAL MANUFACTURING  
 MANUSFIELD, OHIO

BATTERY PARALLEL-SERIES  
 CONTACTOR 300 AMP, 24 VDC