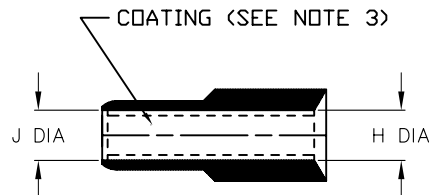
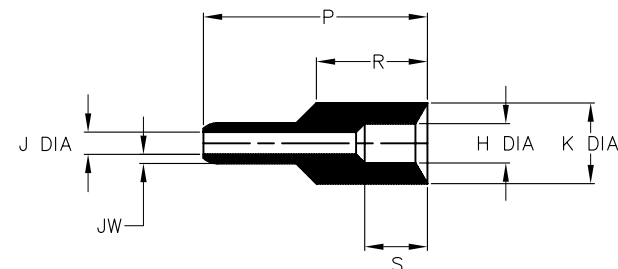


NOTES

- ALL DIMENSIONS ARE IN $\frac{\text{INCHES}}{[\text{MILLIMETERS}]}$
- DIMENSIONS APPEARING IN TABLE ARE AS FOLLOWS:
 - AS SUPPLIED
 - AFTER UNRESTRICTED RECOVERY
- COATING (ADHESIVE) IS OPTIONAL. AS SUPPLIED DIMENSIONS APPEARING IN TABLE ARE FOR UNCOATED PARTS. WHEN COATING IS ADDED, ENTRY DIAMETERS WILL BE REDUCED BY .06 MAX.



AS SUPPLIED



AFTER UNRESTRICTED RECOVERY

TABLE OF DIMENSIONS

| PART NUMBER | H | | J | | K | P | R | S | JW |
|-------------|---------------------|---------------------|---------------------|---------------------|----------------------|-----------------------|----------------------|---------------------|---------------------|
| | MIN | MAX | MIN | MAX | MIN | ±10% | REF | REF | ±20% |
| | a | b | a | b | b | b | b | b | b |
| 202E401 | $\frac{.30}{[7,6]}$ | $\frac{.22}{[5,6]}$ | $\frac{.30}{[7,6]}$ | $\frac{.12}{[3,0]}$ | $\frac{.45}{[11,4]}$ | $\frac{1.25}{[31,7]}$ | $\frac{.62}{[15,7]}$ | $\frac{.35}{[8,9]}$ | $\frac{.05}{[1,3]}$ |

If this document is printed it becomes uncontrolled. Check for the latest revision

CUSTOMER DRAWING

| | | | | | | |
|--|--|------------------|--------------------|---------------------------|---|---------------------|
| UNLESS OTHERWISE SPECIFIED DIMENSIONS ARE INCHES. METRIC DIMENSIONS ARE IN BRACKETS. | | DRAWN UNGUYEN | DATE 07/07/2008 | | Raychem Molded Parts 305 Constitution Dr Menlo Park, CA 94025 | |
| DECIMAL TOLERANCES .XXX ± 0.005 [0.13 mm] .XX ± 0.01 [0.25 mm] .X ± 0.1 [0.50 mm] ANGLE TOLERANCE .X ± 1 DEG. | | RPN | | | TITLE BUS CONNECTOR INSERT | |
| THIRD ANGLE PROJECTION | | | | SIZE B | CODE IDENT. NO. 06090 | DWG. NO. 202E401 |
| © 2008 Tyco Electronics Corporation. All rights reserved. | | | | DO NOT SCALE THIS DRAWING | | SHEET 1 OF 2 |

D

D

| COMPATIBILITY CHART | | | | | |
|---------------------|--|-------------|-------------------|----------------|---------------------|
| MATERIAL DASH NO. | MATERIAL DESCRIPTION | RT SPEC | COATING SLASH NO. | COATING SPEC | COATING DESCRIPTION |
| -3 | POLYOLEFIN, SEMI-RIGID | RT-301 | /42; /86 | S-1017; S-1048 | ADHESIVE |
| -4 | POLYOLEFIN, FLEXIBLE | RT-1304 | /42; /86 | S-1017; S-1048 | ADHESIVE |
| -25 | ELASTOMER, FLUID RESISTANT | RT-1325 | /86 | S-1048 | ADHESIVE |
| -100 | POLYOLEFIN, SEMI-FLEXIBLE ZEROHAL | RT-1323 | /86; /180 | S-1048; S-1030 | ADHESIVE |
| -770 | BM BOOTS FOR SYST. 700, NBC RESISTANT | RT-770 (II) | N/A | | |

C

C

ORDERING INFORMATION

B

B

202E401-X-XX/XX

BASE PART NUMBER

MATERIAL DASH NUMBER
(SEE COMPATIBILITY CHART)

MODIFICATION NUMBER

ADHESIVE SLASH NUMBER
(IF NECESSARY, SEE COMPATIBILITY CHART)

A

A

If this document is printed it becomes uncontrolled. Check for the latest revision

CUSTOMER DRAWING

| | | | |
|---------------------------|-------------------|----------|---------------------|
| SIZE B | DWG. NO. 06090 | REV B | DWG. NO. 202E401 |
| DO NOT SCALE THIS DRAWING | | | SHEET 2 OF 2 |