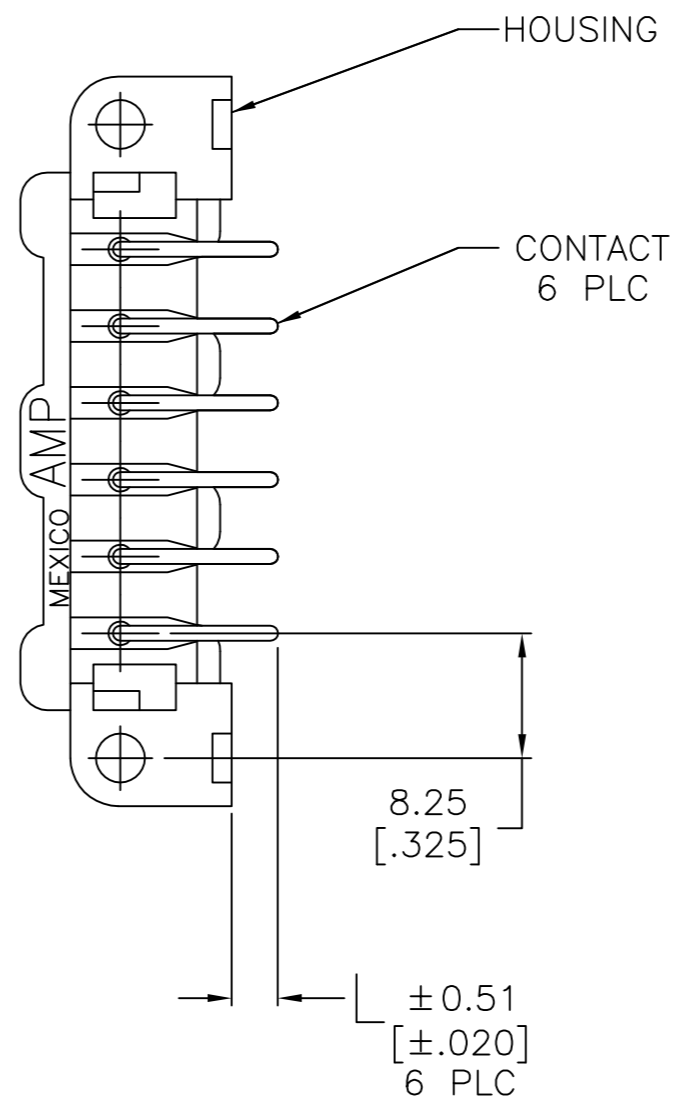
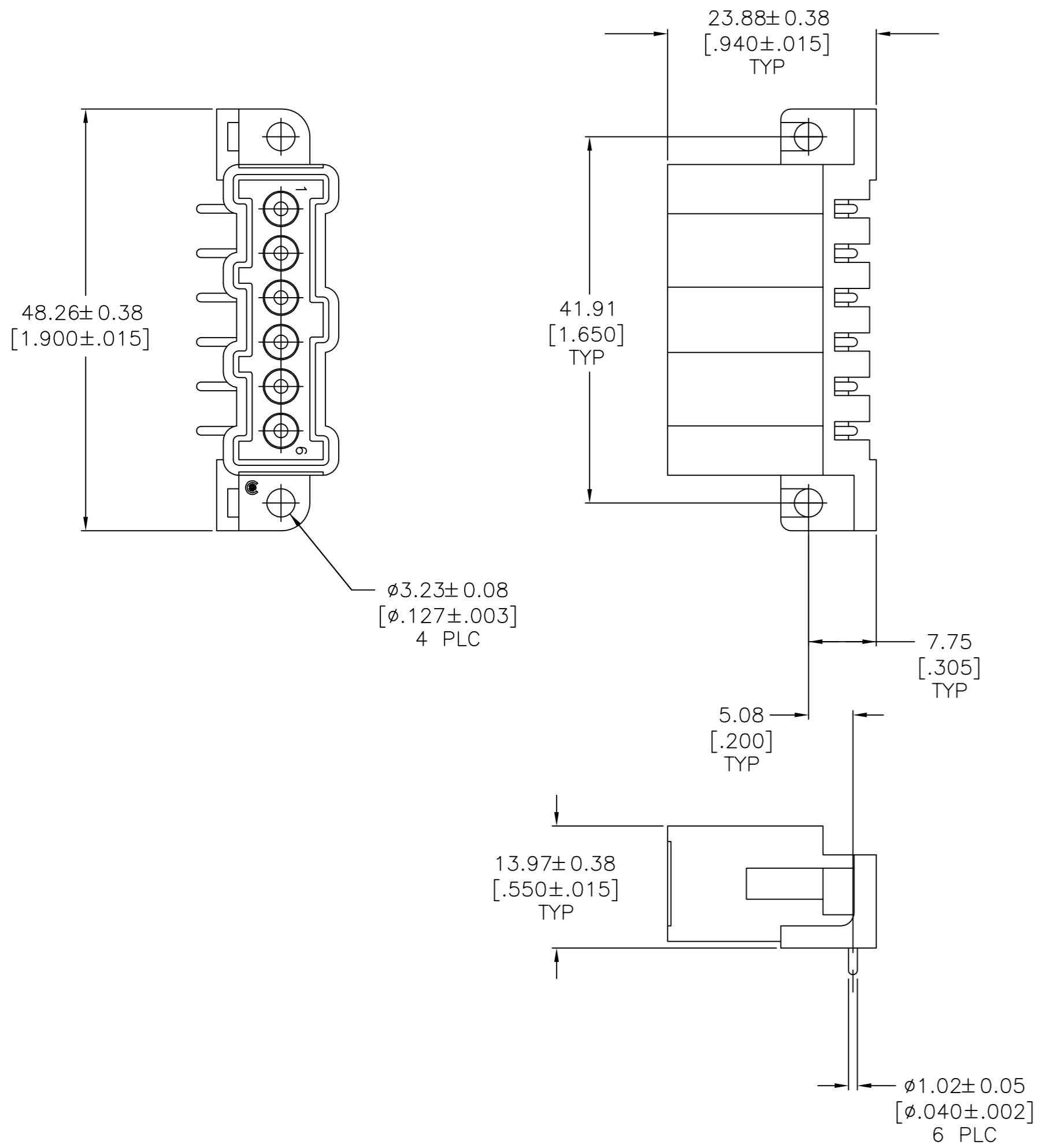


THIS DRAWING IS UNPUBLISHED. RELEASED FOR PUBLICATION  
 © COPYRIGHT - TE Connectivity ALL RIGHTS RESERVED.

REVISIONS					
P	LTR	DESCRIPTION	DATE	DWN	APVD
G		REVISED PER 0G3B-0168-05	3/10/05	SS	GS
G1		REVISED PER ECO-09-021826	12JAN10	KK	AEG
H		REVISED PER ECO-17-011181	03AUG2017	RS	MZ



- ① THERMOPLASTIC, RED.
- ② BRASS PER ASTM B36.
- ③ 3.81µm [.000150] MIN TIN-LEAD OVER 2.54µm [.000100] MIN COPPER.
- ④ 3.81µm [.000150] MIN TIN OVER 2.54µm [.000100] MIN COPPER.
- ⑤ OBSOLETE PARTS: OBSOLETE CIS STREAMLINING PER D.RENAUD/D.SINISI

⑤	OBSOLETE	④	12.83 [.505]	<del>208116-5</del>
		④	3.05 [.120]	208116-4
	OBSOLETE	③	12.83 [.505]	208116-3
		③	3.05 [.120]	208116-1
	CONTACT FINISH		L	PART NUMBER

THIS DRAWING IS A CONTROLLED DOCUMENT.		DWN	J.MCCLINTON	11/06/91		TE Connectivity					
DIMENSIONS:		CHK	R. STONE	11-8-91		NAME					
mm [INCHES]		APVD	-	-		PRODUCT SPEC					
TOLERANCES UNLESS OTHERWISE SPECIFIED:		APPLICATION SPEC				APPLICATION SPEC					
		0 PLC ± - 1 PLC ± - 2 PLC ± 0.25 [.010] 3 PLC ± - 4 PLC ± - ANGLES ± -			SIZE		CAGE CODE		DRAWING NO		RESTRICTED TO
MATERIAL		FINISH			WEIGHT		A2		00779		C=208116
HOUSING: ①		CONTACTS: SEE TABLE			CUSTOMER DRAWING		SCALE		2:1		SHEET
CONTACTS: ②									1 of 1		REV
											H