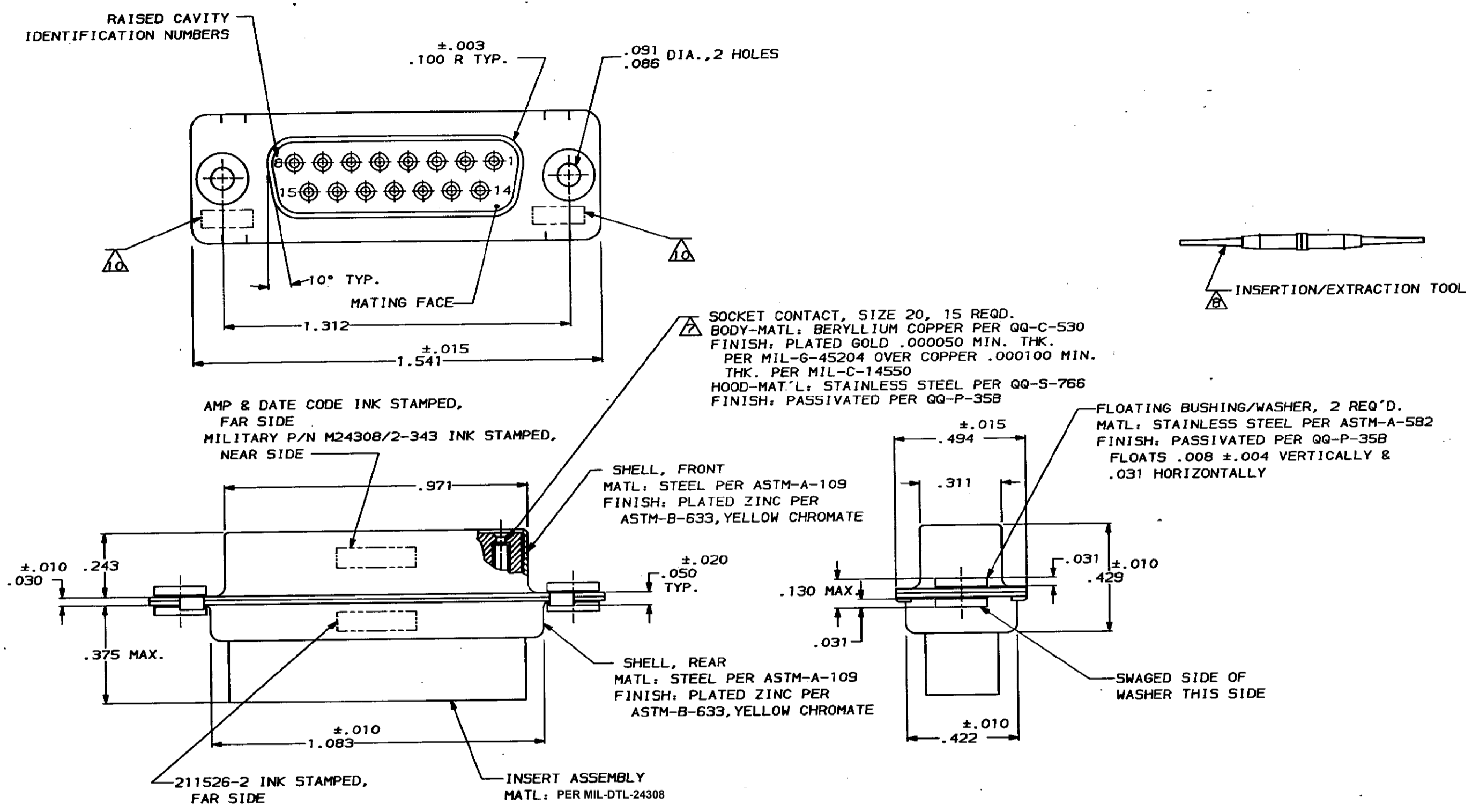


PRG	LOC	DTST	REV	ZONE	LTR	DESCRIPTION	DATE	APPD
5066	DF	DO	0			RELEASED	7/1/85	DE
			A			REV-ECN DF-1034	MC	2-10-88
			B			REV PER ECO-15-005914	KG	28MAY15



1. THIS RECEPTACLE WILL MATE WITH ANY 15 POSN., SIZE 2 PLUG IN AMPLIMITE SERIES.
2. MAXIMUM WIRE INSULATION TO BE USED WITH THIS RECEPTACLE IS $.068$ DIA.
3. SST RETENTION CLIPS ARE INCLUDED IN INSERTS.

- \triangle PACKAGE STAMPED M24308/2-483 & AMP P/N 211526-1
- \triangle PACKAGE STAMPED M24308/2-343 & AMP P/N 211526-2
- \triangle PACKAGE STAMPED M24308/2-354 & AMP P/N 211526-3
- \triangle AMP P/N 205090-1; MIL P/N 63-368, INCLUDED IN KIT.
- \triangle AMP P/N 91067-2; MIL P/N M81969/1-02.
- \triangle CONNECTOR SUPPLIED WITHOUT CONTACTS, SHOWN FOR ILLUSTRATION ONLY.
- \triangle UL/CSA DESIGNATION STAMPED IN THIS AREA.

SAME AS -1 EXCEPT: \triangle \triangle \triangle \triangle	211526-3
SAME AS -1 EXCEPT: \triangle \triangle \triangle	211526-2
AS SHOWN \triangle \triangle \triangle	211526-1

DO NOT SCALE PRINT. UNLESS SPECIFIED DIMENSIONS IN INCHES TOLERANCES ON:		DR 7-1-85 D. ERDMAN		DESCRIPTION
2 PLC DEC \pm	3 PLC DEC $\pm .005$	CHK 9-18-85 R. GRZYBOWSKI	APPD 9-20-85 L. ROP'IER	
ANGLES $\pm 0^\circ 30'$		APPD 9-25-85 G. SACUNAS	PRODUCT SPEC	
SEE CALLOUT		APPLICATION SPEC		RECEPTACLE ASS'Y., AMPLIMITE 15 POSN., SIZE 2, SERIES 109, W/DUAL FLOAT BUSHINGS
SEE CALLOUT		WEIGHT		
SIZE	FSCM NO	DRAWING NO		
D	00779	211526		
SCALE	NTS	SHEET	1 OF 1	