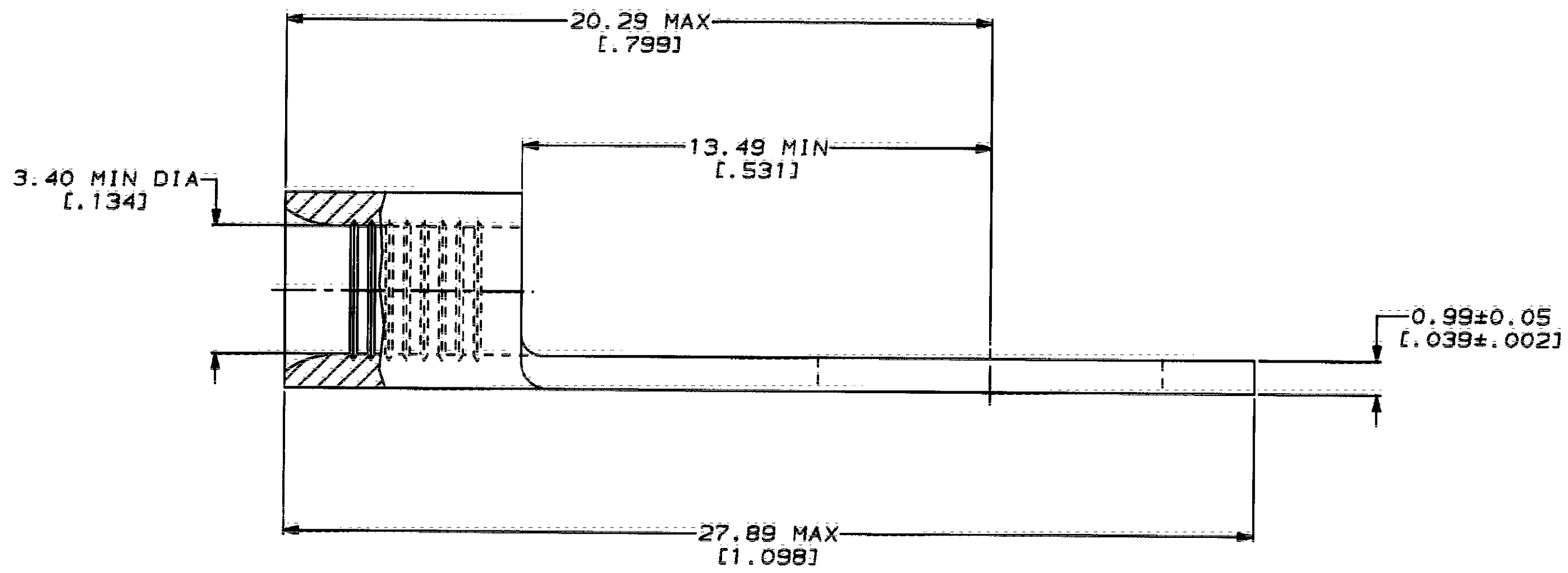
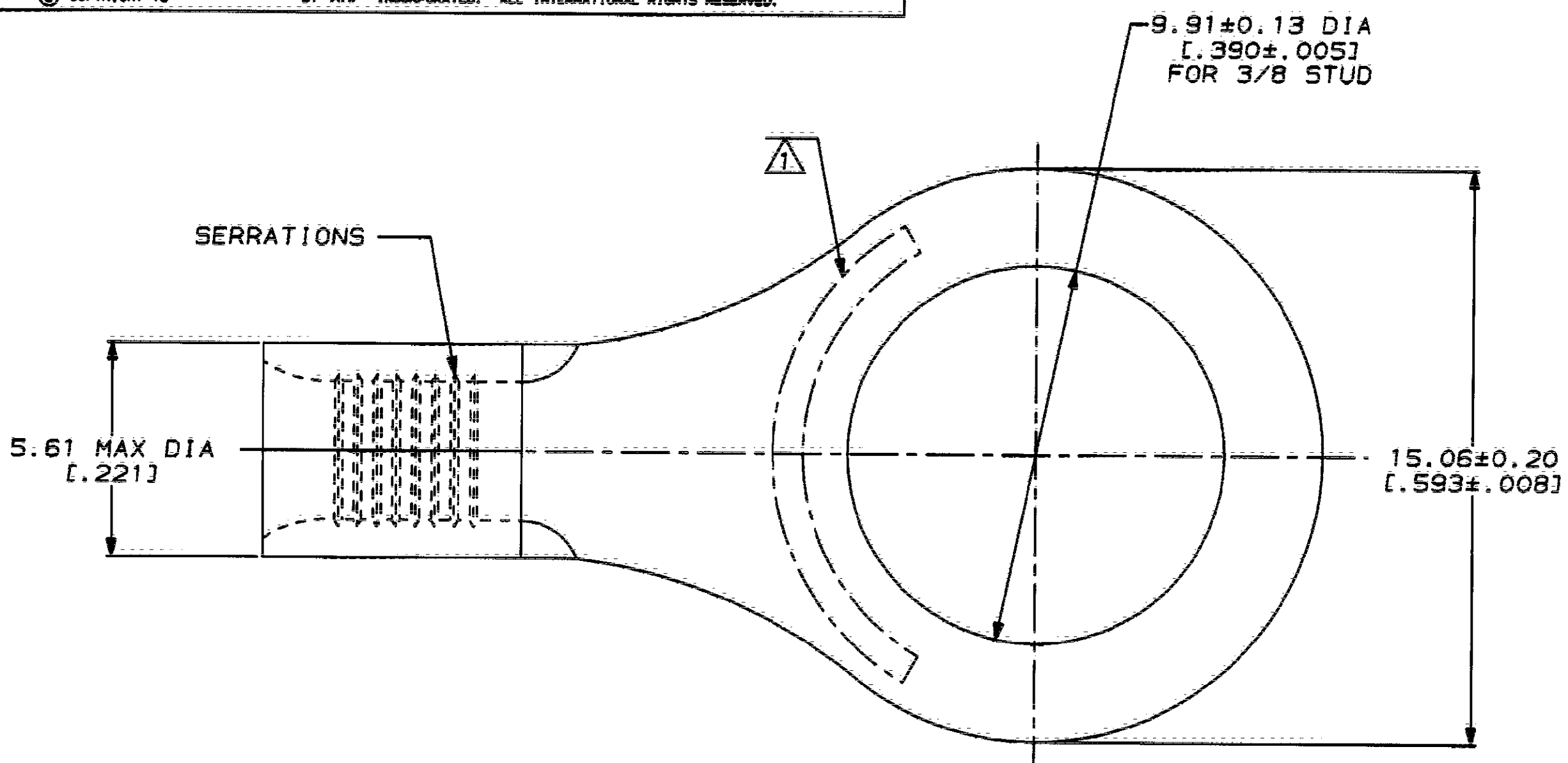


| LOC | DIST | ZONE | LTR | REVISIONS | DATE | APPRO |
|-----|------|------|-----|--------------------------|---------|-------|
| G | 14 | | J | REVISED PER 0720-0230-93 | 2/25/94 | DAP |

METRIC
 DIMENSIONS LISTED IN mm [INCHES]

| | |
|----------------------------|----------------------------|
| AMP WIRE RANGE | UL E13288 Listed |
| 12-10 AWG STRANDED | 12-10 AWG STRANDED |
| LR7189 Certified | MILITARY P/N AND CLASS |
| NOT CERTIFIED | NOT APPLICABLE |

⚠ STAMP AMP 12-10* APPROX AS SHOWN



30972
PART NO

AMP INCORPORATED
CUSTOMER SERVICE SYSTEMS

MAX RECOMMENDED OPERATING TEMPERATURE:
 170°C MAX

DO NOT SCALE PRINT.
 UNLESS SPECIFIED
 DIMENSIONS IN mm [INCHES]
 TOLERANCES ON:
 2 PLC DEC ±
 3 PLC DEC ±
 ANGLES ±

DR 2-9-93
 TA BRINKMAN
 CHK 2-9-93
 DA PATTERSON
 APPD 2-9-93
 DE MILLER
 APPD 2-9-93
 JL HECKLEY
 PRODUCT SPEC

AMP AMP Incorporated
 Harrisburg, PA 17105-3608

FOR ADDITIONAL
 PRODUCT INFORMATION OR
 COPIES OF DRAWINGS
 AND TECHNICAL DOCUMENTS

PRODUCT INFORMATION CENTER
 1-800-522-6752

VOLTAGE RATING:
 NOT APPLICABLE

MATERIAL
 COPPER PER
 ASTM B-152
 ANNEALED

APPLICATION SPEC

NAME
**TERMINAL, RING TONGUE,
 BUDGET**

FOR APPLICATION
 TOOLING INFORMATION

TOOLING ASSISTANCE CENTER
 1-800-722-1111

WIRE CROSS SECTIONAL AREA RANGE:
 2.62-6.64mm² [5,180-13,100] CIR MILS
 STRANDED

FINISH
 TIN PLATE
 0.00254[.000100] MIN
 THK PER MIL-T-10727

WEIGHT

SIZE CAGE CODE DRAWING NO
 C 00779 C-30972
 SCALE 8:1 SHEET 1 OF 1

FOR ORDER ENTRY
 1-800-526-5142

THIS DRAWING IS A CONTROLLED DOCUMENT FOR
 AMP INCORPORATED. IT IS SUBJECT TO CHANGE
 AND THE CONTROLLING ENGINEERING ORGANIZATION
 SHOULD BE CONTACTED FOR THE LATEST REVISION.