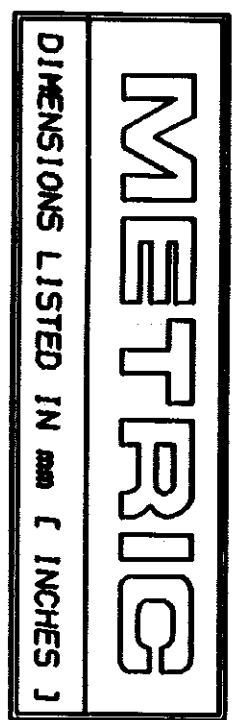
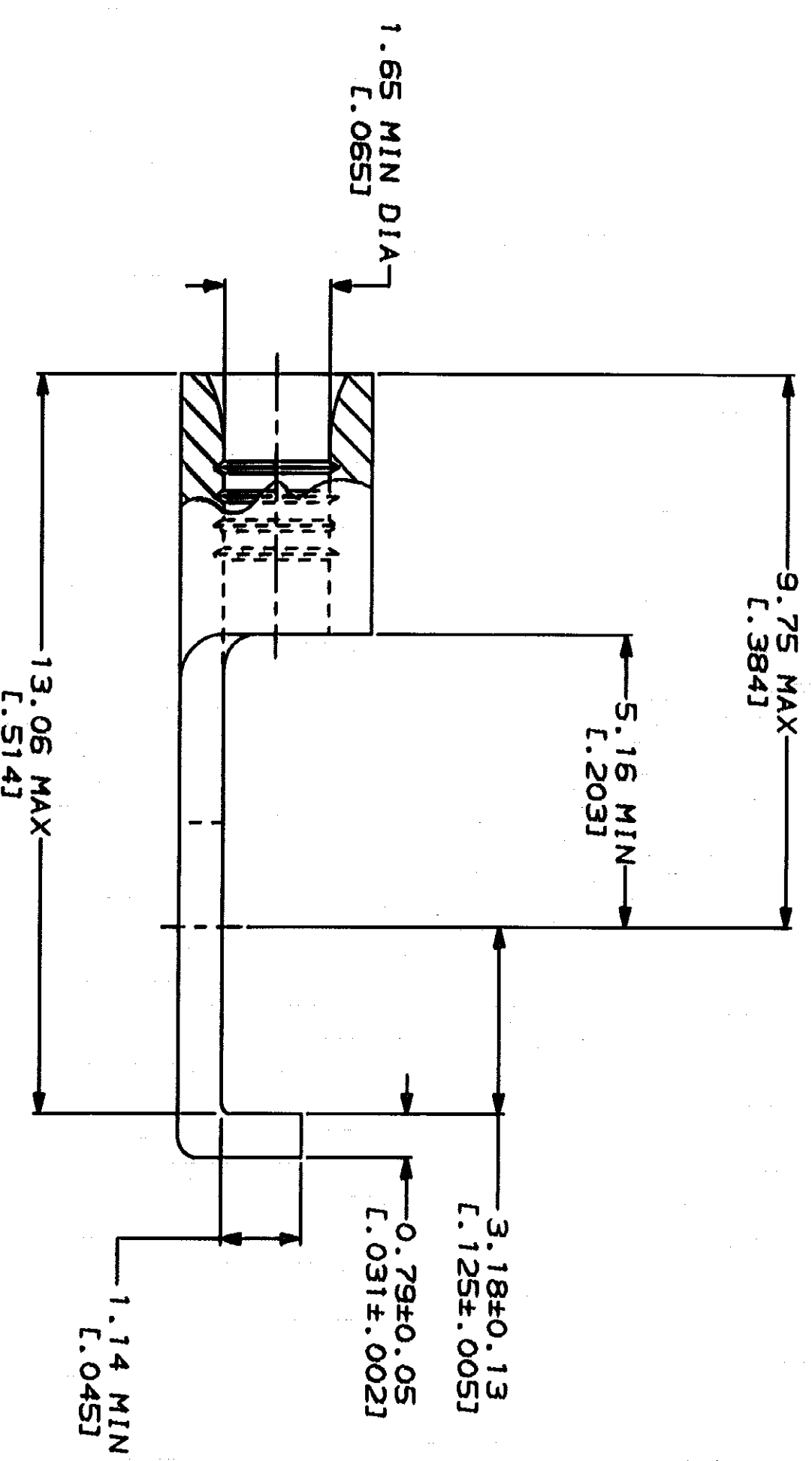
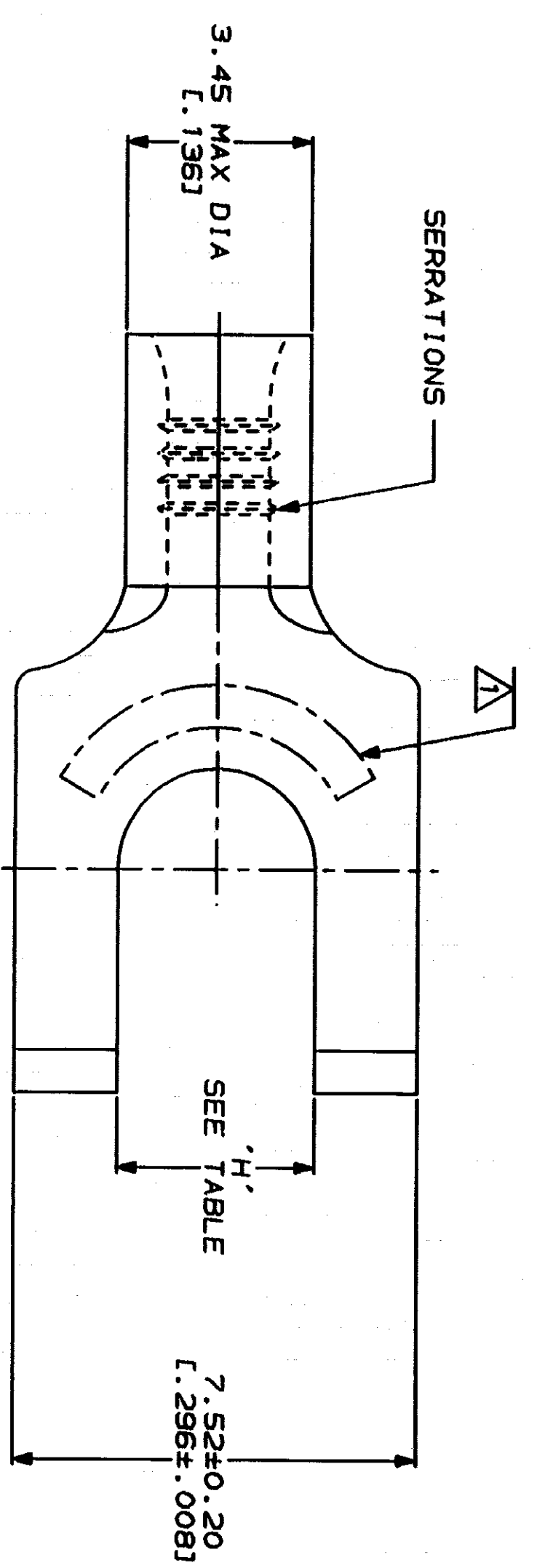


LOG	DIST	ZONE	LTH	DESCRIPTION	DATE	APP
G	14			REVISED PER 0720-0230-93		



AMP WIRE RANGE	UL E13288 Listed
22-16 AWG STRANDED	22-16 AWG STRANDED
LR7189 Certified	MILITARY P/N AND CLASS
NOT CERTIFIED	NOT APPLICABLE

STAMP AMP 22-18* APPROX AS SHOWN
 22-16 TERMINALS ARE STAMPED 22-18 IN
 ACCORDANCE WITH MILITARY SPECIFICATION
 MIL-T-7928, COMMERCIAL WIRE RANGE IS 22-16



QUANTITY	STUD SIZE	H	PACKAGING TYPE	PART NO
5000	8	4.34±0.08 [L.171±.003]	1-32418-2 ON TAPE	1-32418-4
---	8	4.34±0.08 [L.171±.003]	LOOSE PIECE	1-32418-2
---	6	3.68±0.08 [L.145±.003]	LOOSE PIECE	32418

DO NOT SCALE PRINT. UNLESS SPECIFIED DIMENSIONS IN INCHES. TOLERANCES ON: 1 2 PLC DEC ± 3 PLC DEC ± ANGLES MATERIAL FINISH

TERMINAL, FLANGED SPADE, BUDGET

AMP Incorporated Harrisburg, PA 17105-3508

AMP INCORPORATED
 CUSTOMER SERVICE SYSTEMS
 FOR ADDITIONAL PRODUCT INFORMATION OR COPIES OF DRAWINGS AND TECHNICAL DOCUMENTS
 1-800-522-6752
 FOR APPLICATION TOOLING ASSISTANCE CENTER
 1-800-722-1111
 FOR ORDER ENTRY
 1-800-526-5142

MAX RECOMMENDED OPERATING TEMPERATURE: 170°C MAX
 VOLTAGE RATING: NOT APPLICABLE
 WIRE CROSS SECTIONAL AREA RANGE: 0.26-1.65mm² (509-3,260) CIR MILS STRANDED
 FINISH: TIN PLATE
 0.00254L [0.00100] MIN THK PER MIL-T-10727

DR 3-2-93 TA BRINKMAN
 CHK 3-2-93 DA PATTERSON
 APPD 3-2-93 DE MILLER
 APPD 3-2-93 JL NECKLEY
 PRODUCT SPEC
 APPLICATION SPEC
 SCALE 10:1
 CAGE CODE 00779
 DRAWING NO 32418
 SHEET 1 OF 1