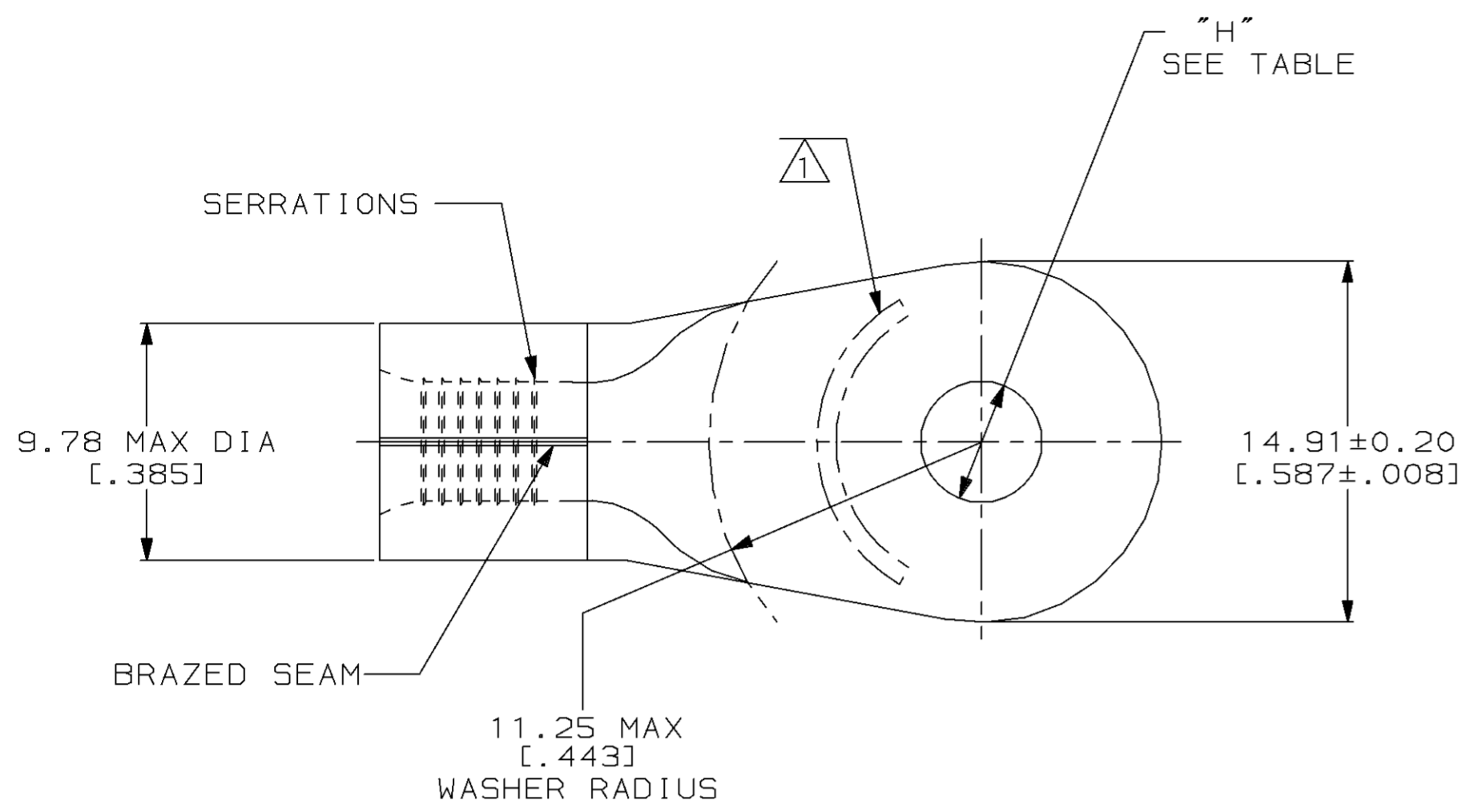


THIS DRAWING IS UNPUBLISHED. RELEASED FOR PUBLICATION, 19 .
 © COPYRIGHT 19 BY AMP INCORPORATED. ALL INTERNATIONAL RIGHTS RESERVED.

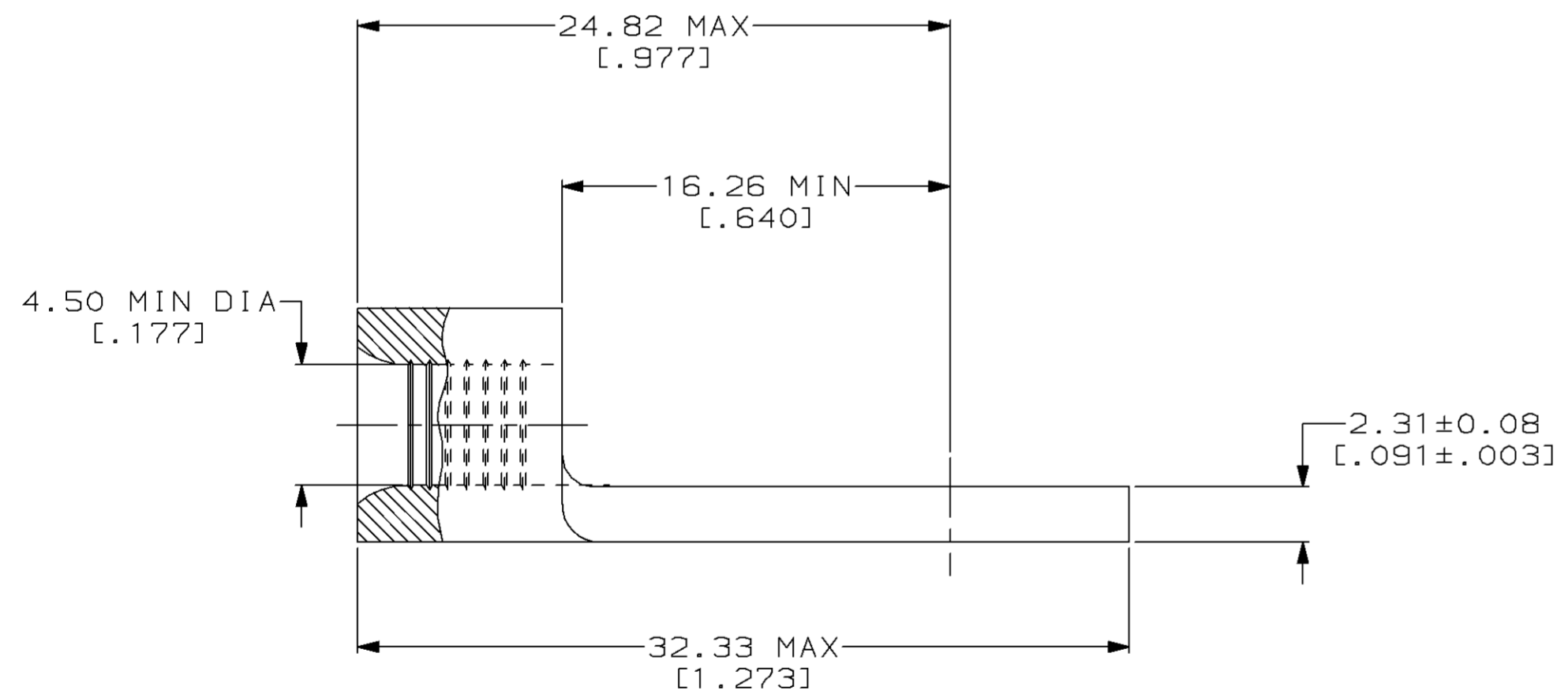
| LOC | | DIST | | REVISIONS | | | | DATE | APPD |
|------|-----|-------------|------|-----------|--------------------------------|---------|---------|------|------|
| ZONE | LTR | DESCRIPTION | DATE | APPD | | | | | |
| G | 14 | P | F | D | REV & REDRAWN PER 0720-0040-93 | 3-22-93 | APP DAP | | |

METRIC
 DIMENSIONS LISTED IN mm [INCHES]



| | |
|-------------------------------|---------------------------|
| AMP WIRE RANGE | UL Listed |
| 8HD AWG SOLID OR STRANDED | 8HD AWG STRANDED |
| SR LR7189 Certified | MILITARY P/N AND CLASS |
| 8HD AWG SOLID OR STRANDED | NOT APPLICABLE |

① STAMP AMP 8HDW* APPROX AS SHOWN



| | | |
|-----------|------------------------------|------------|
| 5/16 | 8.33 ± 0.13 [.328 ± .005] | 1-331414-1 |
| #10 | 5.00 ± 0.08 [.197 ± .003] | 331414 |
| STUD SIZE | "H" DIA | PART NO |

AMP INCORPORATED
CUSTOMER SERVICE SYSTEMS

FOR ADDITIONAL PRODUCT INFORMATION OR COPIES OF DRAWINGS AND TECHNICAL DOCUMENTS
 PRODUCT INFORMATION CENTER
 1-800-522-6752

FOR APPLICATION TOOLING INFORMATION
 TOOLING ASSISTANCE CENTER
 1-800-722-1111

FOR ORDER ENTRY
 1-800-526-5142

MAX RECOMMENDED OPERATING TEMPERATURE:
 170°C MAX

VOLTAGE RATING:
 NOT APPLICABLE

WIRE CROSS SECTIONAL AREA RANGE:
 6.64-10.5MM² [13,100-20,800] CIR MILS
 SOLID OR STRANDED

THIS DRAWING IS A CONTROLLED DOCUMENT FOR AMP INCORPORATED. IT IS SUBJECT TO CHANGE AND THE CONTROLLING ENGINEERING ORGANIZATION SHOULD BE CONTACTED FOR THE LATEST REVISION.

| | |
|---|-----------------------------|
| DO NOT SCALE PRINT. UNLESS SPECIFIED DIMENSIONS IN mm [INCHES] - TOLERANCES ON: | DR 3-22-93 TA BRINKMAN |
| 2 PLC DEC ± - | CHK 3-22-93 DA PATTERSON |
| 3 PLC DEC ± - | APPD 3-22-93 DE MILLER |
| ANGLES ± - | APPD 3-22-93 JL MECKLEY |
| MATERIAL COPPER PER ASTM B-152 ANNEALED | PRODUCT SPEC - |
| FINISH TIN PLATE 0.00254 [0.00100] MIN THK PER MIL-T-10727 | APPLICATION SPEC - |
| | WEIGHT - |

| | | |
|--|--------------------|------------------------|
| AMP AMP Incorporated Harrisburg, PA 17105-3608 | | |
| NAME TERMINAL, RING TONGUE, HEAVY DUTY, SOLISTRAND™ | | |
| SIZE ③ | CAGE CODE 00779 | DRAWING NO ③=331414 |
| SCALE 4:1 | | SHEET 1 OF 1 |