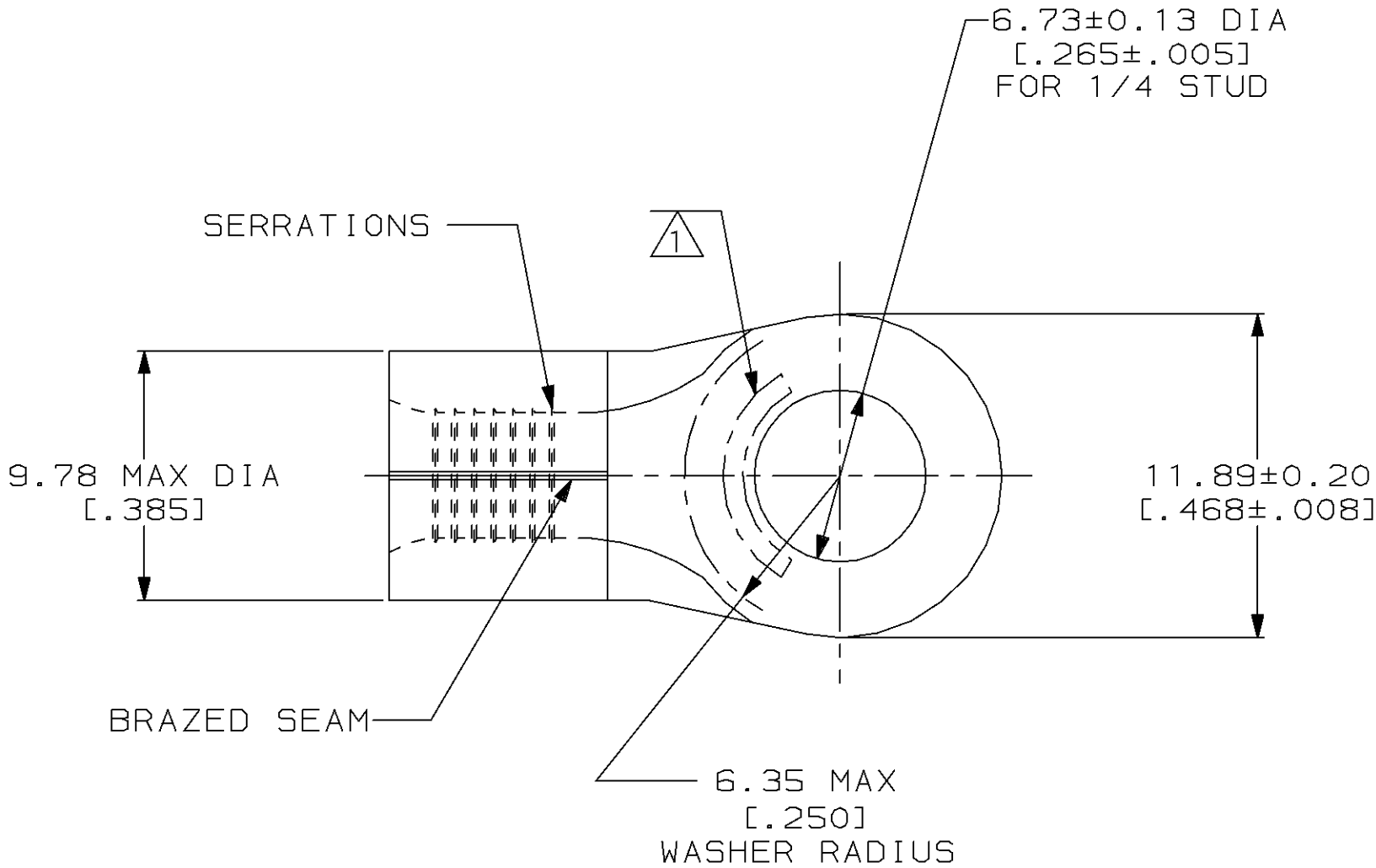


				1						
LOC	DIST	P	F	REVISIONS						
G	14			ZONE	LTR	DESCRIPTION			DATE	APPD
					C	REV & REDRAWN PER 0720-0040-93			3-22-93	1AP DAP

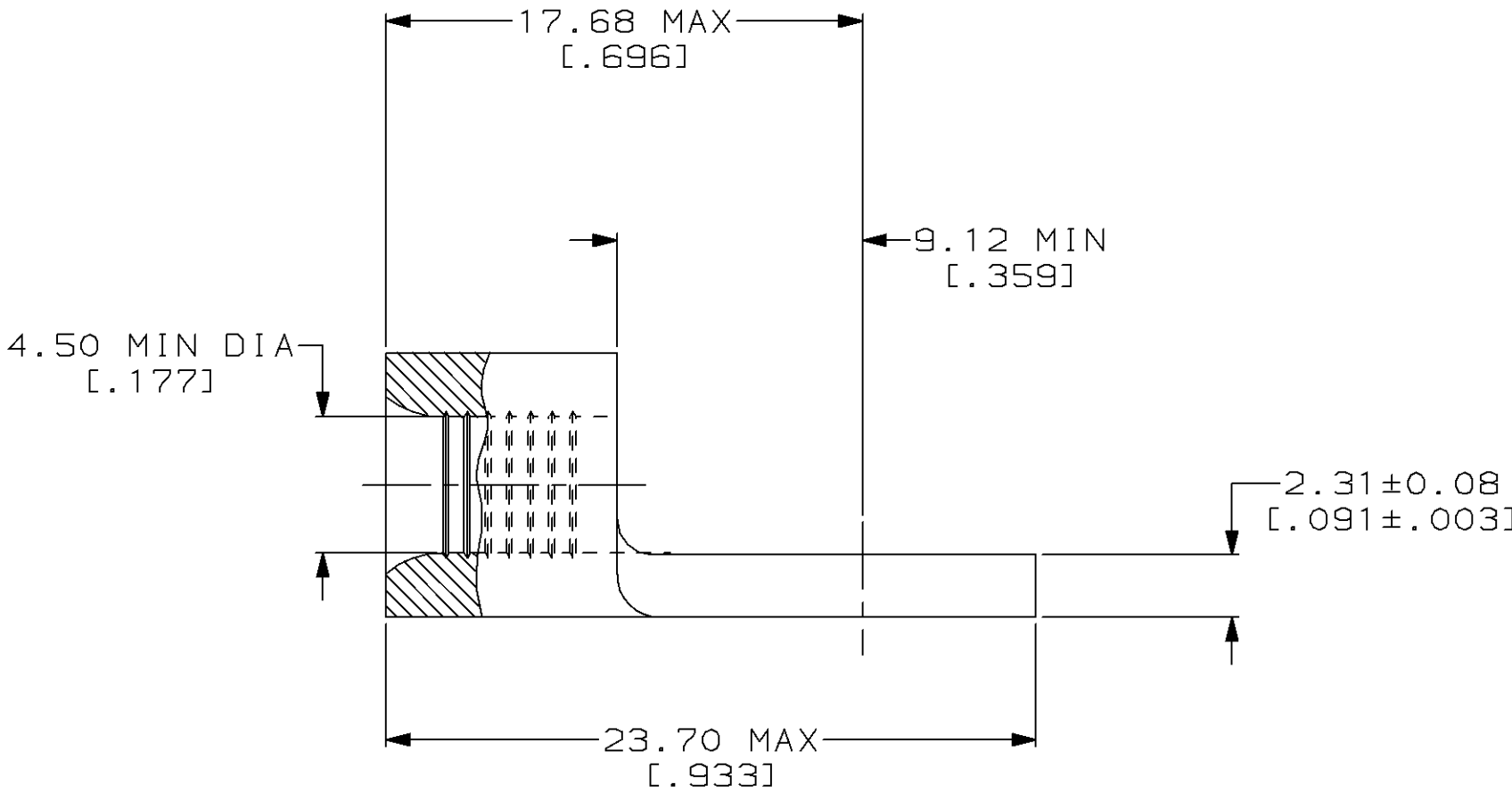


METRIC

DIMENSIONS LISTED IN mm [INCHES]

AMP WIRE RANGE	UL Listed
8HD AWG SOLID OR STRANDED	8HD AWG STRANDED
LR7189 Certified	MILITARY P/N AND CLASS
8HD AWG SOLID OR STRANDED	NOT APPLICABLE

1 STAMP AMP 8HDW* APPROX AS SHOWN



AMP INCORPORATED CUSTOMER SERVICE SYSTEMS			MAX RECOMMENDED OPERATING TEMPERATURE: 170°C MAX		DO NOT SCALE PRINT. UNLESS SPECIFIED DIMENSIONS IN mm [INCHES] TOLERANCES ON: 2 PLC DEC ± - 3 PLC DEC ± - ANGLES ± -		DR 3-22-93 TA BRINKMAN		332042		
FOR ADDITIONAL PRODUCT INFORMATION OR COPIES OF DRAWINGS AND TECHNICAL DOCUMENTS			VOLTAGE RATING: NOT APPLICABLE		MATERIAL COPPER PER ASTM B-152 ANNEALED		CHK 3-22-93 DA PATTERSON		PART NO		
FOR APPLICATION TOOLING INFORMATION			WIRE CROSS SECTIONAL AREA RANGE: 6.64-10.5MM² [13,100-20,800] CIR MILS SOLID OR STRANDED		FINISH TIN PLATE 0.00254[.000100] MIN THK PER MIL-T-10727		APPD 3-22-93 DE MILLER		NAME		
FOR ORDER ENTRY			THIS DRAWING IS A CONTROLLED DOCUMENT FOR AMP INCORPORATED. IT IS SUBJECT TO CHANGE AND THE CONTROLLING ENGINEERING ORGANIZATION SHOULD BE CONTACTED FOR THE LATEST REVISION.				APPD 3-22-93 JL MECKLEY		TERMINAL, RING TONGUE, HEAVY DUTY, SOLISTRAND™		
							PRODUCT SPEC -		SIZE	CAGE CODE	DRAWING NO
							APPLICATION SPEC -		③	00779	③=332042
							WEIGHT -		SCALE	4:1	SHEET 1 OF 1