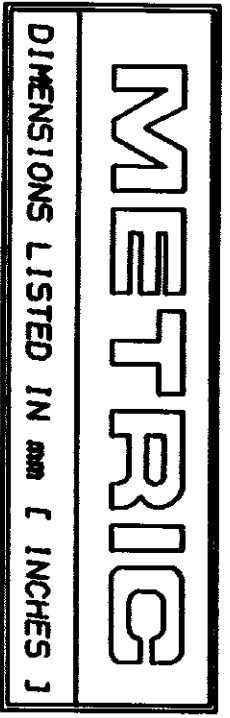
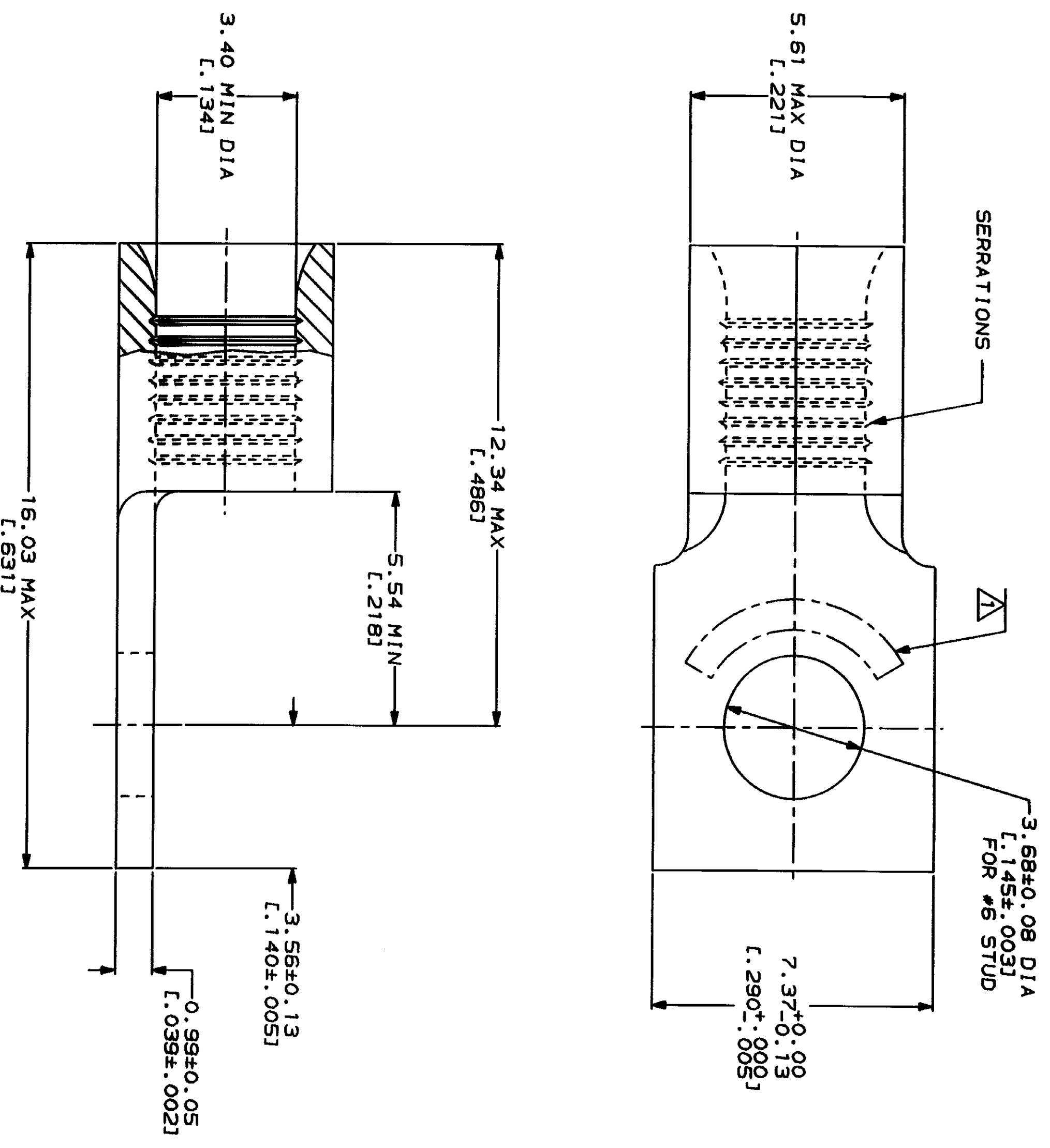


LOC	DIST	ZONE	LTN	DESCRIPTION	DATE	APPD
G	14		D	REVISED PER 0720-0230-93	2/25/93	AMP



WIRE RANGE	E13288 Listed
12-10 AWG STRANDED	12-10 AWG STRANDED
LR7189 Certified NOT CERTIFIED	MILITARY P/N AND CLASS NOT APPLICABLE

△ STAMP AMP 12-10* APPROX AS SHOWN



AMP INCORPORATED
 CUSTOMER SERVICE SYSTEMS

MAX RECOMMENDED OPERATING TEMPERATURE: 170°C MAX

DO NOT SCALE PRINT. UNLESS SPECIFIED DIMENSIONS IN MILLIMETERS - TOLERANCES ON: 1. 2 PLG DEC ± .005 3 PLG DEC ± .005 ANGLES ± .5°

DR 1-29-93 TA BRINKMAN
 CHK 1-29-93 DA PATTERSON
 APPD 1-29-93 DE MILLER
 APPD 1-29-93 JL NECKLEY

AMP Incorporated
 Harrisburg, PA 17125-3608

FOR ADDITIONAL PRODUCT INFORMATION OR COPIES OF DRAWINGS AND TECHNICAL DOCUMENTS

PRODUCT INFORMATION CENTER
 1-800-522-6752

VOLTAGE RATING: NOT APPLICABLE

FINISH: TIN PLATE
 0.0025± [L.000100] MIN THK PER MIL-T-10727

TERMINAL, RECTANGULAR TONGUE, BUDGET

FOR APPLICATION TOOLING INFORMATION

TOOLING ASSISTANCE CENTER
 1-800-722-1111

WIRE CROSS SECTIONAL AREA RANGE: 2.62-6.64mm² [5,180-13,100] CIR MILS STRANDED

APPLICATION SPEC

SIZE: G
 CAGE CODE: 00779
 DRAWING NO: 33426

FOR ORDER ENTRY

1-800-526-5142

THIS DRAWING IS A CONTROLLED DOCUMENT FOR AMP INCORPORATED. IT IS SUBJECT TO CHANGE WITHOUT NOTICE. CONTACT YOUR LOCAL SALES OFFICE FOR THE LATEST REVISION.

WEIGHT

SCALE 10:1