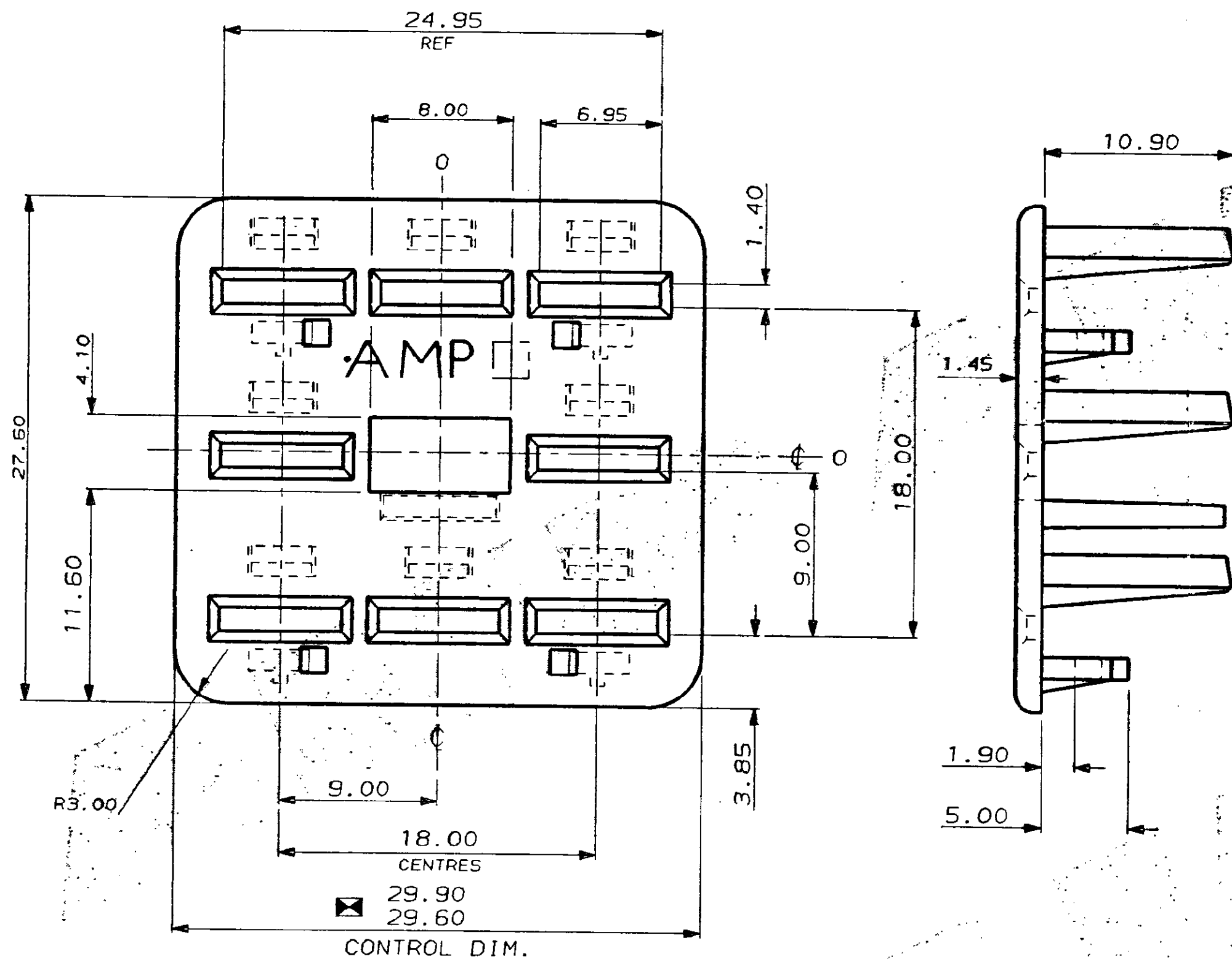


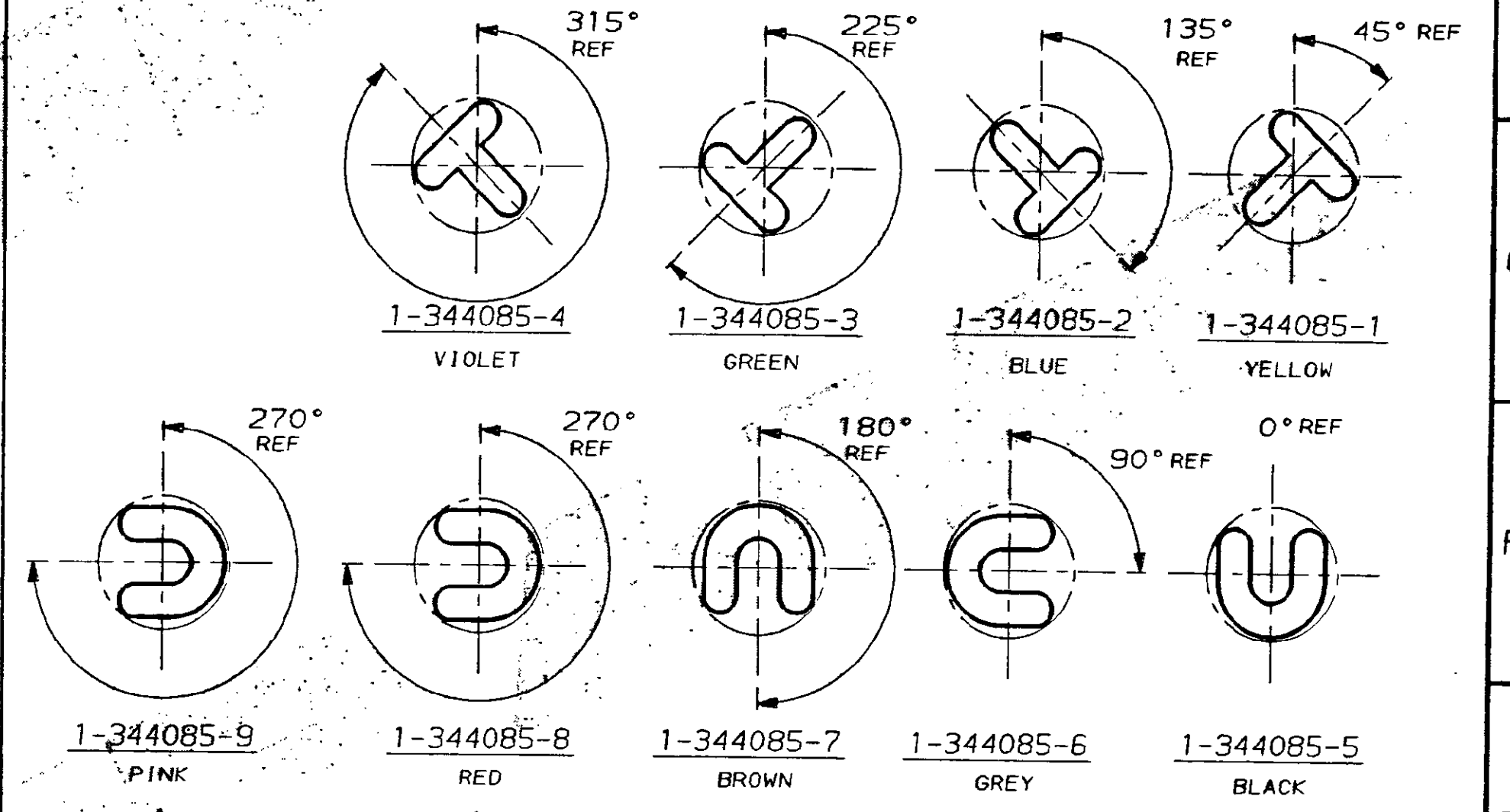
C.A.D. FILE CODE  
S.C344085.D

DO NOT SCALE

DIMENSIONS IN MM.



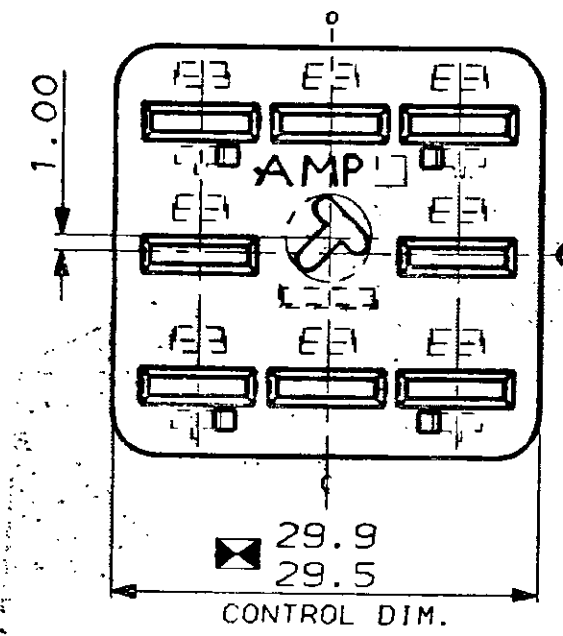
344085-1



SAME POLARISATION BUT  
DIFFERENT INHIBITIONS  
(SEE "INHIB. VIEWS.")

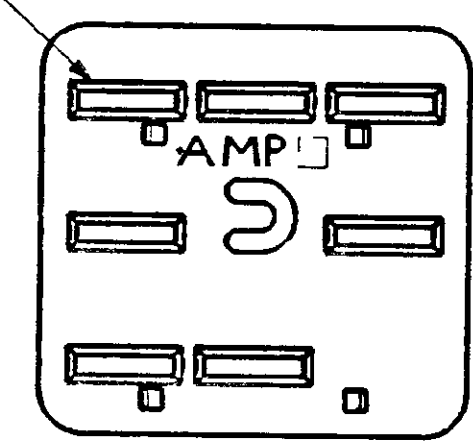
VARIOUS POLARISATIONS FOR  
1-344085-1 TO 1-344085-9 ONLY.

FOR REFERENCE ONLY  
WILL NOT BE UP-DATED



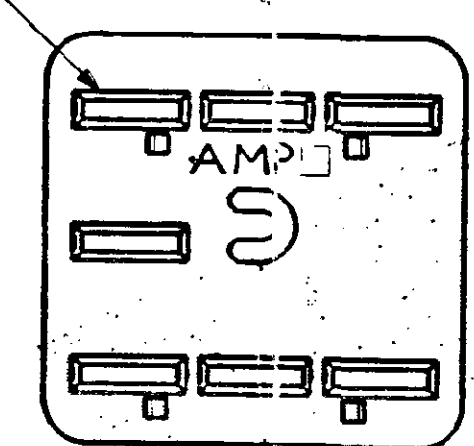
1-344085-1  
(SHOWS A TYPICAL POLARISED A/BACKOUT)

7 SLOTS (AS SHOWN)



1-344085-9 (PINK)  
INHIB. VIEW

7 SLOTS (AS SHOWN)



1-344085-8 (RED)  
INHIB. VIEW

FOR REFERENCE ONLY  
WILL NOT BE UP-DATED

|          | FINISH           | MATERIAL  | PART NUMBER |
|----------|------------------|-----------|-------------|
| OBSOLETE | PINK (RAL TBA)   | NYLON 6.6 | 1-344085-9  |
| OBSOLETE | RED (RAL3000)    | NYLON 6.6 | 1-344085-8  |
| OBSOLETE | BROWN (RAL8011)  | NYLON 6.6 | 1-344085-7  |
| OBSOLETE | GREY (RAL TBA)   | NYLON 6.6 | 1-344085-6  |
| OBSOLETE | BLACK (RAL9004)  | NYLON 6.6 | 1-344085-5  |
| OBSOLETE | VIOLET (RAL4005) | NYLON 6.6 | 1-344085-4  |
| OBSOLETE | GREEN (RAL6001)  | NYLON 6.6 | 1-344085-3  |
| OBSOLETE | BLUE (RAL5015)   | NYLON 6.6 | 1-344085-2  |
| OBSOLETE | YELLOW (RAL1018) | NYLON 6.6 | 1-344085-1  |
|          | WHITE (RAL9002)  | NYLON 6.6 | 344085-1    |

| CUSTOMER DWG FOR REFERENCE ONLY |                |               |           | TOLERANCES UNLESS OTHERWISE STATED |             | DR. R.J.S.   |                 |
|---------------------------------|----------------|---------------|-----------|------------------------------------|-------------|--|-----------------|
| D1                              | UPDATED        | ECR-15-002885 | 11MAR2015 | DEC ± 0.5                          | ANGLES ± 1° | CH. D.B.K.-M.  | APP. B.J.       |
| D                               | UPDATED        | EB00-0277-93  | 21.7.93   |                                    |             | 12.6.87  |                 |
| C                               | ADDED CON.DIM. | C5375         | 26.9.88   |                                    |             | AMP of Great Britain Ltd.                              |                 |
| B                               | REVISED        | C5331         | 4/9/89    |                                    |             | TERMINAL HOUSE STANMORE MIDDX.                         |                 |
| A                               | UPDATED        | C4956         | 14.7.88   |                                    |             | A/BACKOUT FOR 8 WAY REC. HSG. ECONOSEAL 3 HIGH CURRENT |                 |
| O                               | REL. FOR PROD. | C4891         | 9.3.88    | SCALE 4/1                          | LOC E       | SIZE A2  | DWG.No. C344085 |
| REV                             | MODIFICATION   | ECN           | DATE      | REV D1                             | SHEET 1/1   |  |                 |