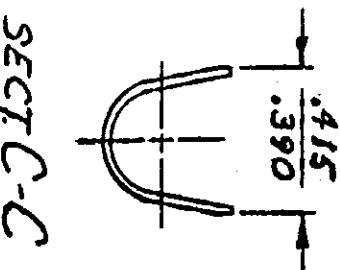
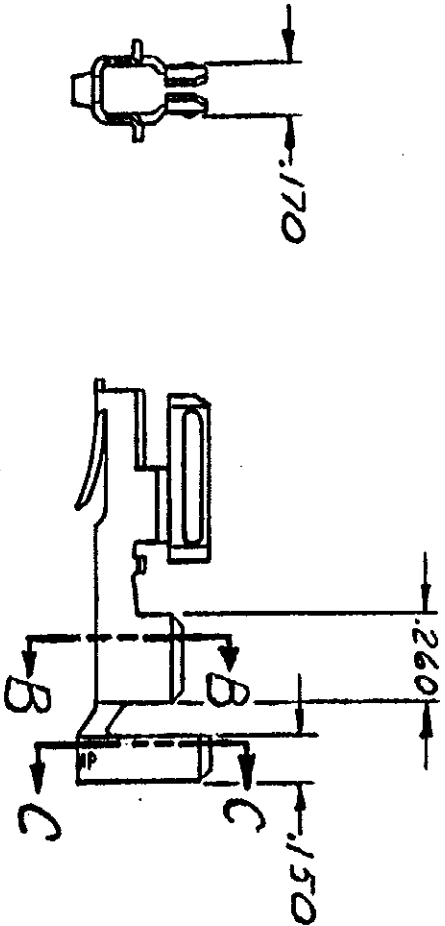
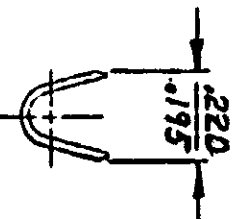
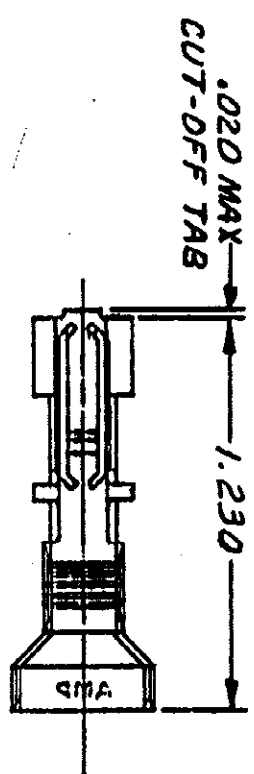


DRAWING MADE IN THIRD ANGLE PROJECTION

© COPYRIGHT 1977 BY AMP INCORPORATED, HARRISBURG, PA.
 ALL INTERNATIONAL RIGHTS RESERVED. AMP INCORPORATED PRODUCTS
 COVERED BY U. S. AND FOREIGN PATENTS AND/OR PATENTS PENDING.

REVISIONS				1	Loc S	DIST 64
P	F	ZONE	LTR	DESCRIPTION	DATE	APPROVED
✓		0		REL. DWG: M-4121	2-11-77	M.F.
✓		A		REVISED PER M-4428	2-25-77	Q.Q./B.H.
✓		A1		RESTORATION	4-25-77	K.J.J.
✓		B		OBSOLETE - 2 & SHEET 2 CM-473	3-4-86	K.S./R.S.
✓		C		WAS LOC CM, REVISED	8-18-87	M.H.



UNLESS OTHERWISE SPECIFIED DIMENSIONS ARE IN INCHES. TOLERANCES ON: ANGLES ± .015		CONTRACT NO. DR 279 2-11-77		NAME	
MATERIAL PHOS BRZ		CHK <i>B. S. [Signature]</i> 3/14/77		TERMINAL, HIGH CURRENT, HERMAPHRODITIC, LOOSE PIECE	
FINISH TIN		APPD <i>[Signature]</i> 3/15/77		INSULATION DIA MAX	
OTHER APPD		DSGN APPD		WIRE RANGE	
				12-8	
				PART NO	
				350821-1	
		AMP INCORPORATED Harrisburg, Pa.		DRAWING NO	
				350821	
		SCALE		SHEET 1 OF 1	
		SIZE		DRAWING NO	
		B		00779	

CUSTOMER DRAWING

AMP 1473-18 (7-73)