

THIS DRAWING IS UNPUBLISHED. RELEASED FOR PUBLICATION
 © COPYRIGHT - BY TYCO ELECTRONICS CORPORATION. ALL RIGHTS RESERVED.

LOC	DIST	REVISIONS			
P	LTR	DESCRIPTION	DATE	DWN	APVD
		REVISED PER ECO-06-018765	13APR07	DH	DB

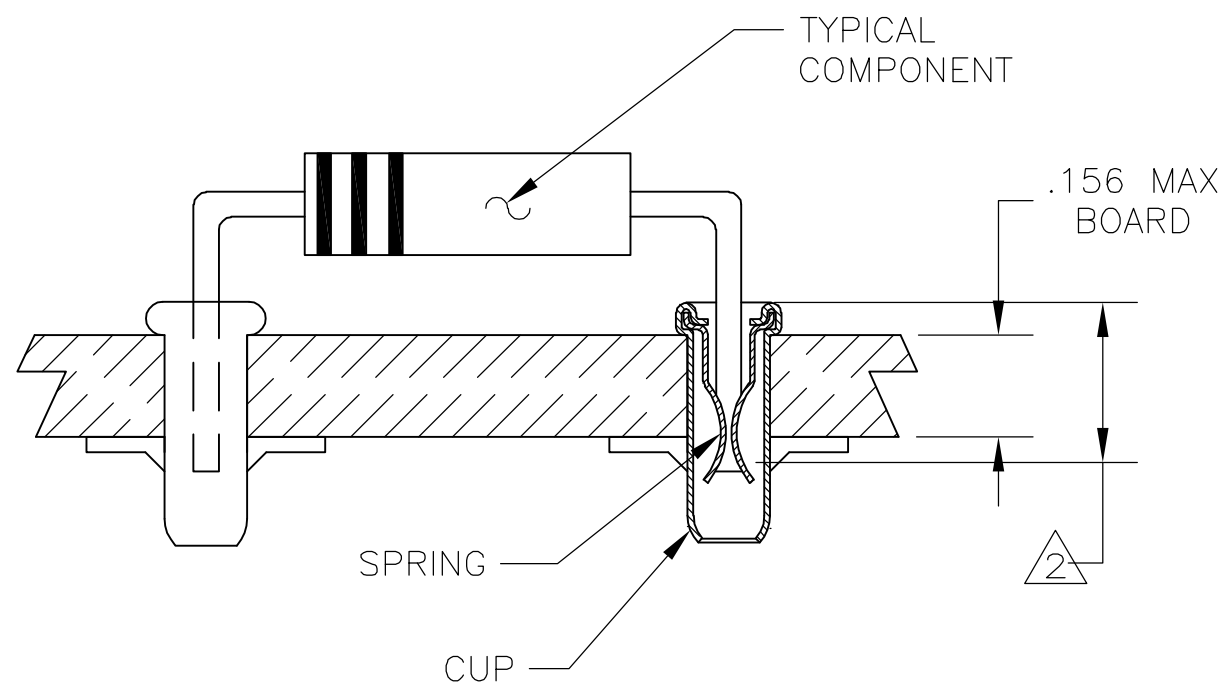
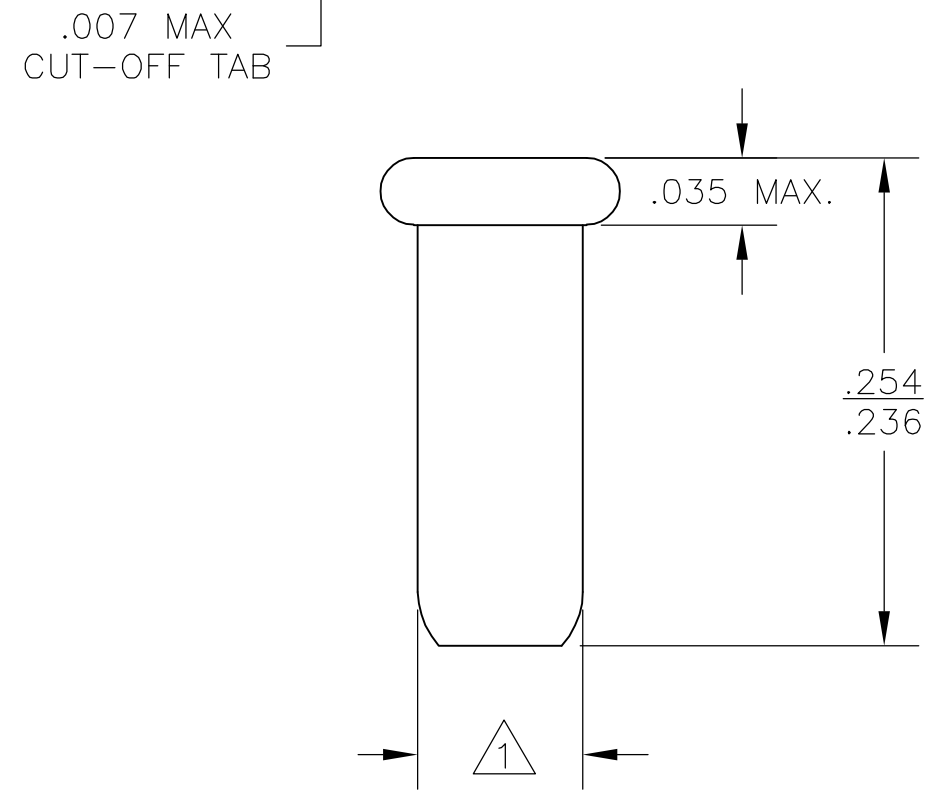
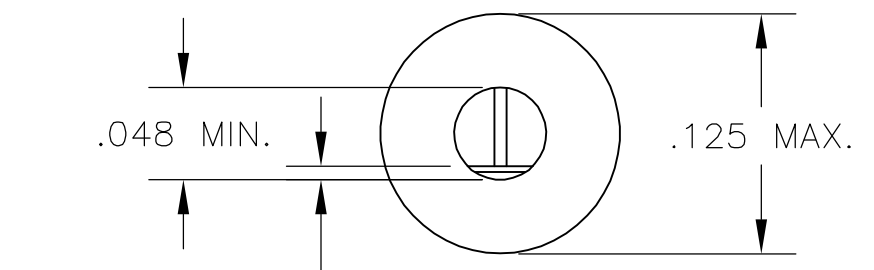
1 PART FITS IN TO A #43 DRILLED HOLE (.089±.0015) FOR HAND INSERTION, AND A #44 DRILLED HOLE (.086±.0015) FOR MACHINE INSERTION.

2 .145 MIN INSERTION DEPTH REQUIRED FOR A RELIABLE CONNECTION.

3. SPRING IS SECURED IN CUP WITH NO SPRING ROTATION PERMISSABLE.

4. LEAD RANGES & PERFORMANCE RESULTS:

LEAD RANGES (DIA)	.018-.020	.025-.032	.035-.040
MAX INSERTION FORCE	17 OZ	37 OZ	48 OZ
MIN EXTRACTION FORCE	1.0 OZ	1.5 OZ	2.0 OZ
MILLVOLT DROP (MAX)	2.00 mV	1.75 mV	1.50 mV



OBSOLETE	TIN-LEAD	PRE-TIN	380635-5
SUPSD BY 380635-2	TIN-LEAD	.000050 MIN Au OVER .000050 MIN NICKEL	380635-4
OBSOLETE	.000050 MIN Au OVER .000050 MIN NICKEL	.000050 MIN NICKEL	380635-3
OBSOLETE	TIN-LEAD	.000030 MIN Au OVER .000030 MIN NICKEL	380635-2
	.000030 MIN Au OVER .000030 MIN NICKEL	.000030 MIN NICKEL	380635-1
	CUP	SPRING	PART NO.
FINISH			

DIMENSIONS: INCHES		TOLERANCES UNLESS OTHERWISE SPECIFIED:		MATERIAL		FINISH	
0 PLC	± -	1 PLC	± -	CUP - COPPER	SEE TABLE	DWN	07FEB2007
1 PLC	± -	2 PLC	± -	SPRING - Be-Cu		CHK	J.HAVENER
2 PLC	± -	3 PLC	± -			APVD	J.HAVENER
3 PLC	± -	4 PLC	± -			NAME	J.HAVENER
4 PLC	± -	ANGLES	± -			PRODUCT SPEC	
						APPLICATION SPEC	
						WEIGHT	-
						SIZE	A3
						CAGE CODE	00779
						DRAWING NO	C-380635
						RESTRICTED TO	-
						CUSTOMER DRAWING	
						SCALE	NTS
						SHEET	1 OF 1
						REV	W2