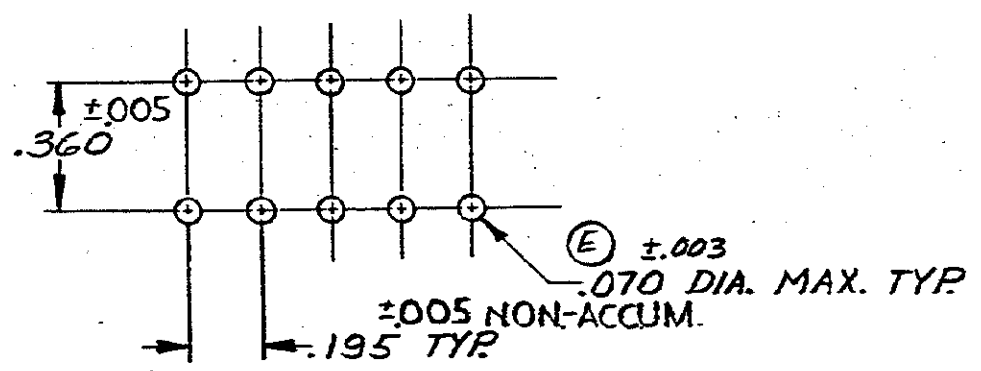
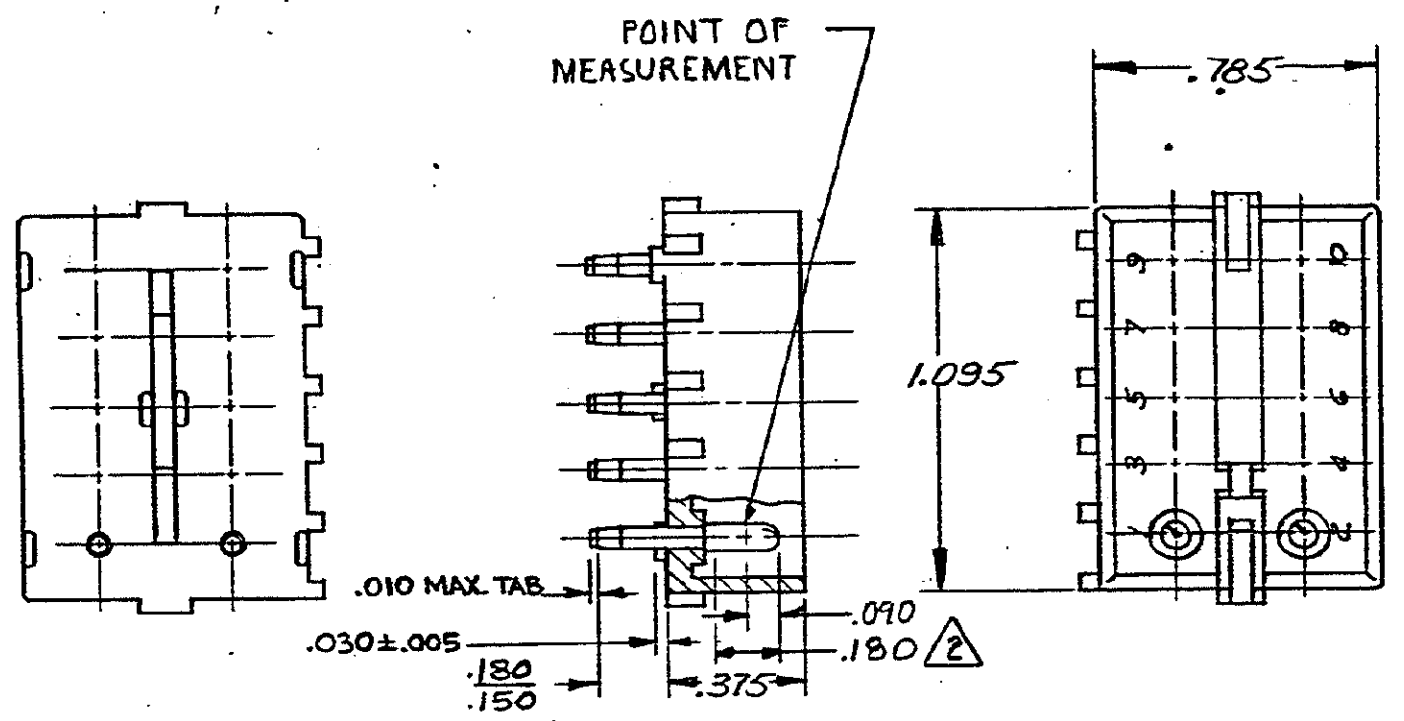


2

S



RECOMMENDED LAYOUT FOR
.062 P.C. BOARD

1. PARTS COMPLY WITH TE SOLDERABILITY SPEC. NO. 109-11-3.
2. CONTACT IS PLATED OVERALL WITH .000050 NICKEL, THEN .000030 GOLD OVER CONTACT LENGTH INDICATED AND TIN PLATED ON SOLDER TAIL END.

ASSEMBLY NO.	HSG. MATL & COLOR	PIN MATL & FINISH
2-380991-0	NYLON - NATURAL	COPPER ALLOY - GOLD / 2
1-380991-0	NYLON - NATURAL	COPPER ALLOY - PRE-TIN

DIMENSIONS IN INCHES. DO NOT SCALE PRINT.

REVISION RECORD		DR	CHK	DATE
T2	REVISED PER ECR-13-008342	AV	RP	12NOV13
T1	REVISED PER ECO-11-005294	RK	HMR	08APR11
LTR	REVISION RECORD	DR	CHK	DATE

NUMBER	REQUIRED PER ASSEMBLY	DESCRIPTION
166091		

DR G. Edman 6-12-73	MATERIAL AND FINISH SEE-TABLE	TE Connectivity	
CHK E. Cramer 6-13-73	WIRE - RANGE - INSULATION # - # - #	CLASS #	TYPE #
APP M. P. [Signature]	TOLERANCE EXCEPT AS NOTED ±.015 ±.001	SCALE #	LOC CM B
	NAME 10 CIRCUIT MATE-N-LOK P.C. BOARD PIN HEADER	NO 380991	REV T2

